

General Area Statistics for Cameron County

Population ¹	392,736
Average annual wage ²	\$25,309
Number in labor force ³	150,356
Number employed ³	134,689
Percent unemployed ³	10.4%
Median household income ⁴	\$29,347
Median housing value ⁴	\$74,300
Median gross rent ⁴	\$492
Per Capita Income ⁴	\$13,007
Poverty rate ⁴	30%
High school graduates ⁴	61.7%
Bachelor's degree or higher ⁴	15%

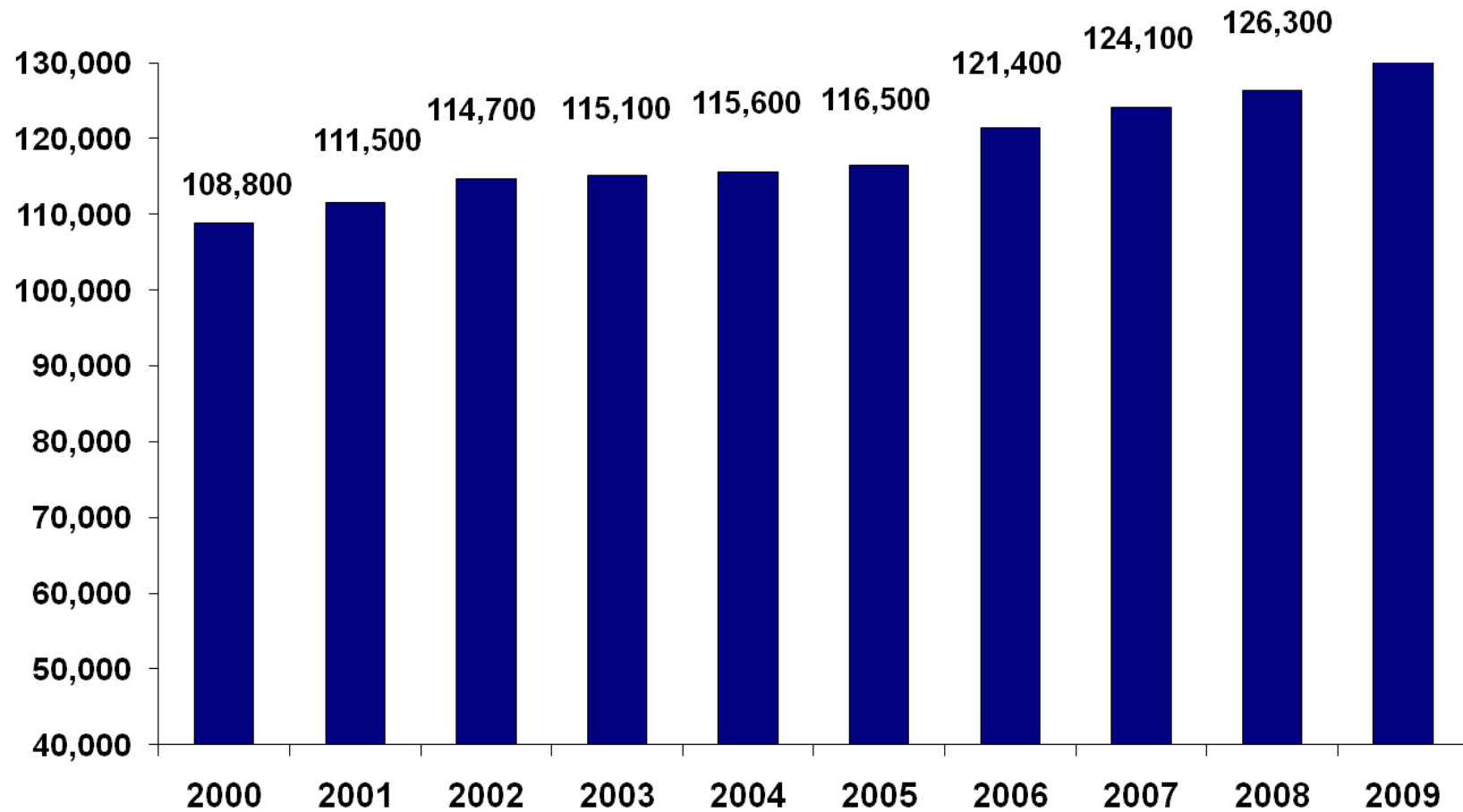
Source: ¹U.S. Census Bureau population estimates, July 2008, ²Bureau of Labor Statistics, 2008 preliminary (private sector only),

³Bureau of Labor Statistics, June 2009, ⁴American Community Survey, 2007

Brownsville-Harlingen MSA

Nonfarm Employment

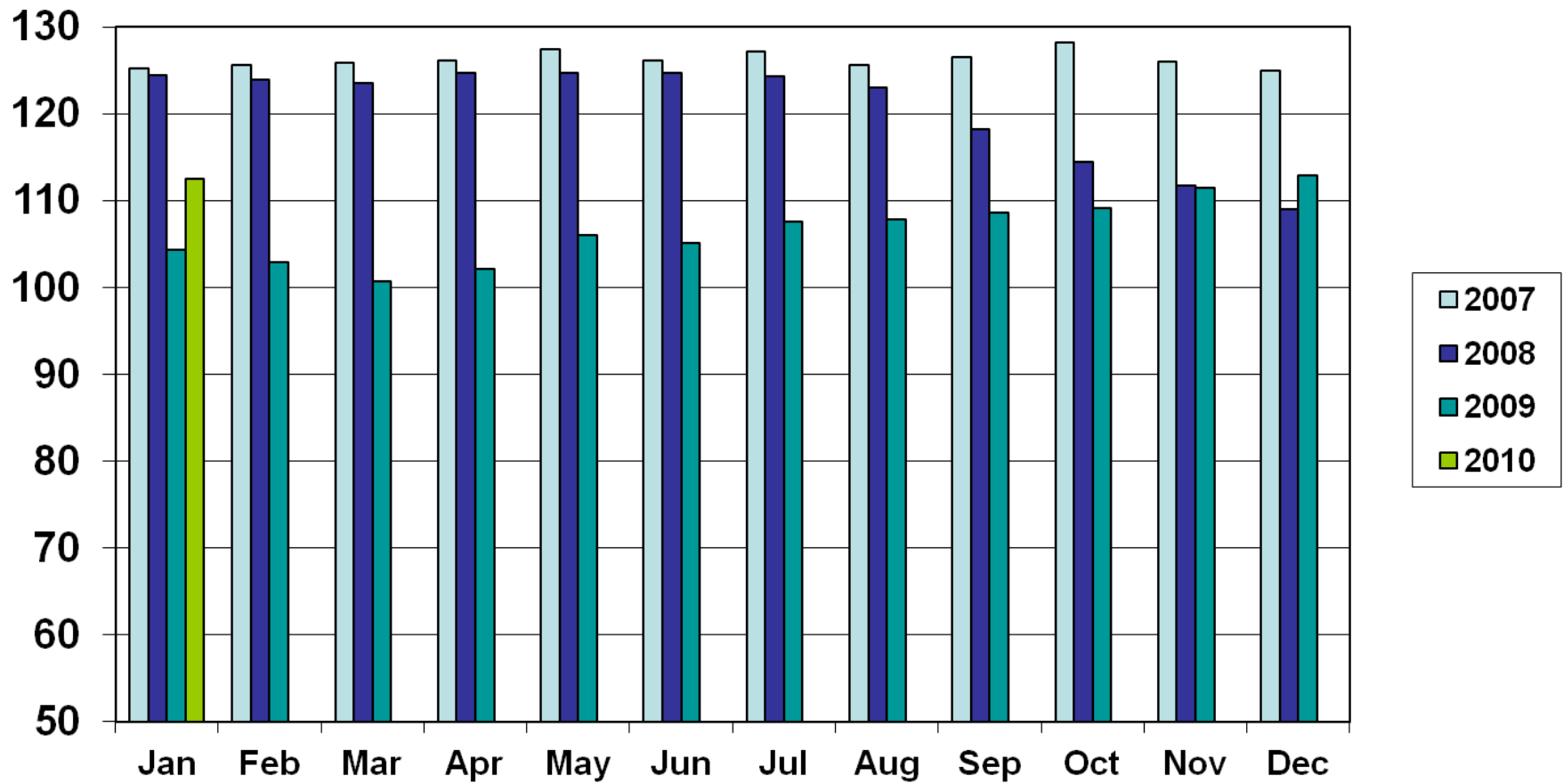
Not Seasonally Adjusted



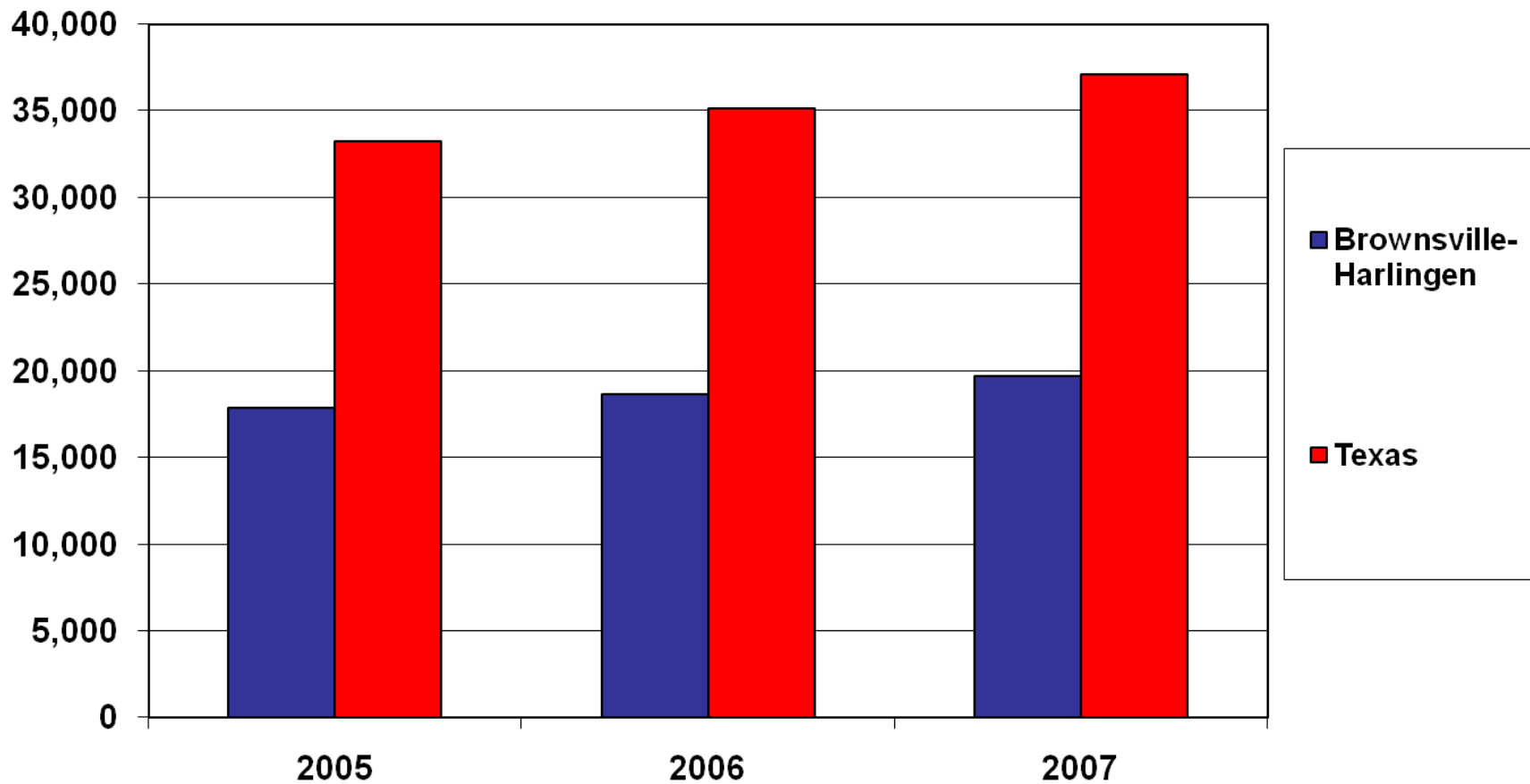
Source: Texas Workforce Commission's Labor Market and Career Information Department

Texas Index of Leading Indicators

Seasonally Adjusted



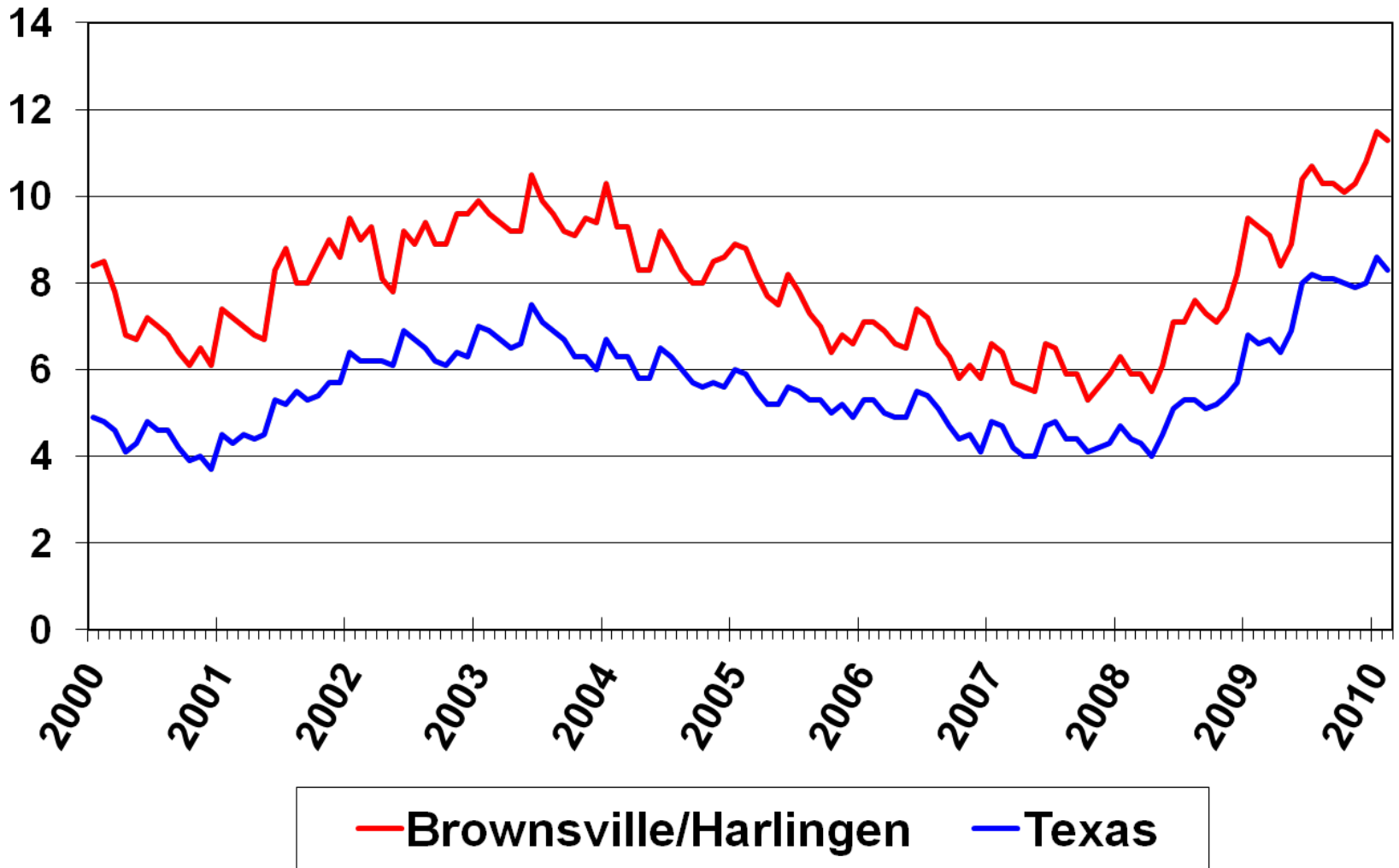
Brownsville-Harlingen MSA Per Capita Personal Income



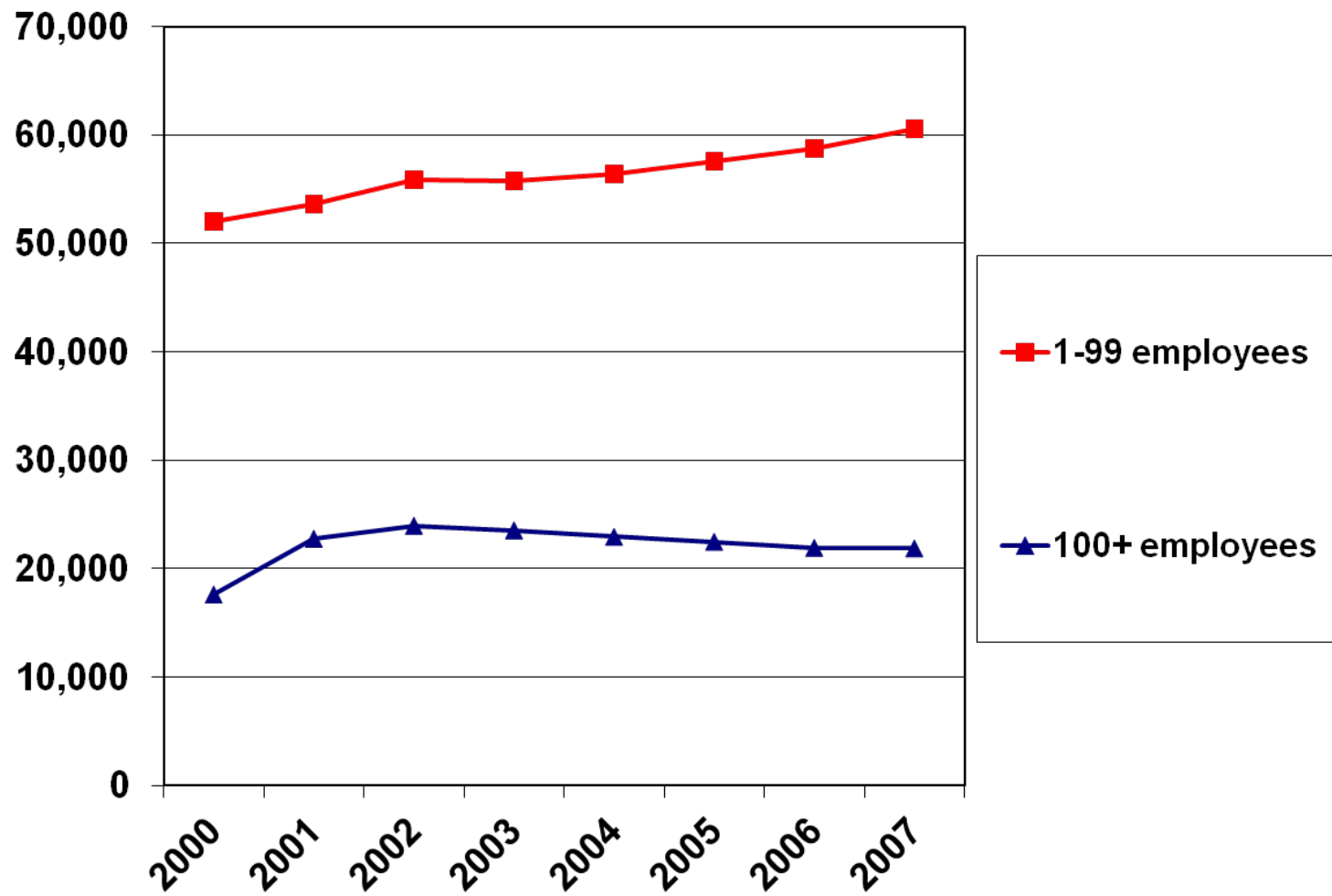
- Brownsville/Harlingen MSA percentage change from 2005-2006 is 4.3%.
- Brownsville/Harlingen MSA percentage change from 2006-2007 is 5.6%.

Unemployment Rate

(Not Seasonally Adjusted)

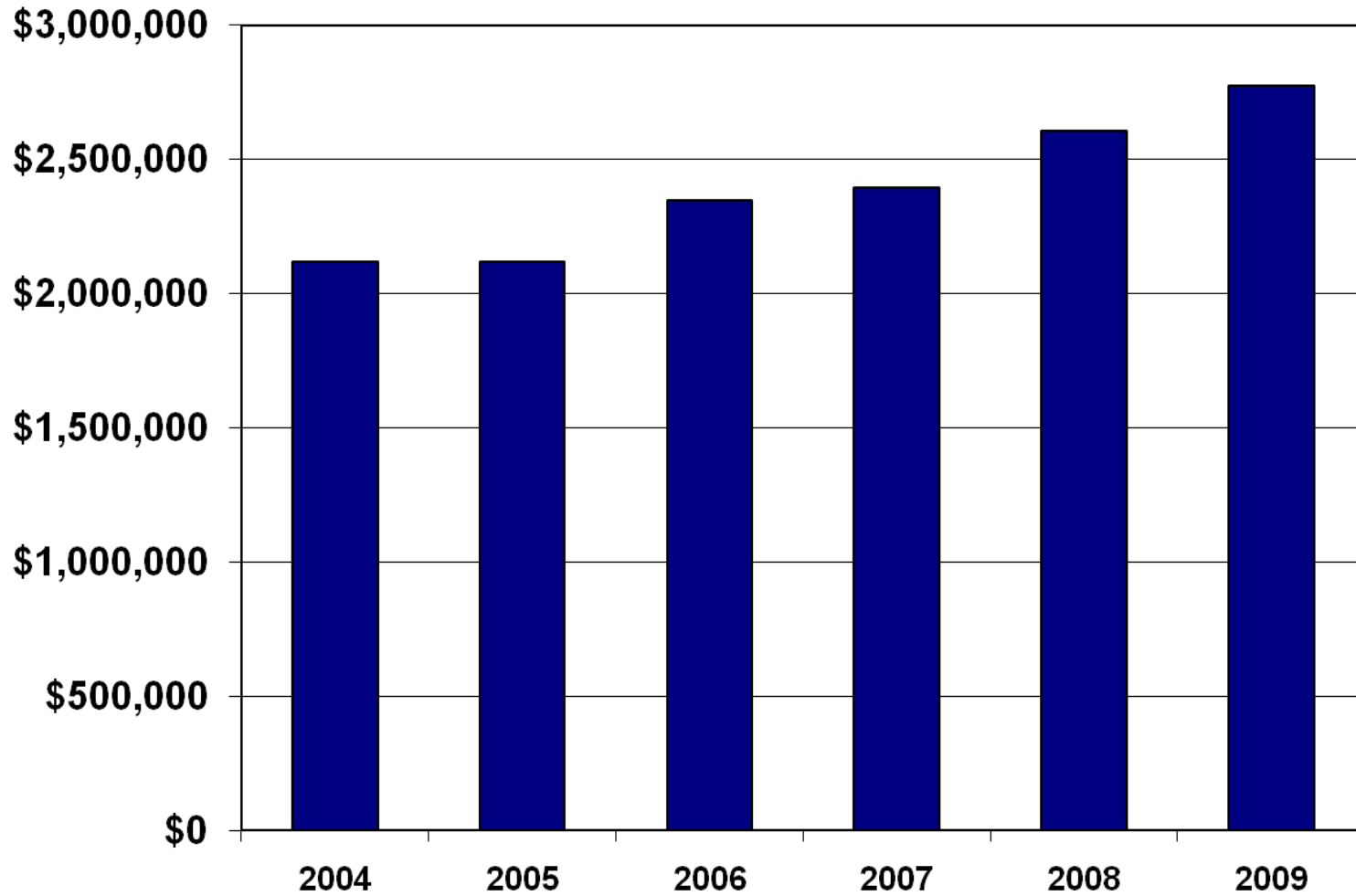


Brownsville-Harlingen MSA Job Growth



Brownsville Bank Deposits

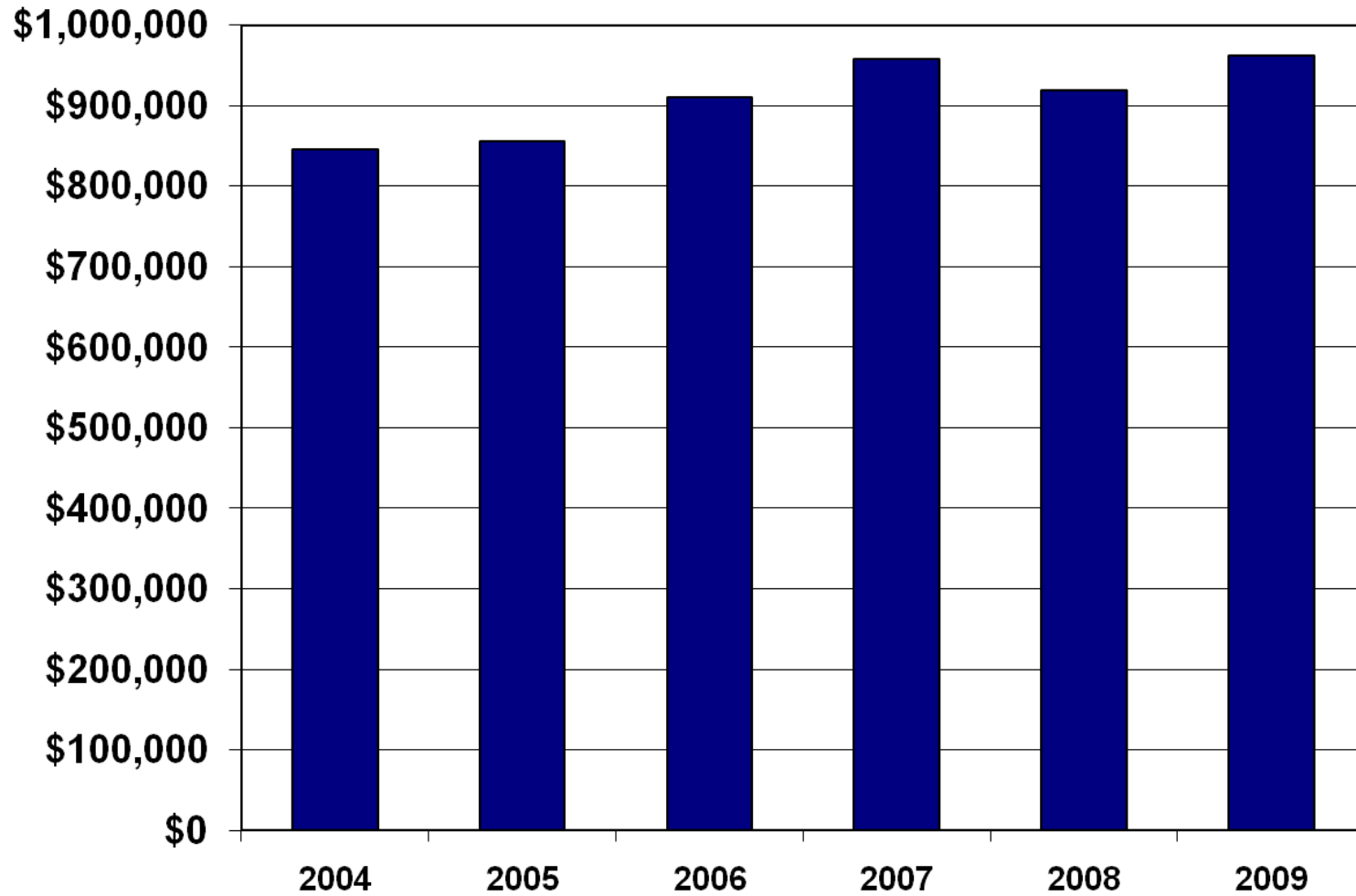
(in thousands of dollars)



Source: Federal Deposit Insurance Corporation

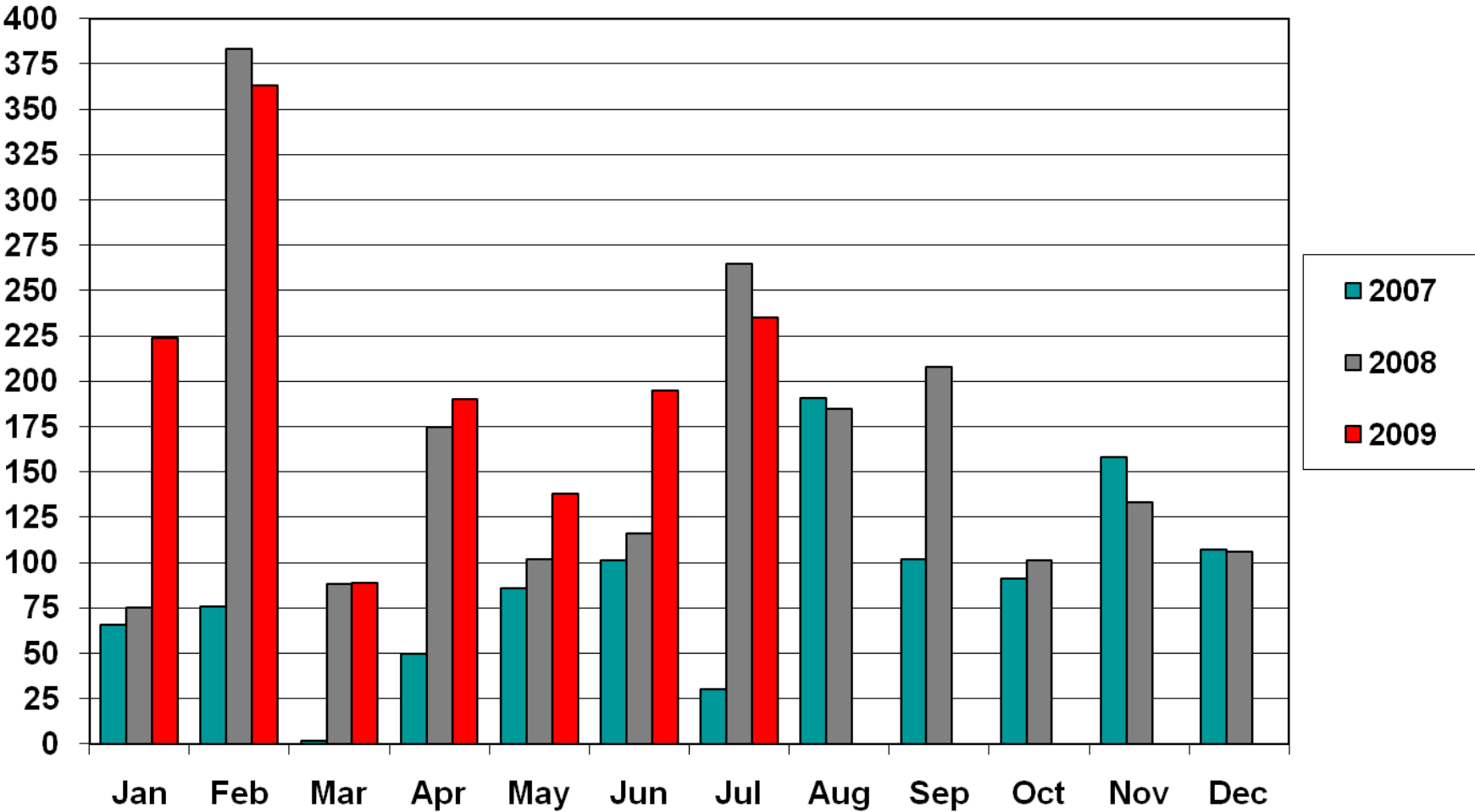
Harlingen Bank Deposits

(in thousands of dollars)



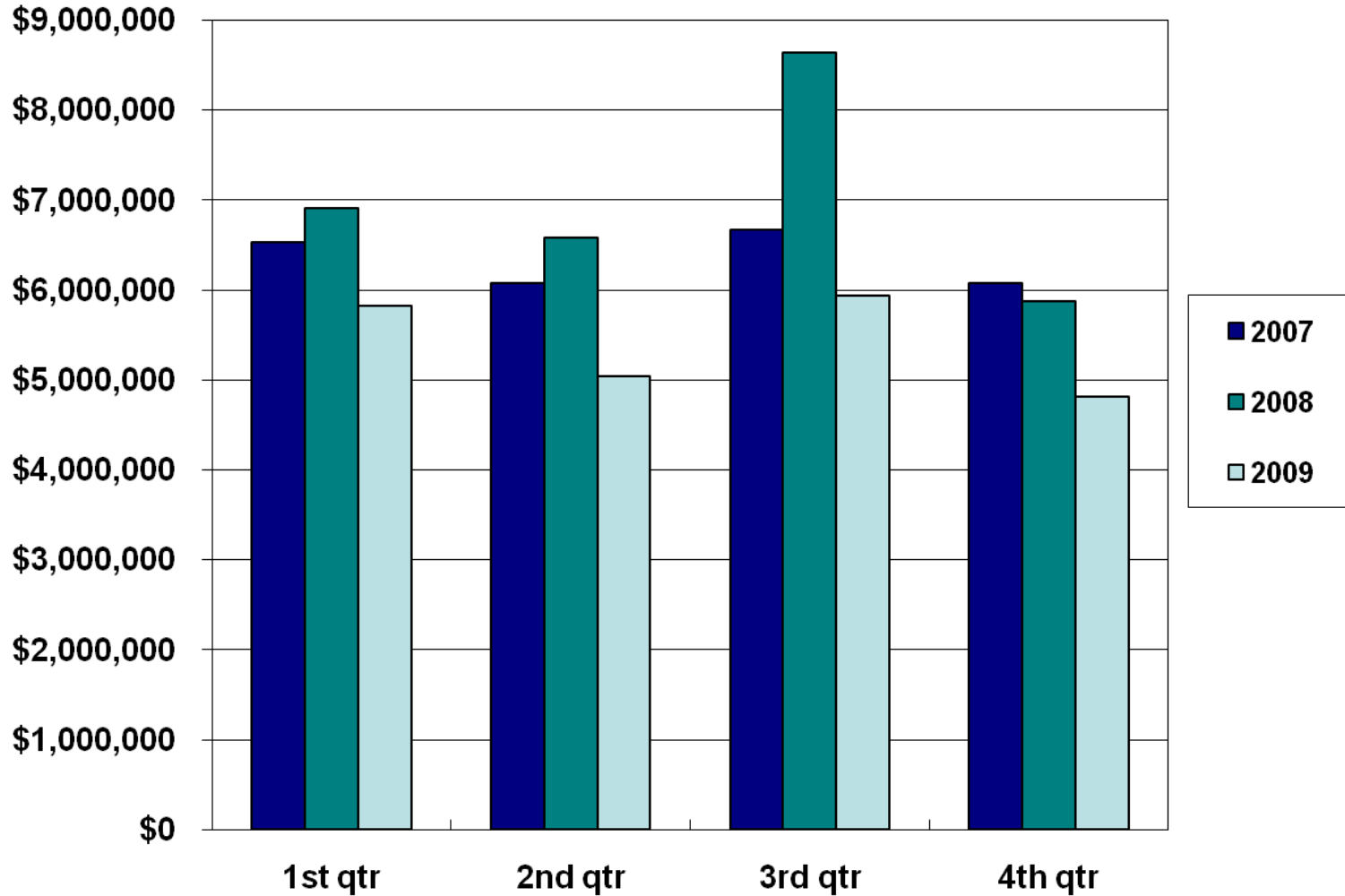
Source: Federal Deposit Insurance Corporation

Cameron County Foreclosures



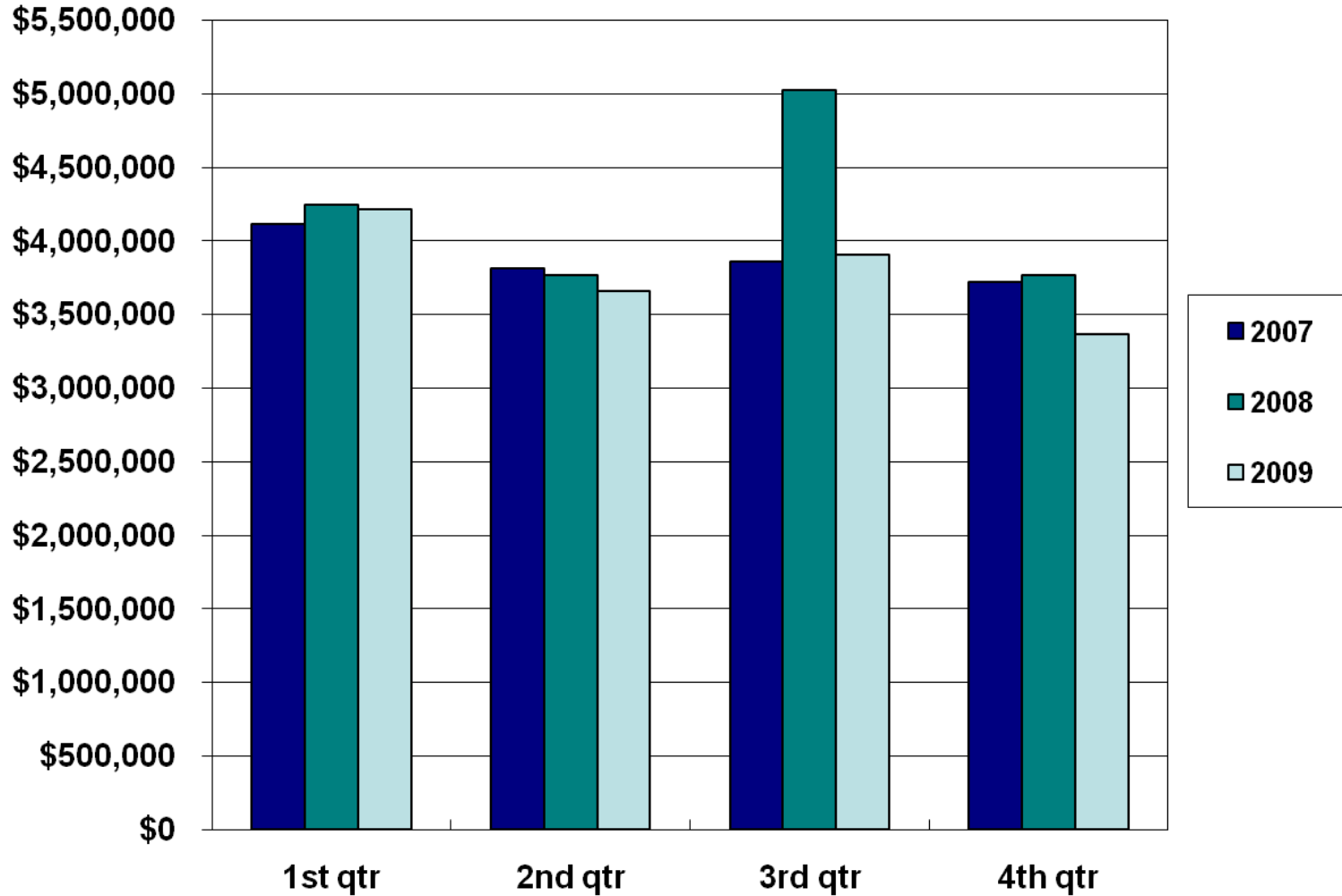
source: mysa.com

Brownsville Hotel Receipts



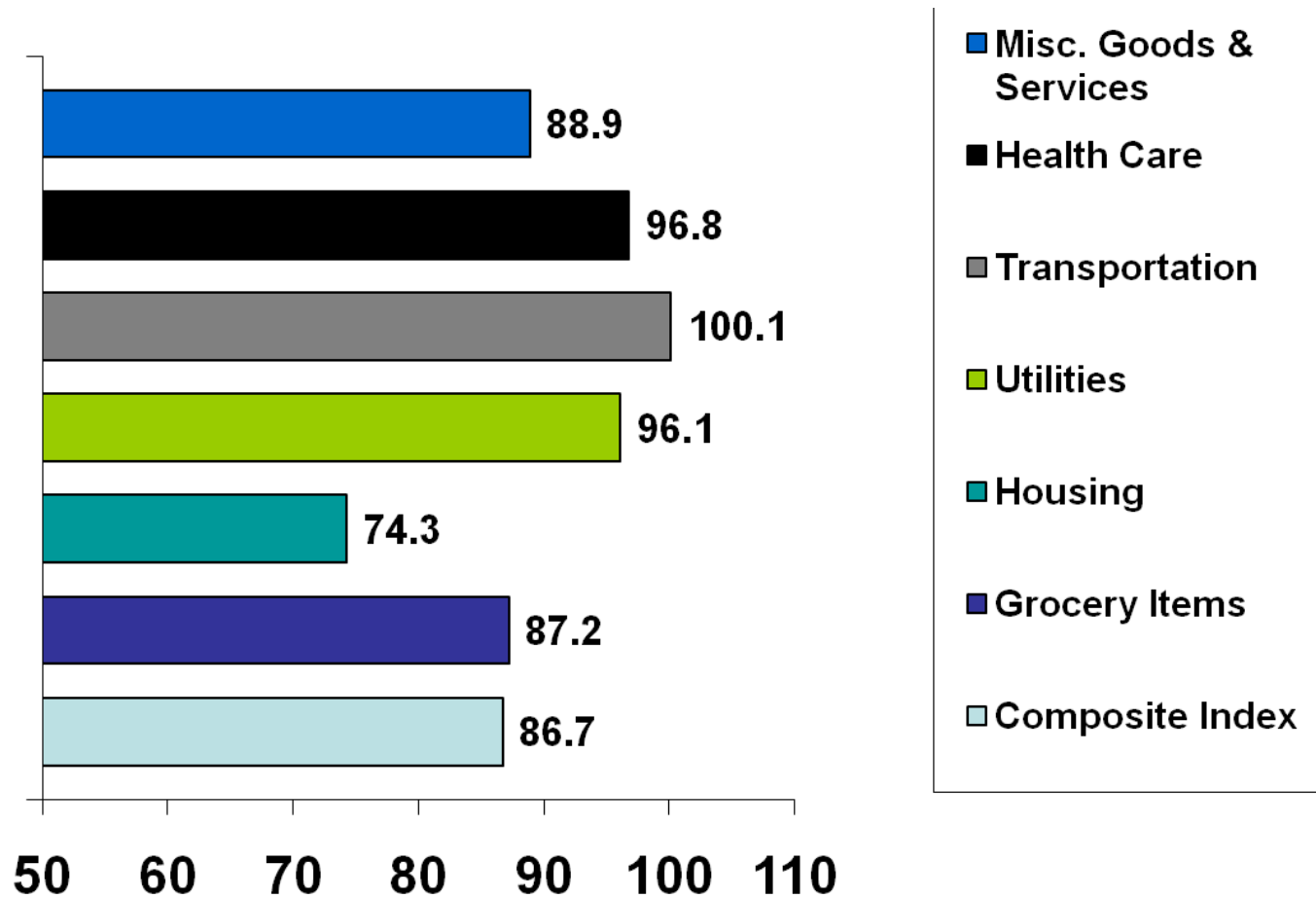
Source: Texas Comptroller of Public Accounts

Harlingen Hotel Receipts



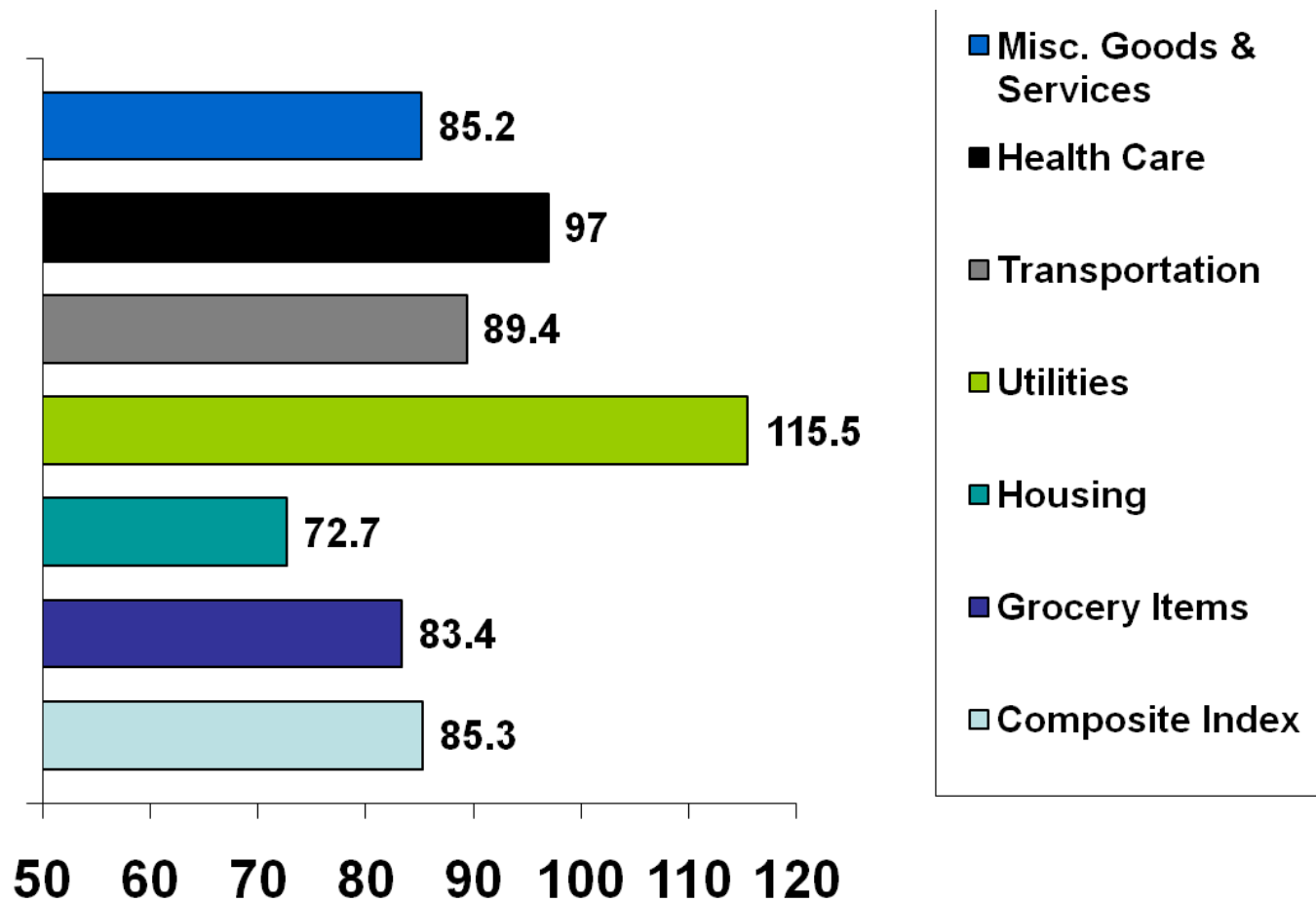
Brownsville Cost of Living Index

2008 Annual Average



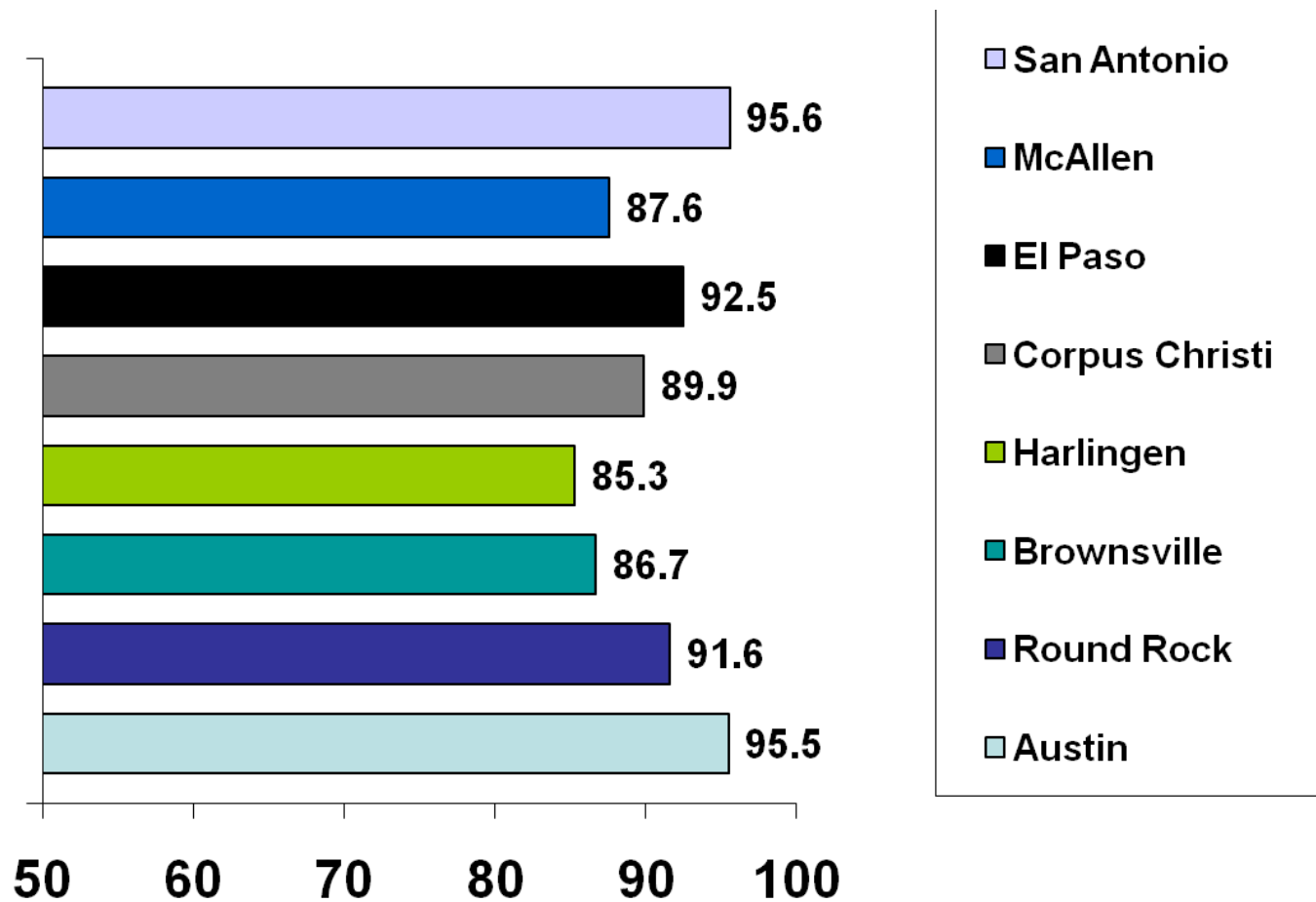
Harlingen Cost of Living Index

2008 Annual Average



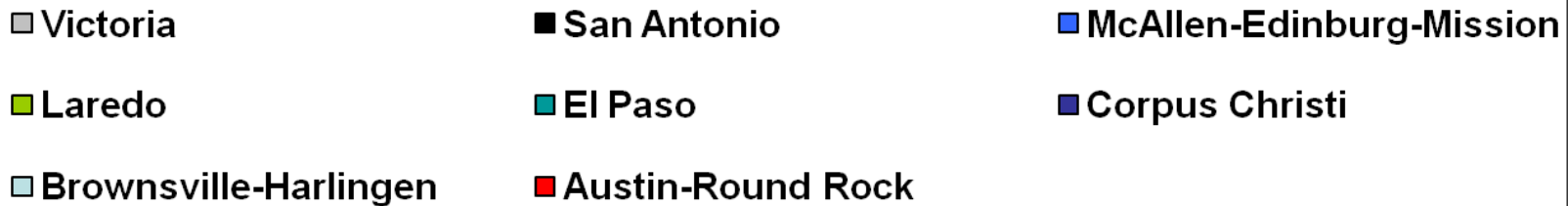
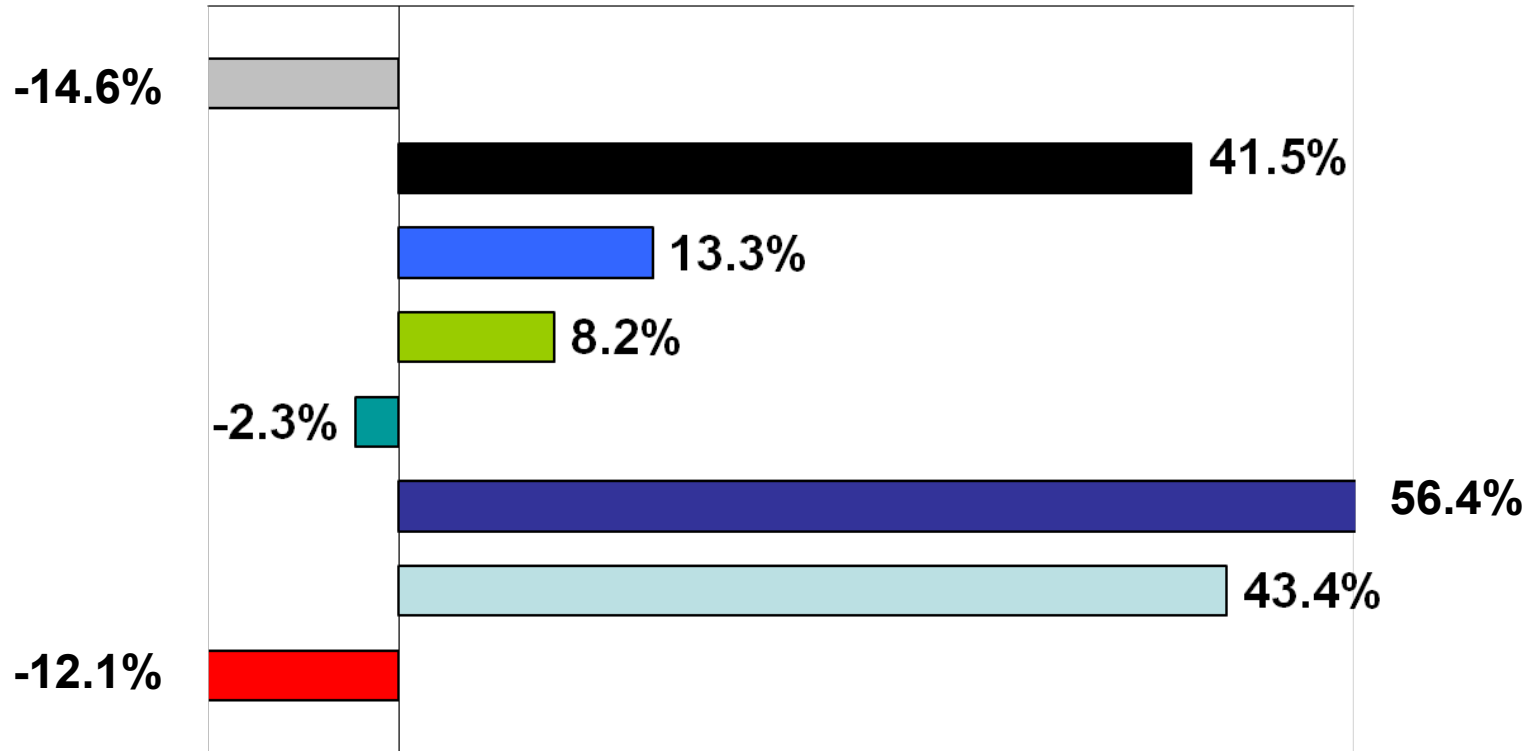
Cost of Living Composite Index

2008 Annual Average



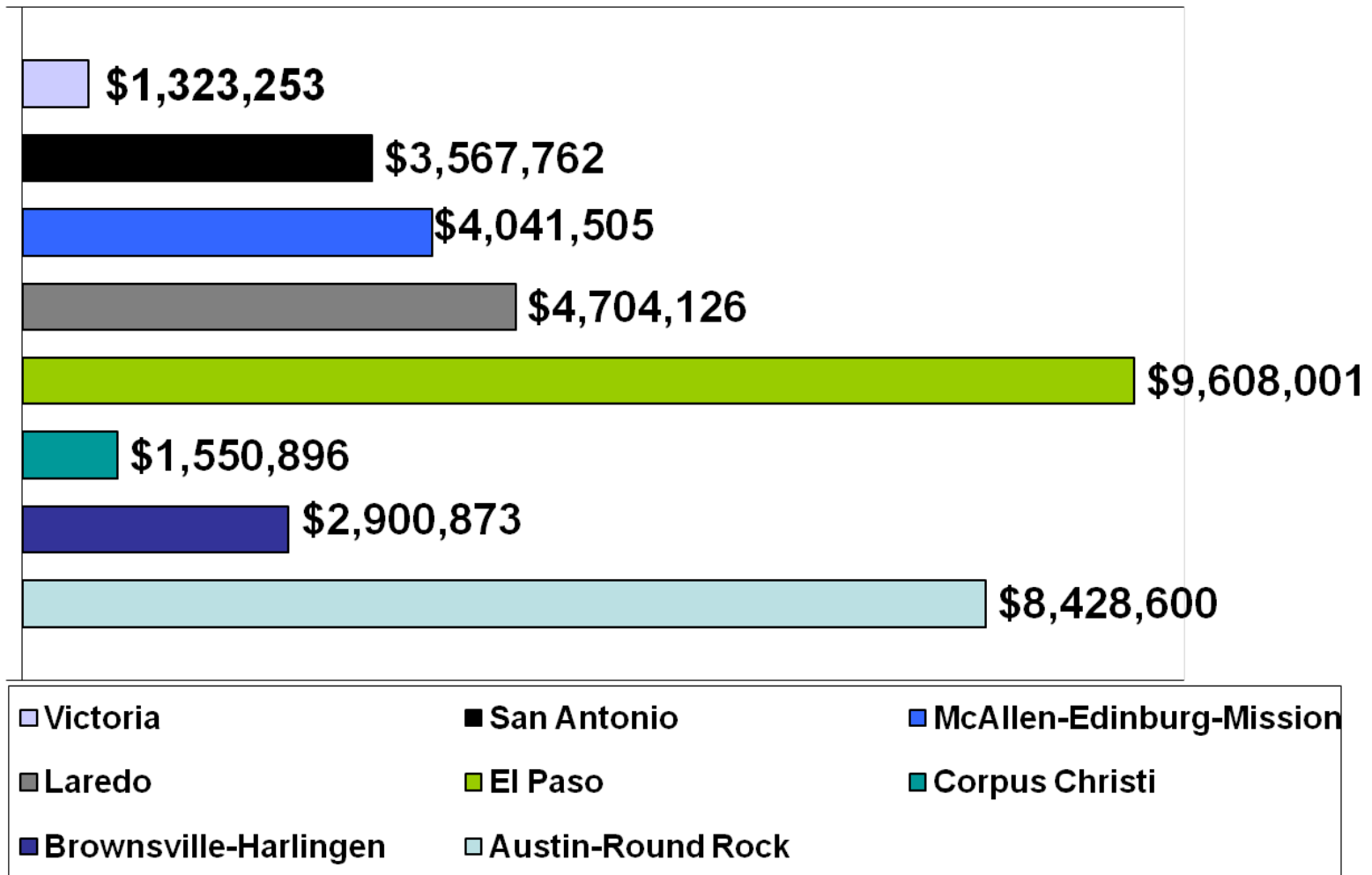
Area MSA Exports

Percentage Change from 2007 to 2008

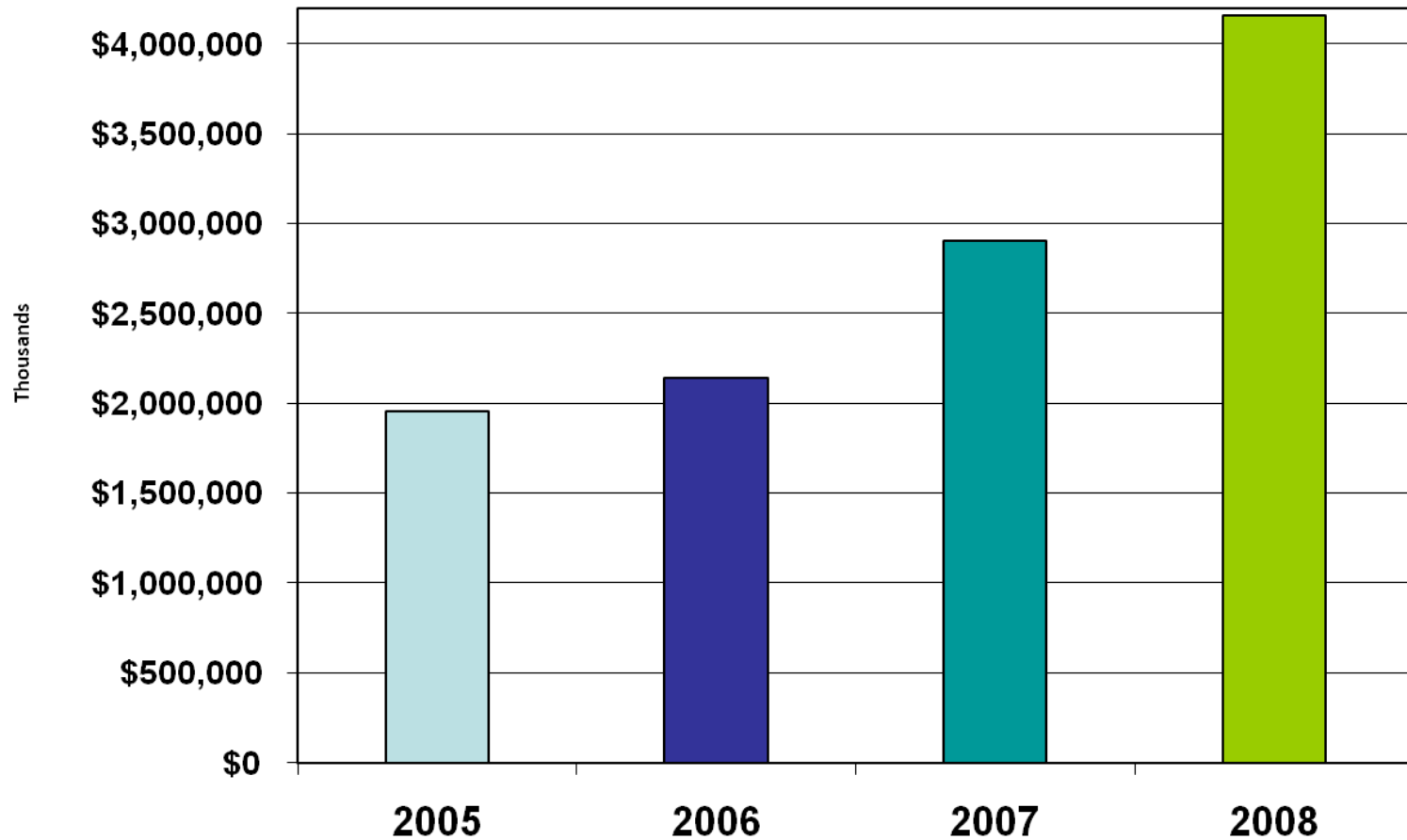


Area MSA Exports

2007

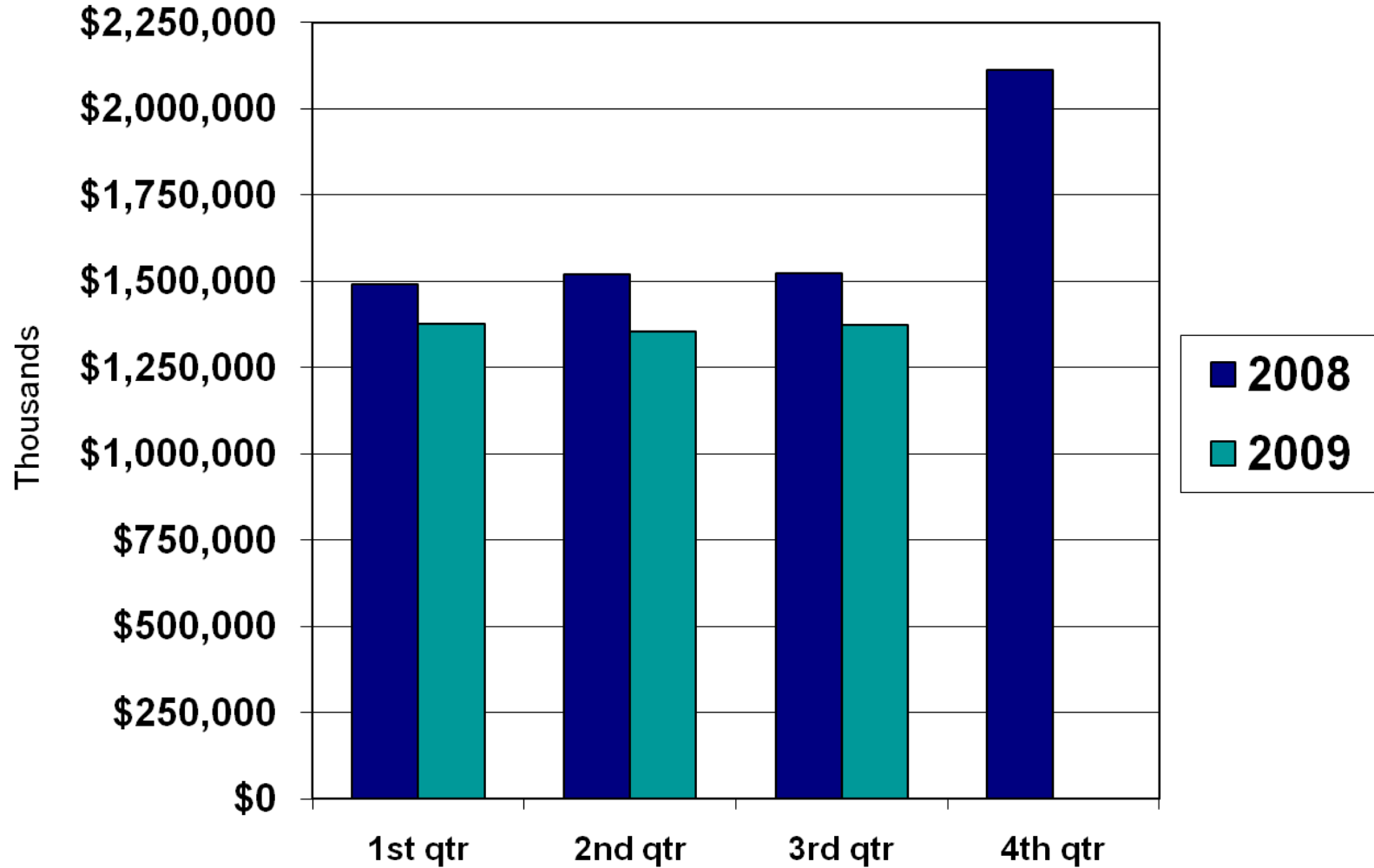


Brownsville-Harlingen MSA Exports

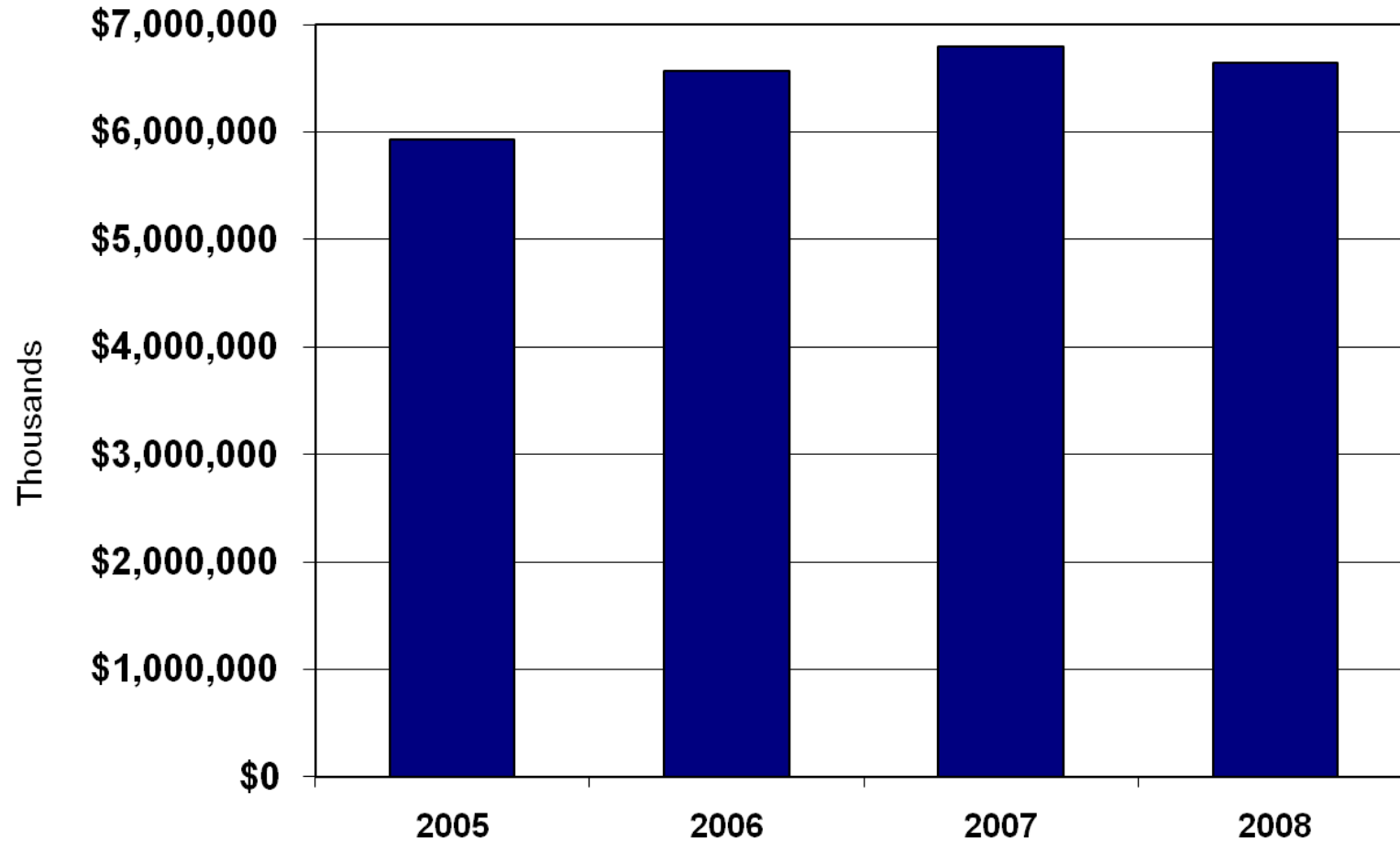


Source: U.S. Department of Commerce International Trade Administration

Brownsville-Harlingen MSA Gross Sales

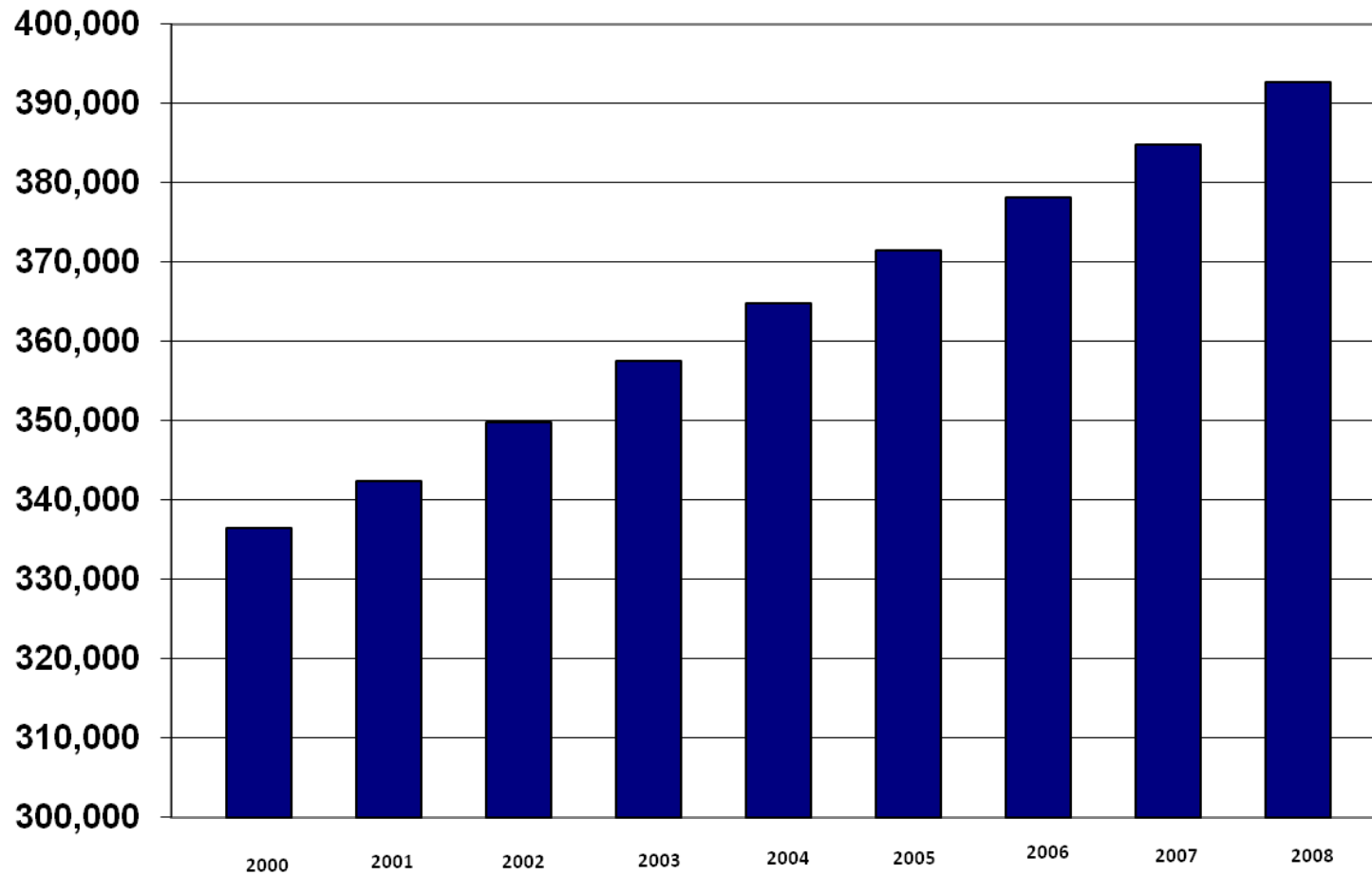


Brownsville-Harlingen MSA Gross Sales



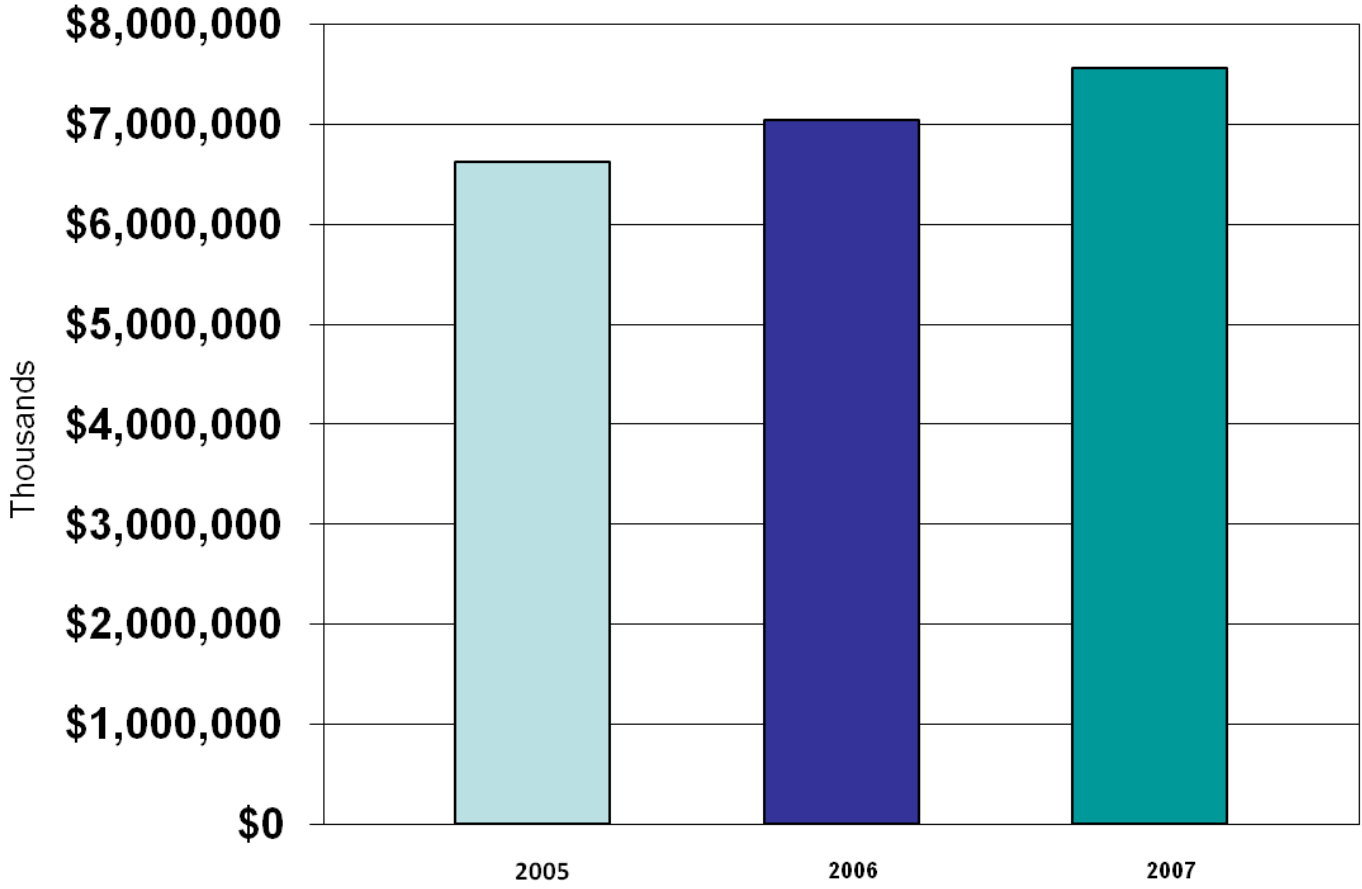
Source: Texas State Comptroller

Cameron County Population



Source: U.S. Census Population Estimates

Brownsville-Harlingen MSA Personal Income

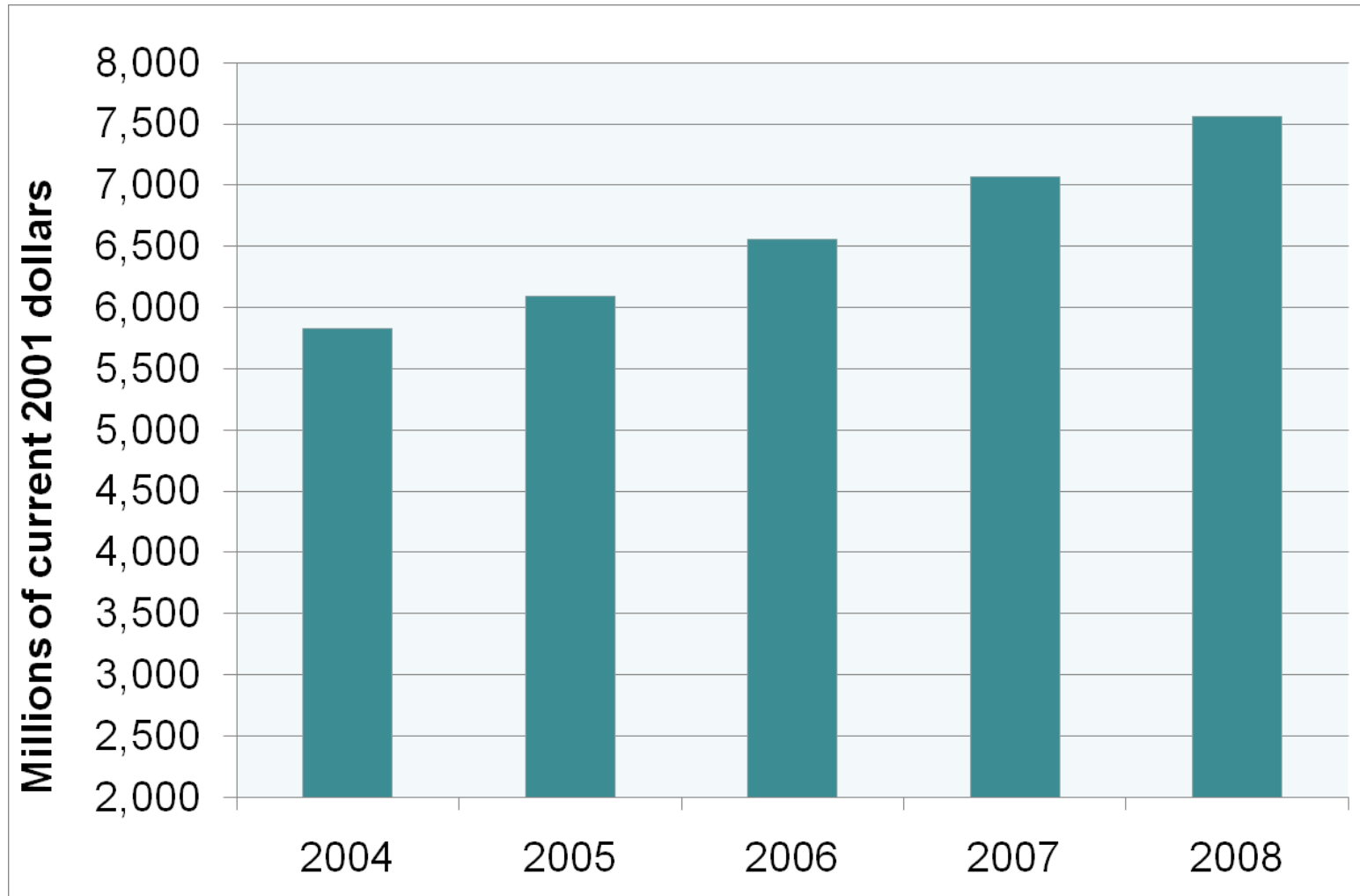


-Percentage change from 2005-2006 is 6.2%
-Percentage change from 2006-2007 is 7.5%

Source: <http://www.bea.gov/regional/reis/>

Brownsville-Harlingen MSA GDP

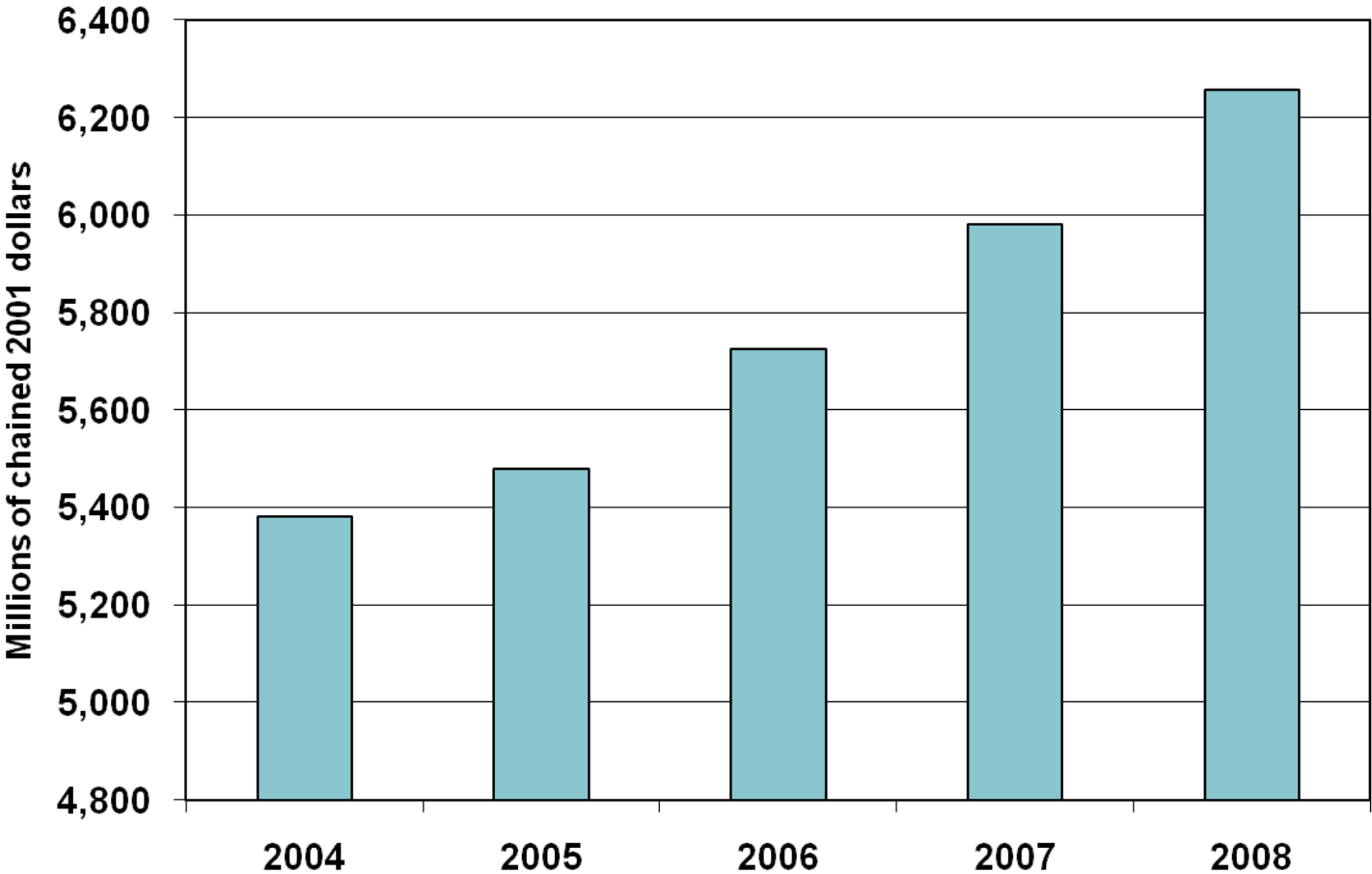
(all industry total)



Source: Bureau of Economic Analysis

Brownsville-Harlingen MSA Real GDP

(all industry total)

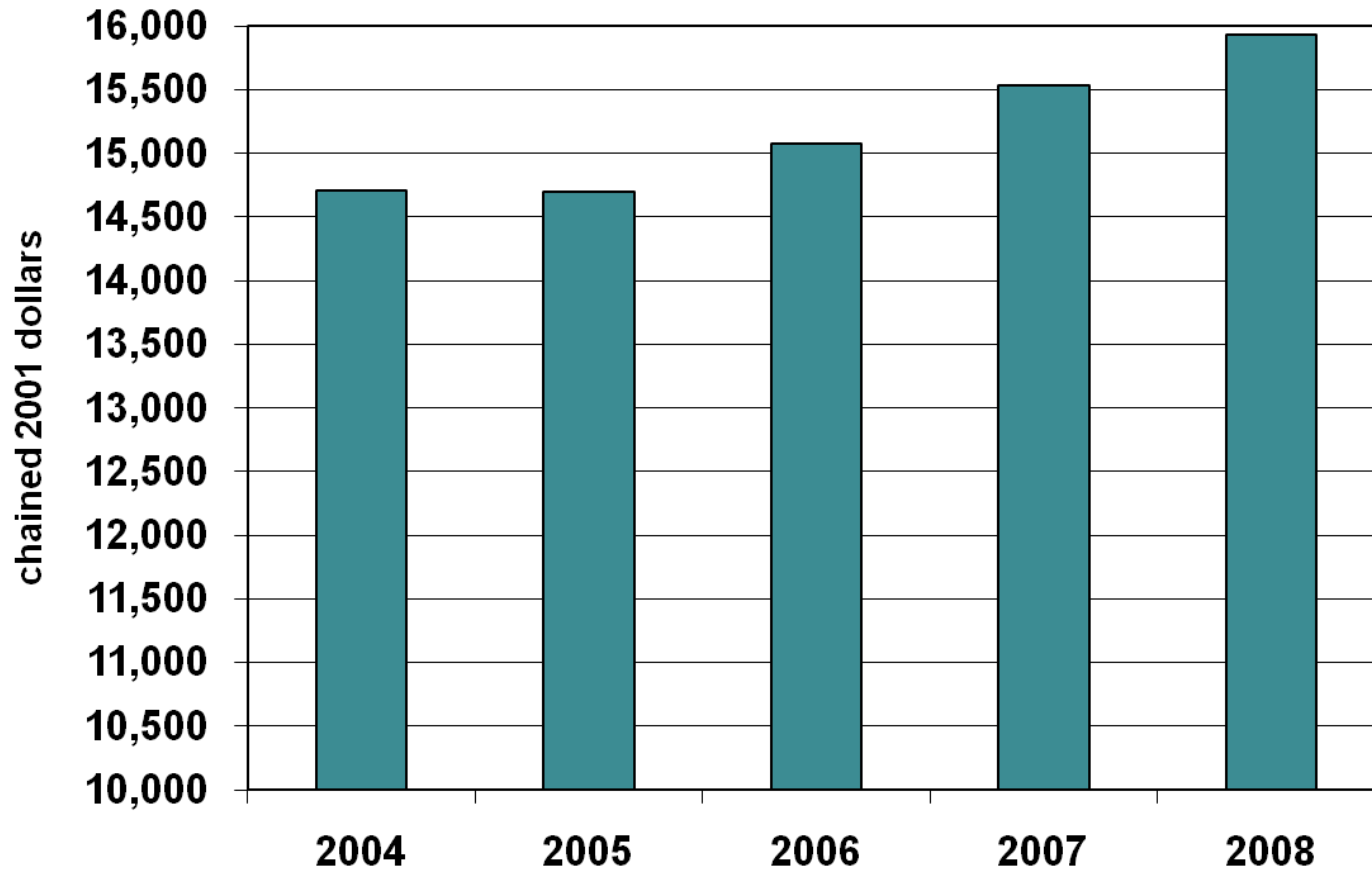


Source: Bureau of Economic Analysis

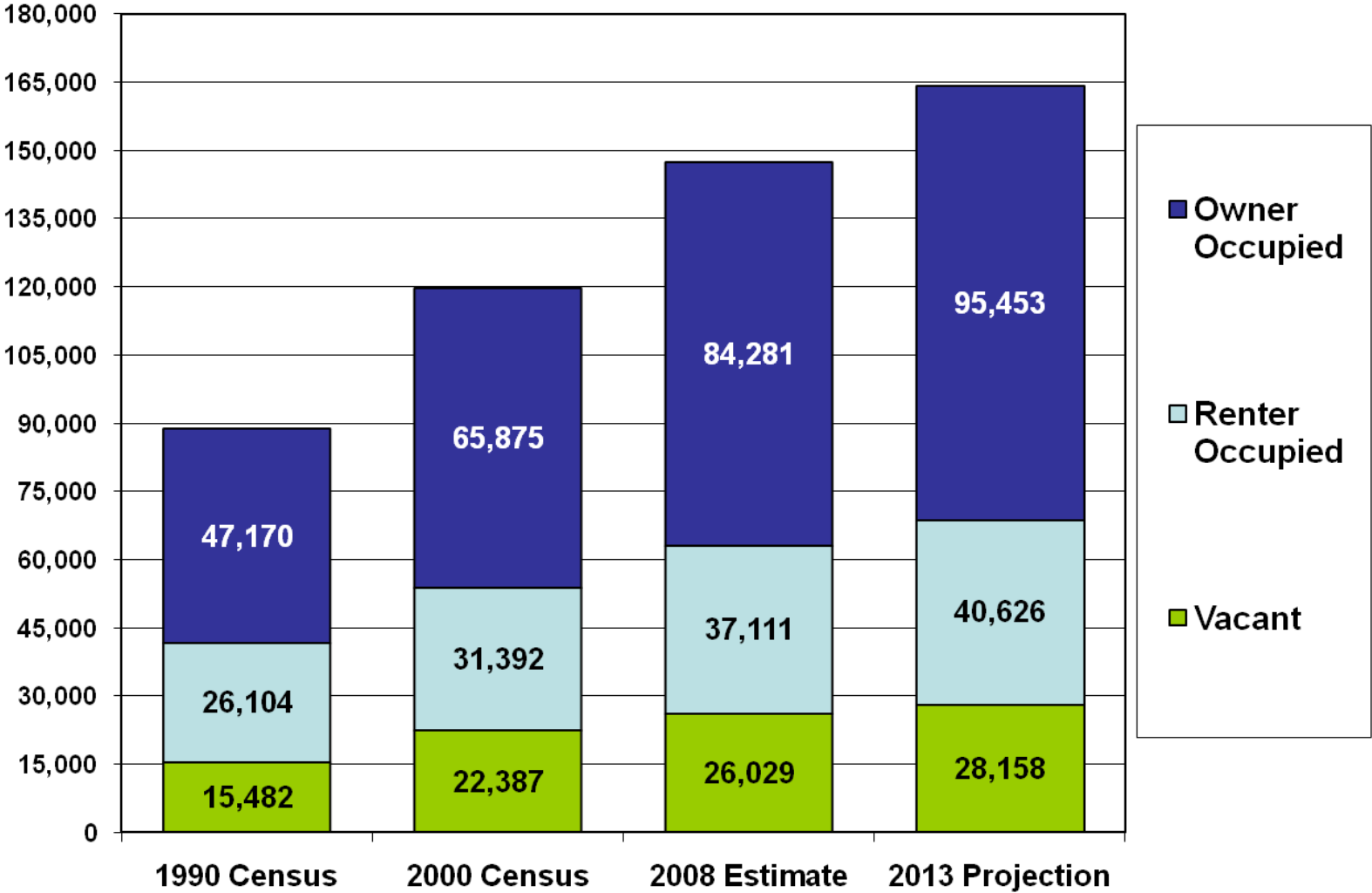
Brownsville-Harlingen MSA

Per Capita Real GDP

(all industry total)



Brownsville-Edinburg MSA Housing Units



Source: SBDC National Information Clearinghouse