

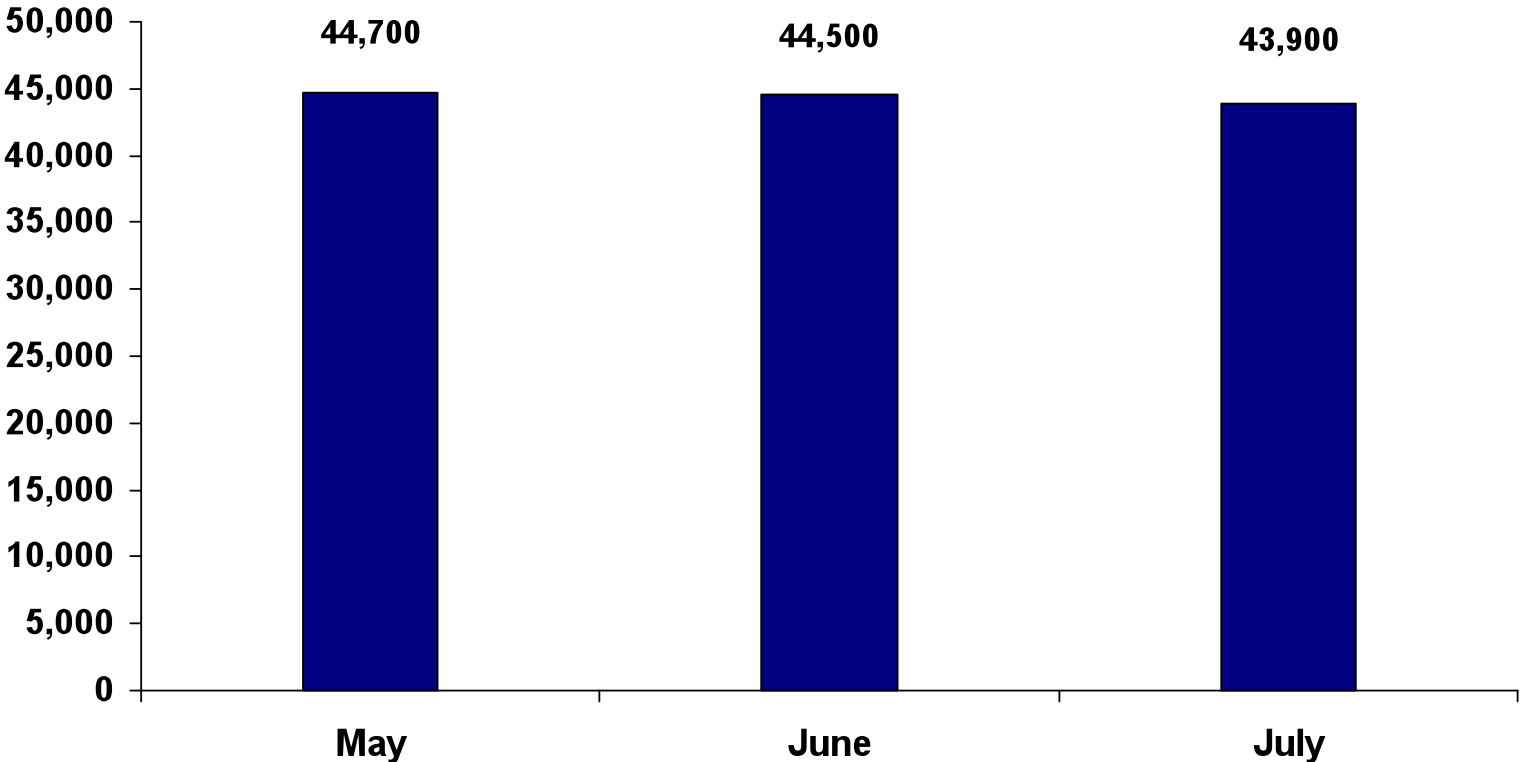
General Area Statistics for Tom Green County

Population ¹	107,864
Average annual wage ²	\$32,166
Number in labor force ³	53,241
Number employed ³	49,615
Percent unemployed ³	6.8%
Median household income ⁴	\$40,938
Median housing value ⁴	\$84,500
Median gross rent ⁴	\$672
Per Capita Income ⁴	\$20,650
Poverty rate ⁴	12.4%
High school graduates ⁴	81%
Bachelor's degree or higher ⁴	21.3%

Source: ¹U.S. Census Bureau population estimates, July 2008, ²Bureau of Labor Statistics, 2008 preliminary (private sector only),

³Bureau of Labor Statistics, June 2009, ⁴American Community Survey, 2007

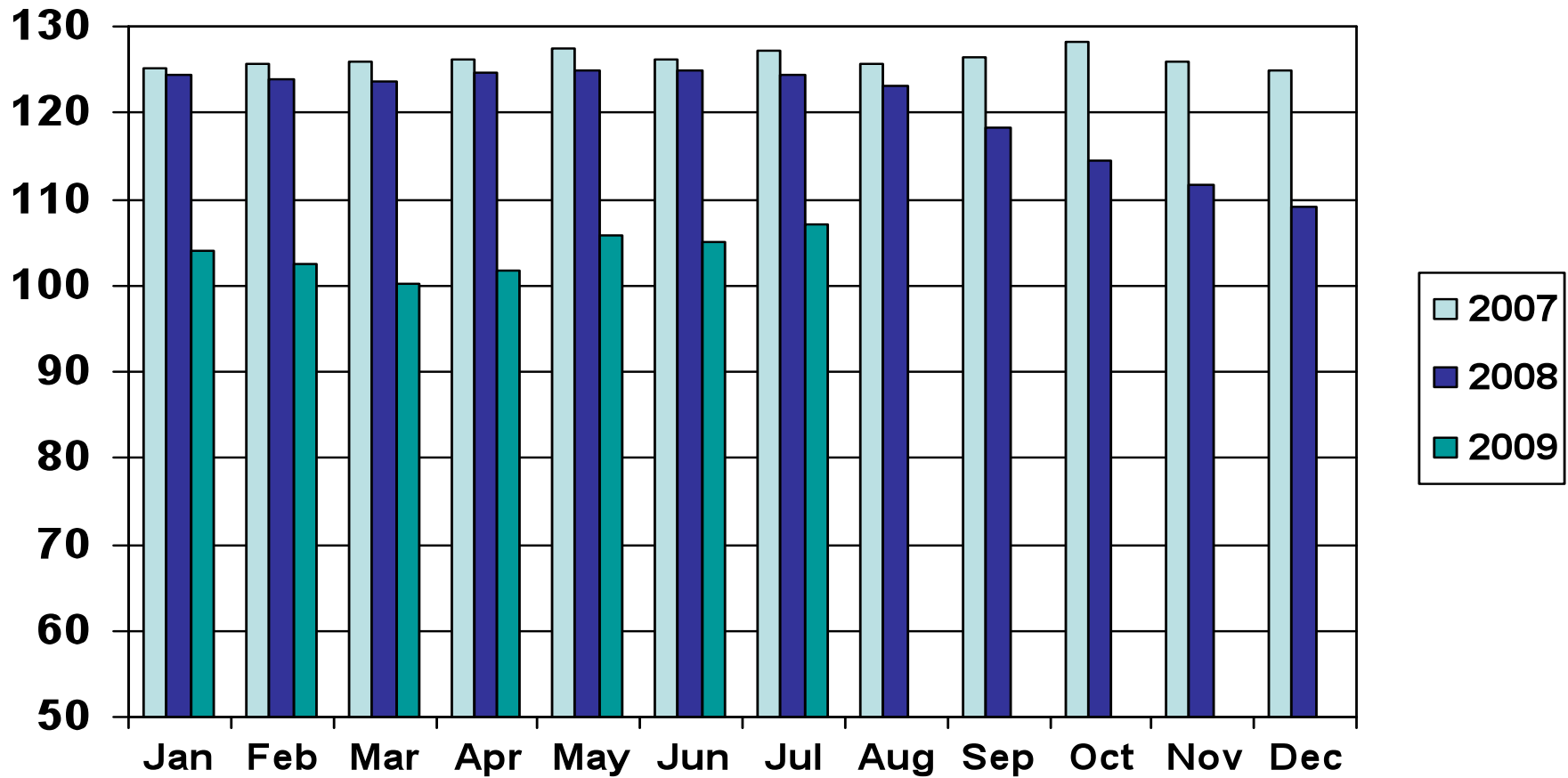
San Angelo MSA Nonfarm Employment Not Seasonally Adjusted



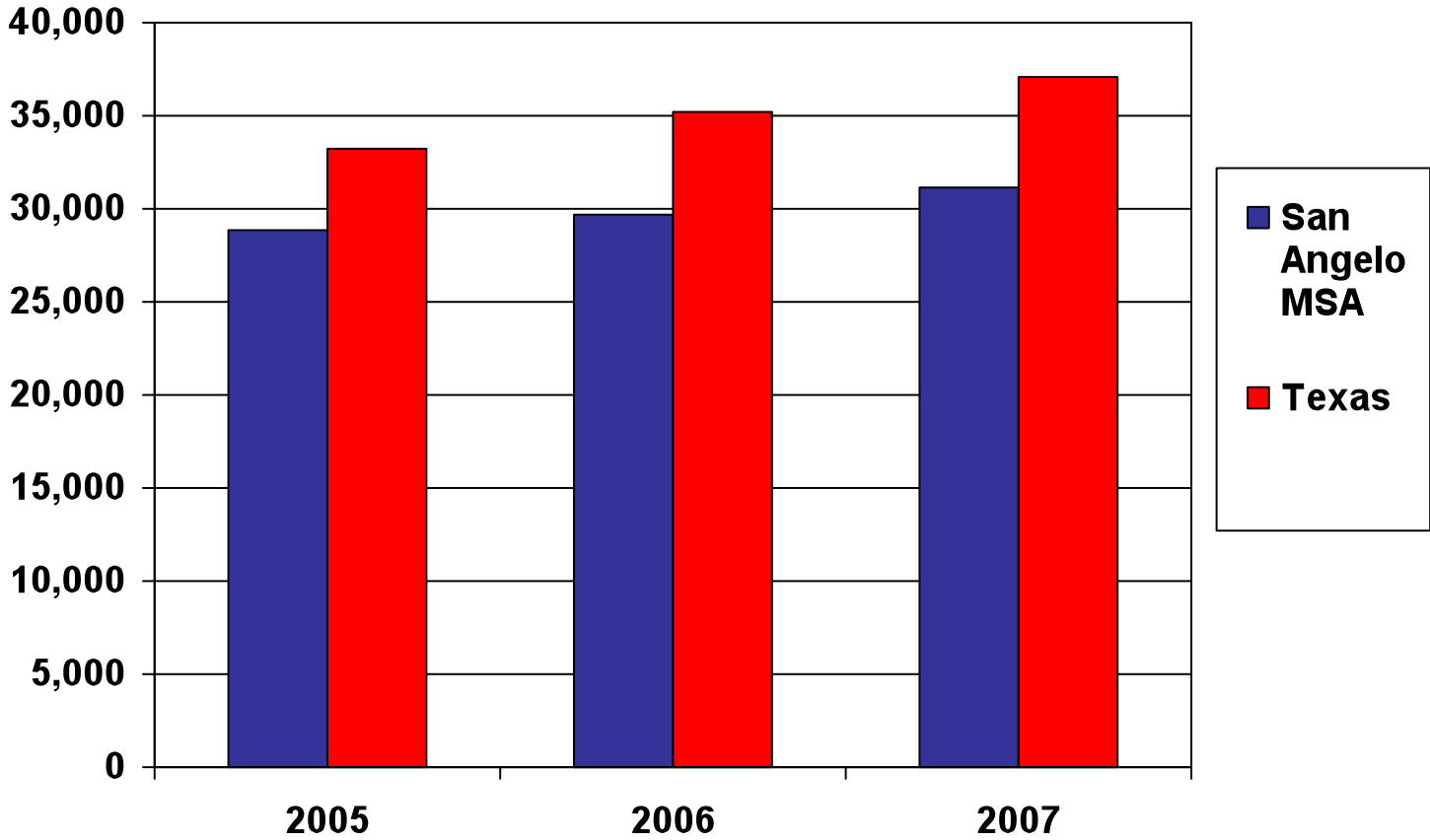
Source: Texas Workforce Commission's Labor Market and Career Information Department

Texas Index of Leading Indicators

Seasonally Adjusted



San Angelo MSA Per Capita Personal Income

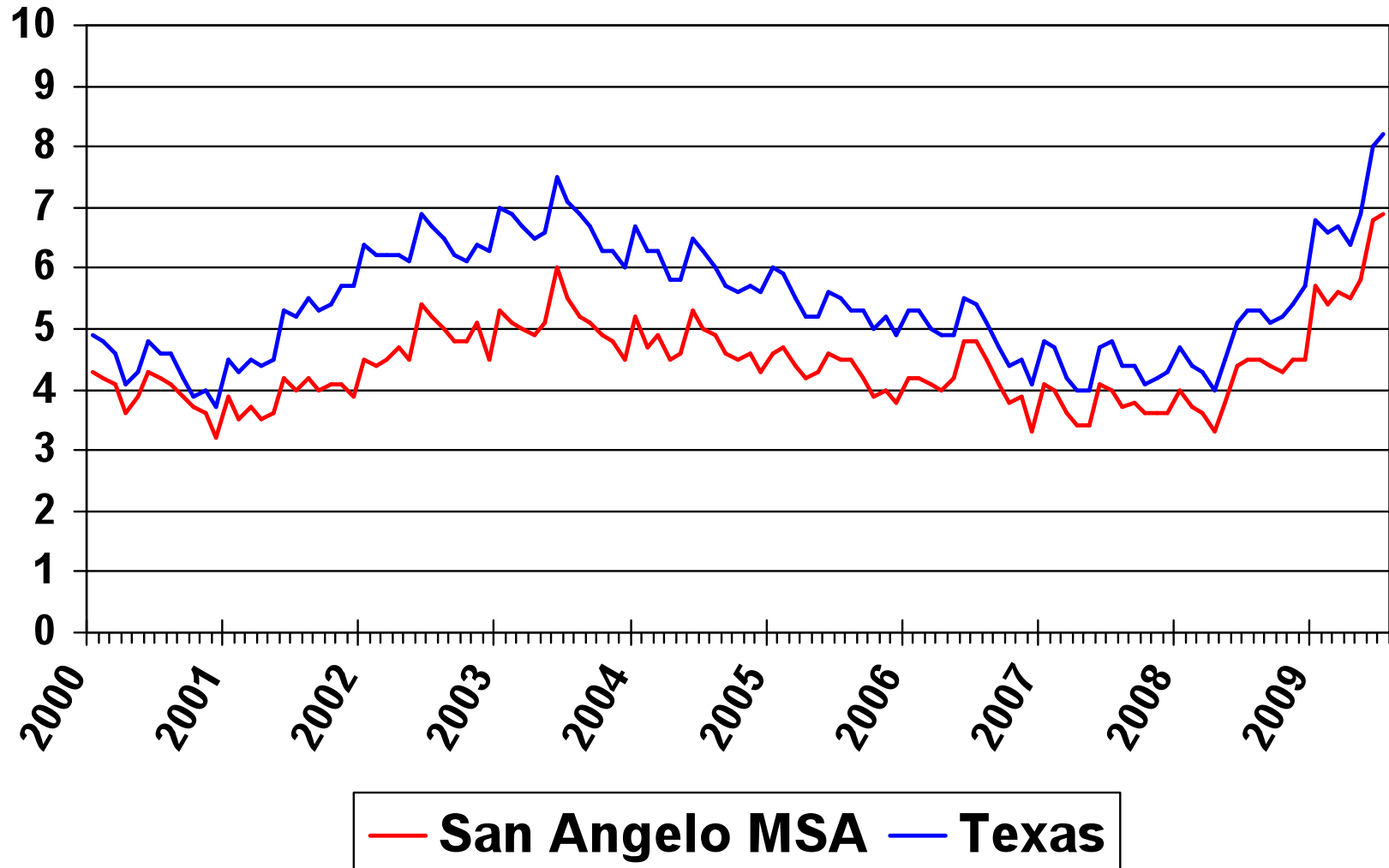


- San Angelo MSA percentage change from 2005-2006 is 2.9%.
- San Angelo MSA percentage change from 2006-2007 is 4.7%.

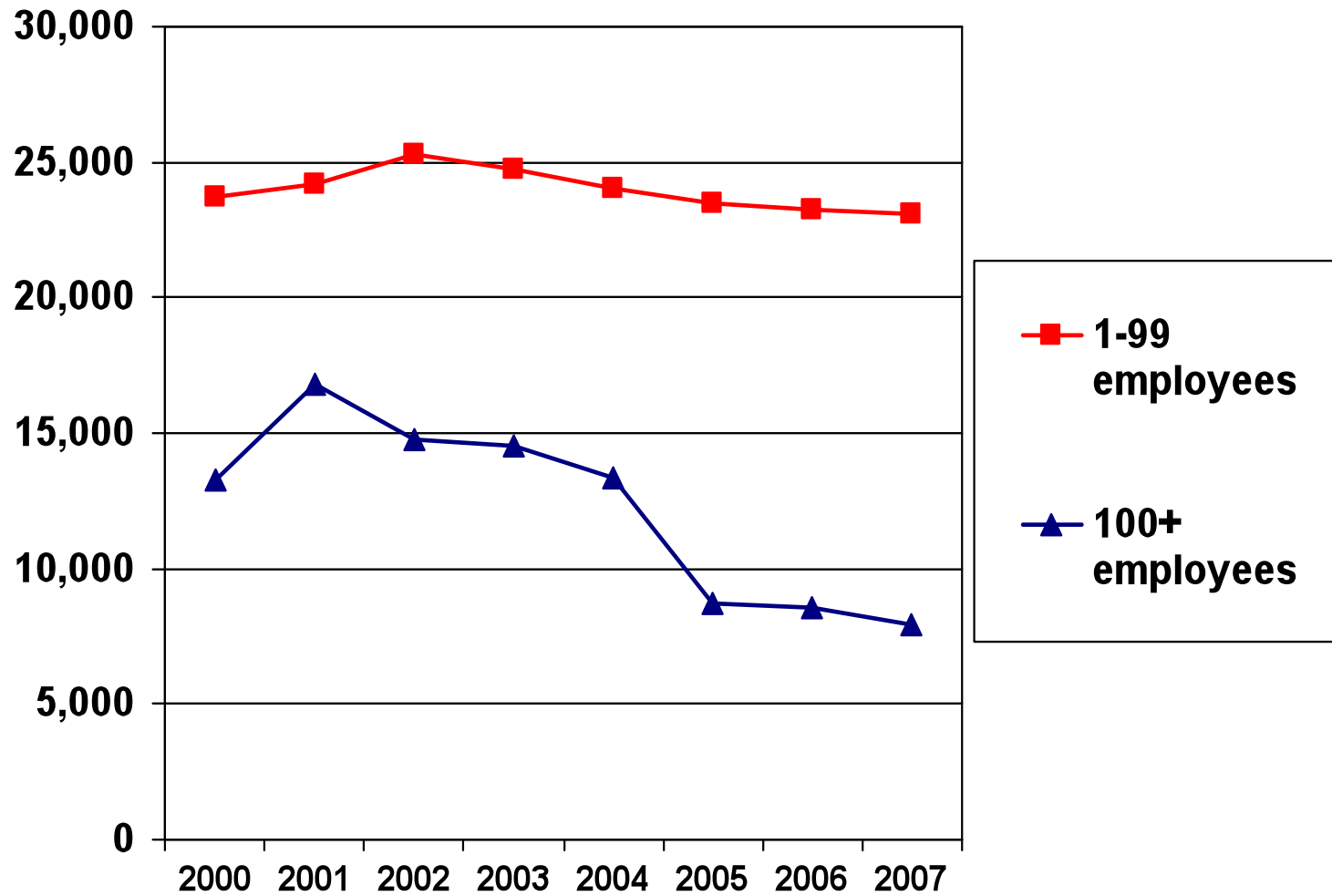
Source: Bureau of Economic Analysis <http://www.bea.gov/regional/reis/>

Unemployment Rate

(Not Seasonally Adjusted)

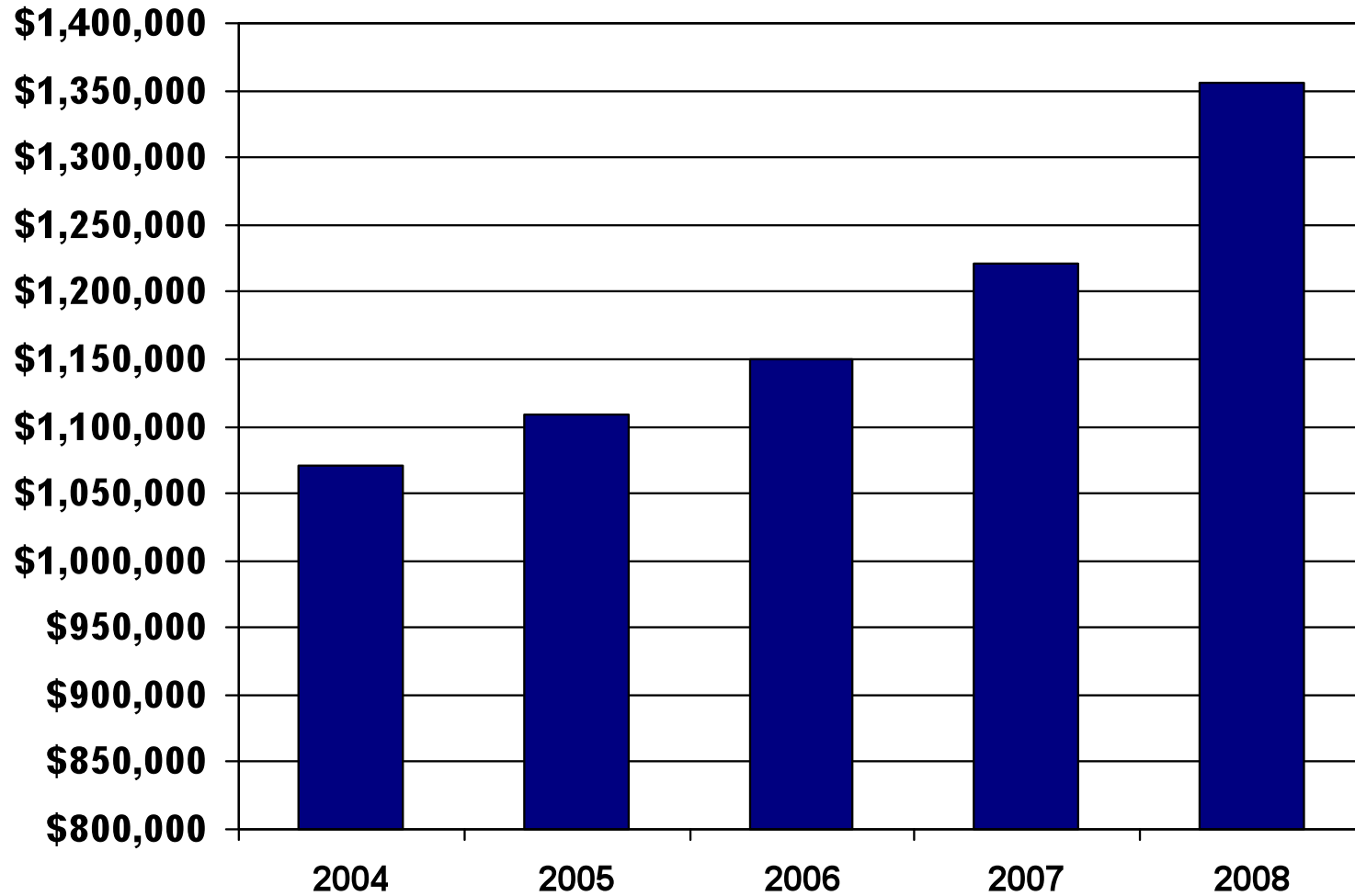


San Angelo MSA Job Growth



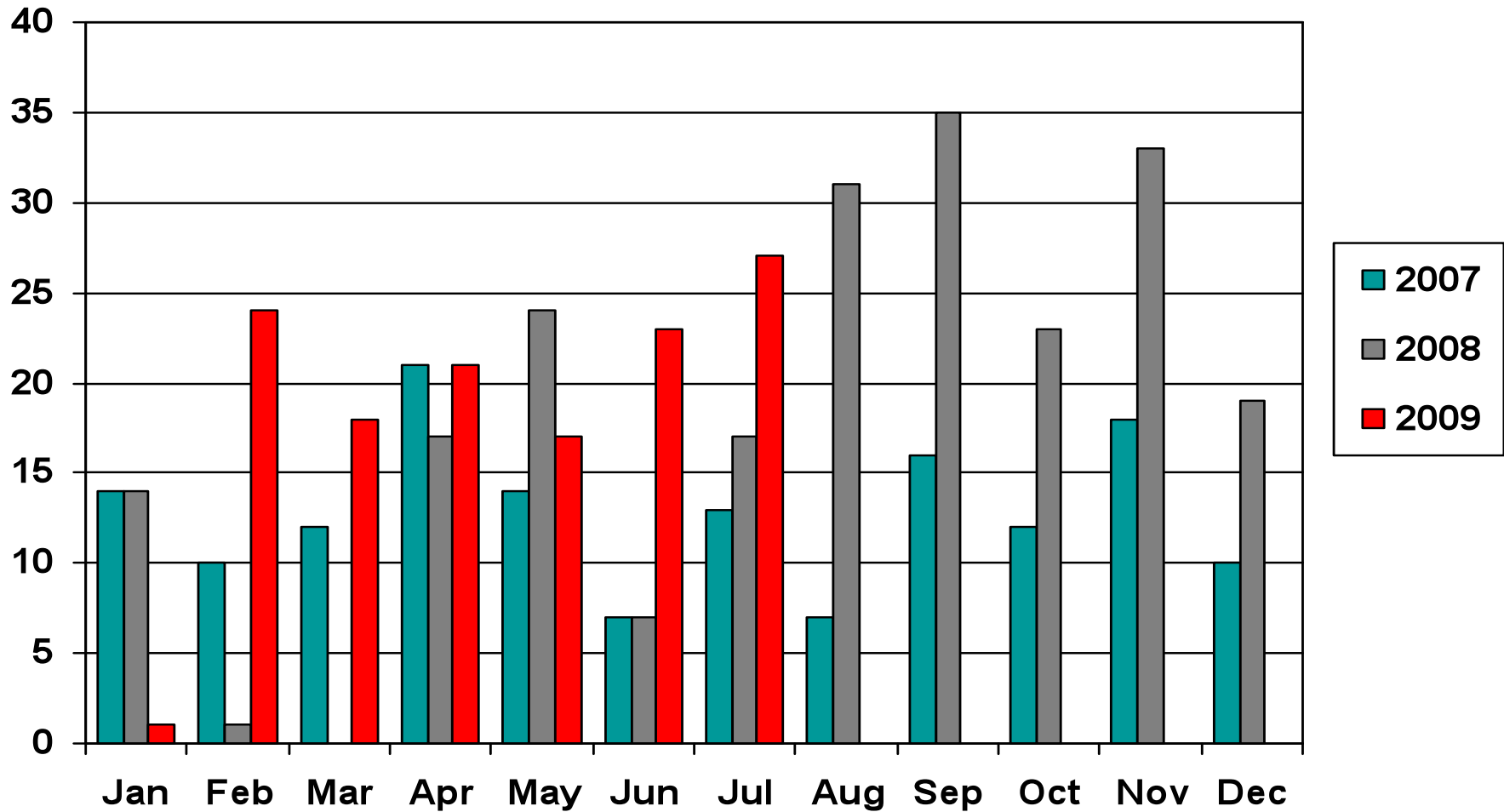
San Angelo City Bank Deposits

(in thousands of dollars)

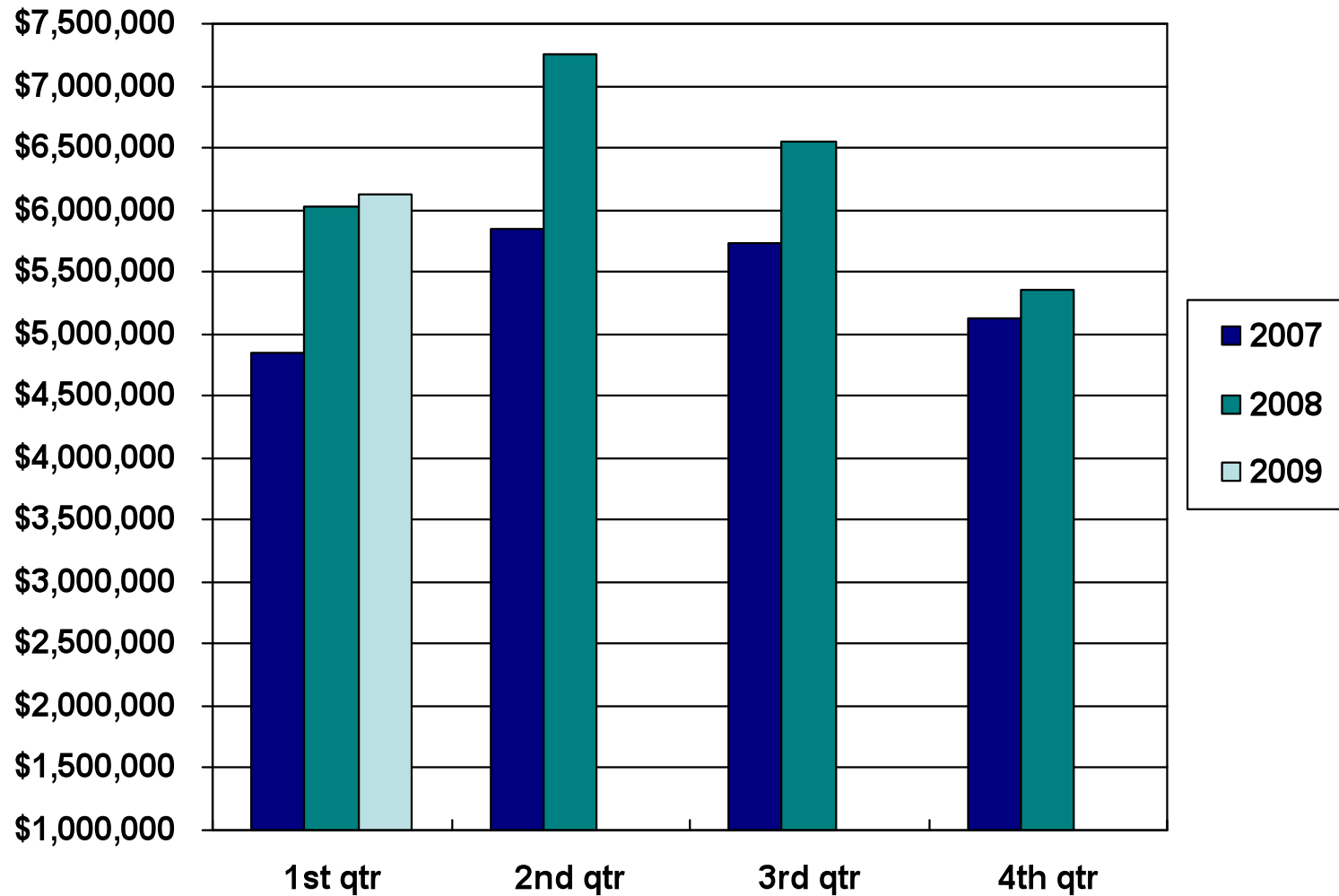


Source: Federal Deposit Insurance Corporation

Tom Green County Foreclosures

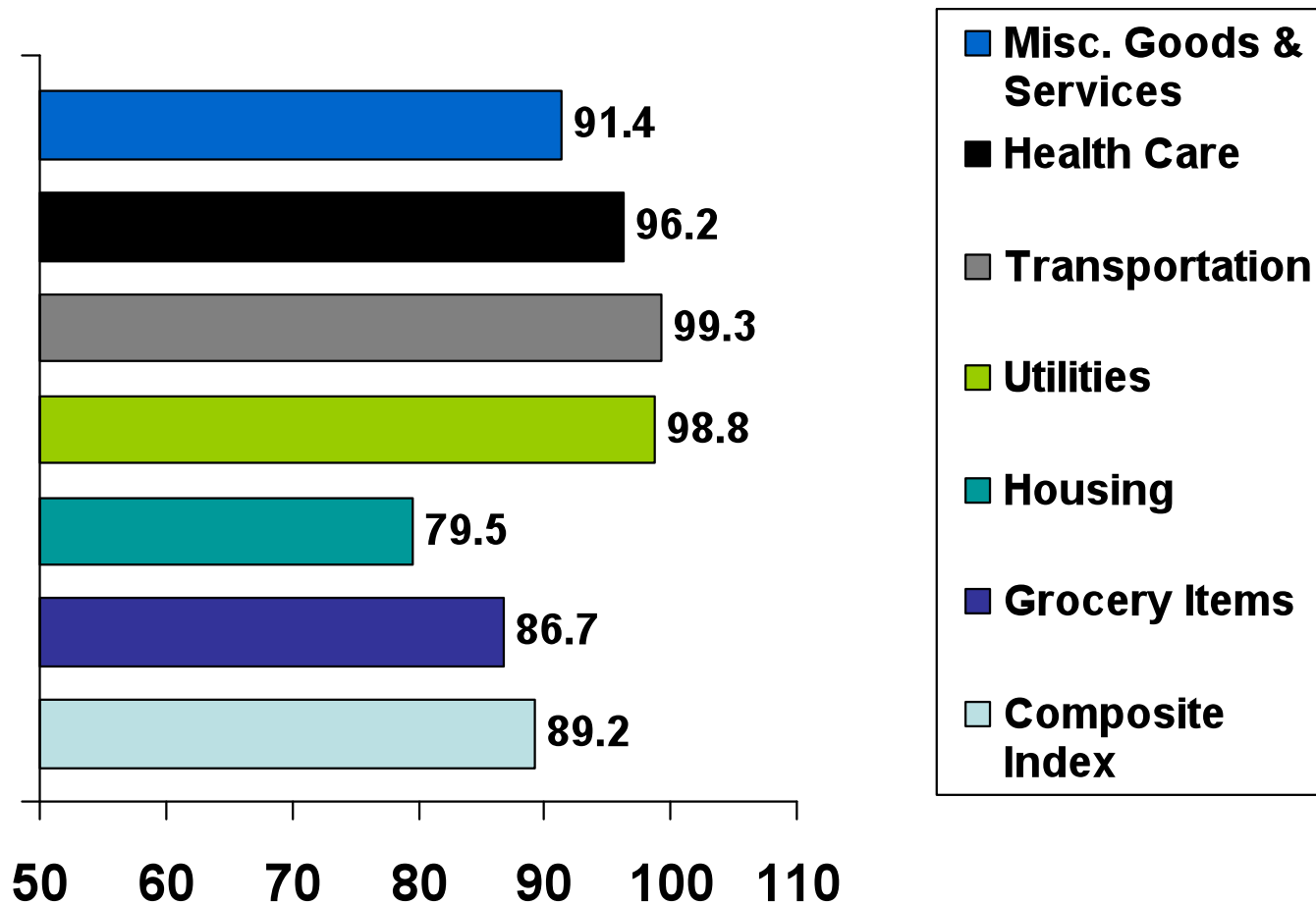


San Angelo City Hotel Receipts



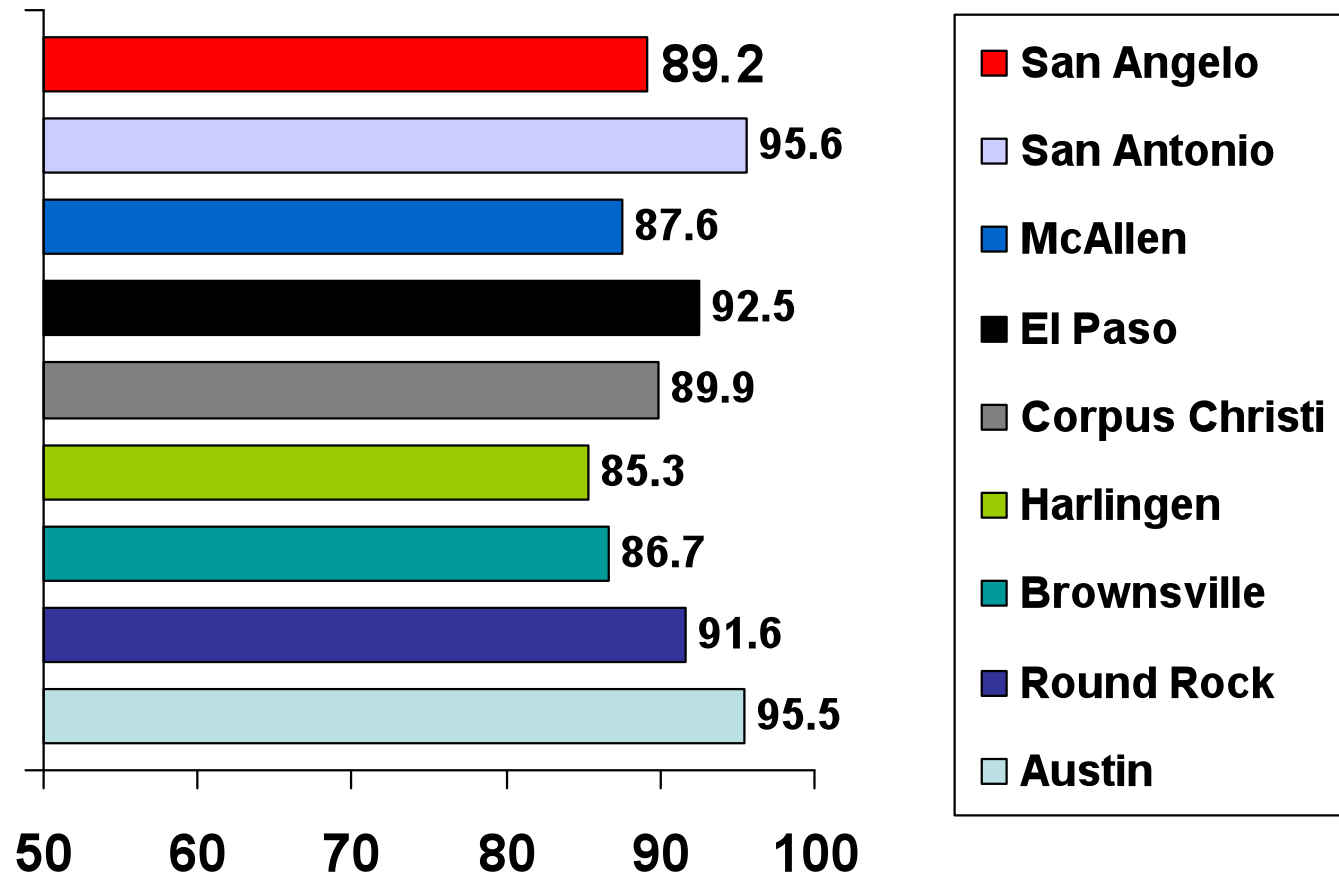
San Angelo Cost of Living Index

2008 Annual Average



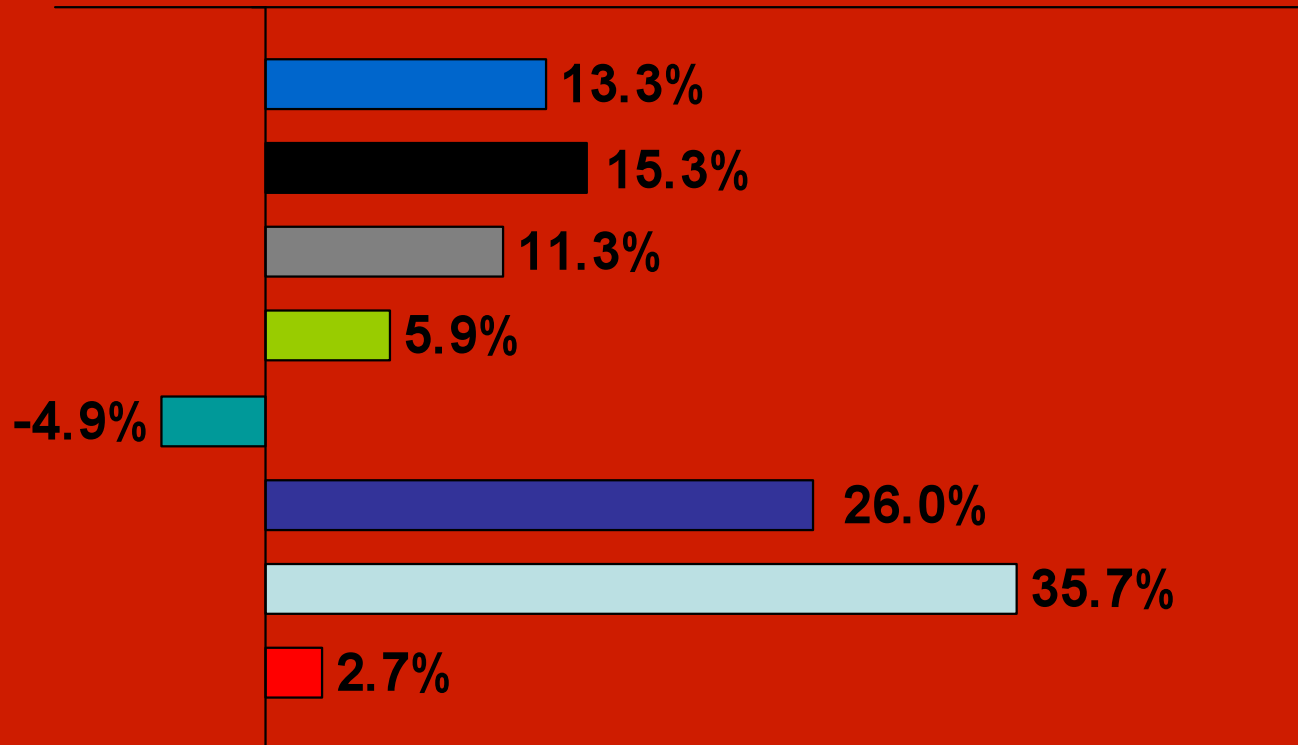
Cost of Living Composite Index

2008 Annual Average



Area MSA Exports

Percentage Change from 2006 to 2007



■ Austin-Round Rock

■ Corpus Christi

■ Laredo

■ San Antonio

■ Brownsville-Harlingen

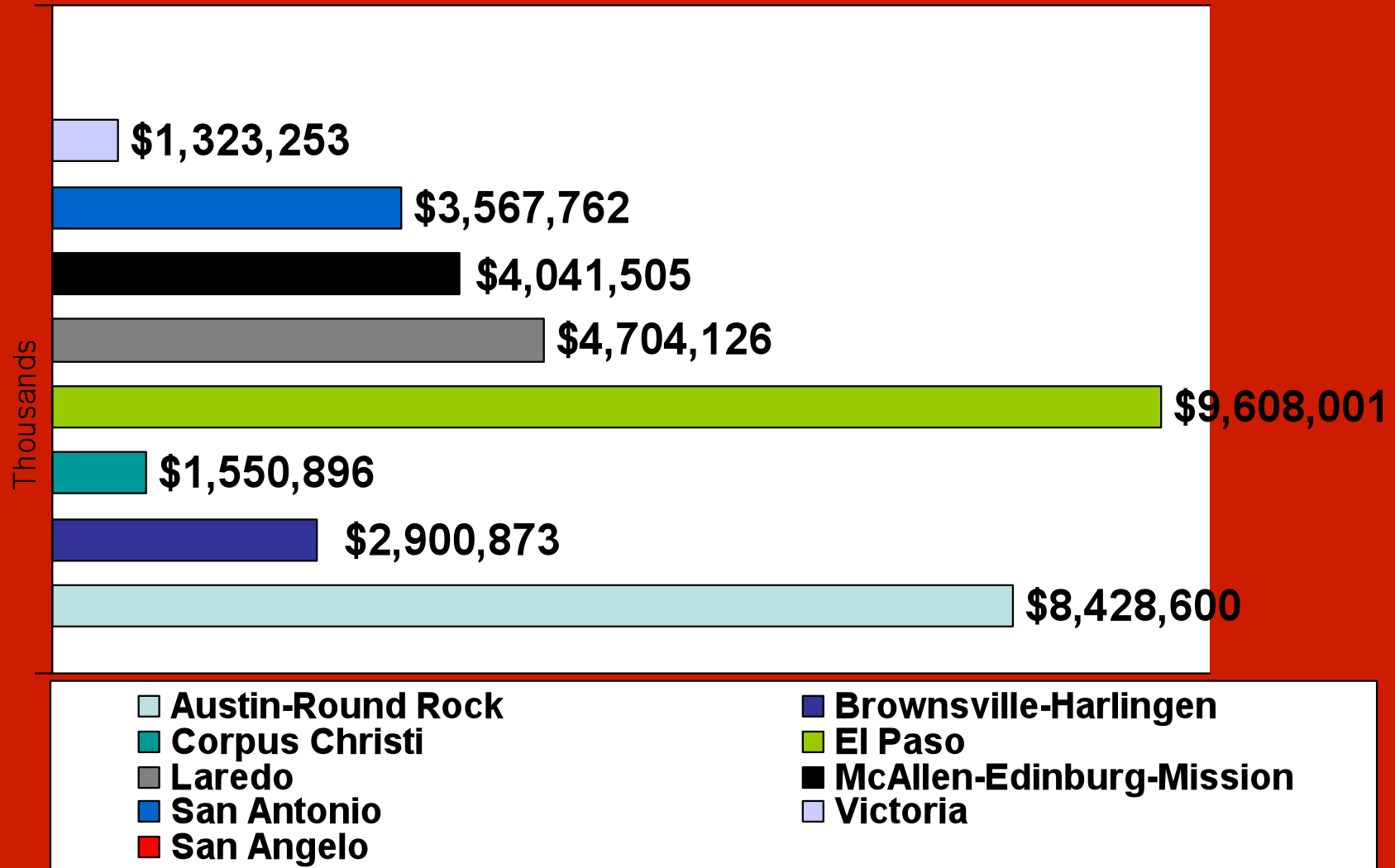
■ El Paso

■ McAllen-Edinburg-Mission

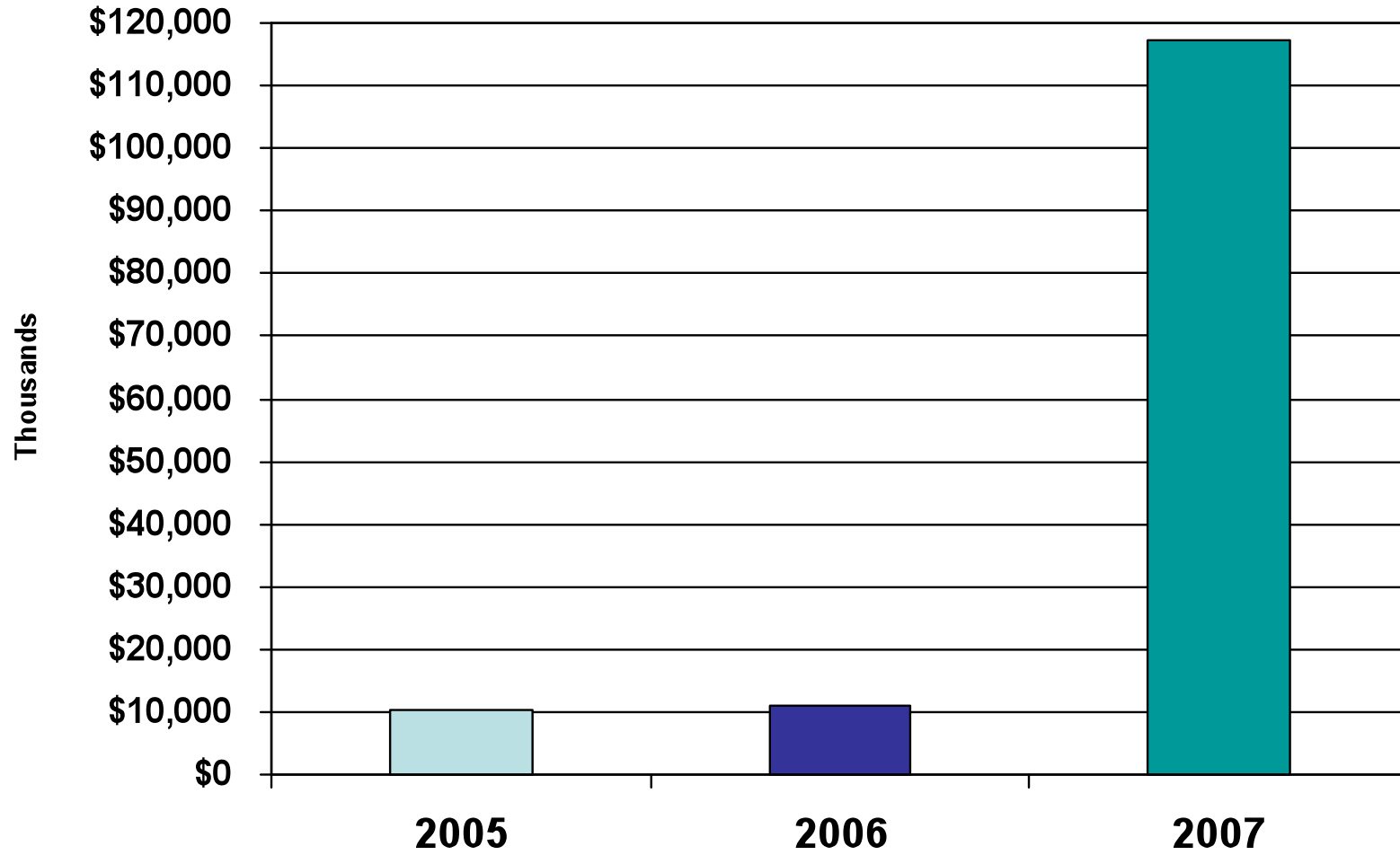
■ Victoria

Area MSA Exports

2007

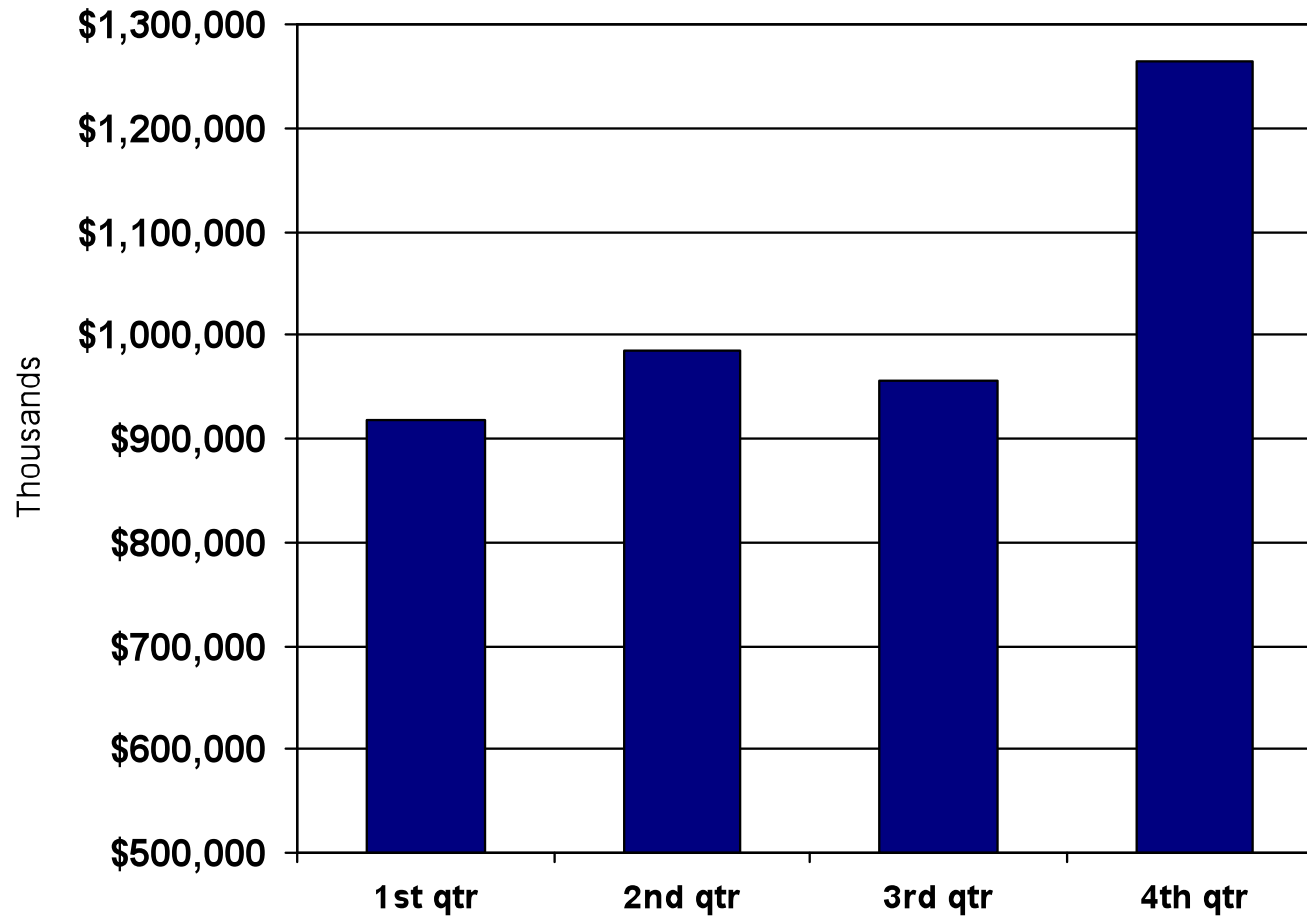


San Angelo MSA Exports

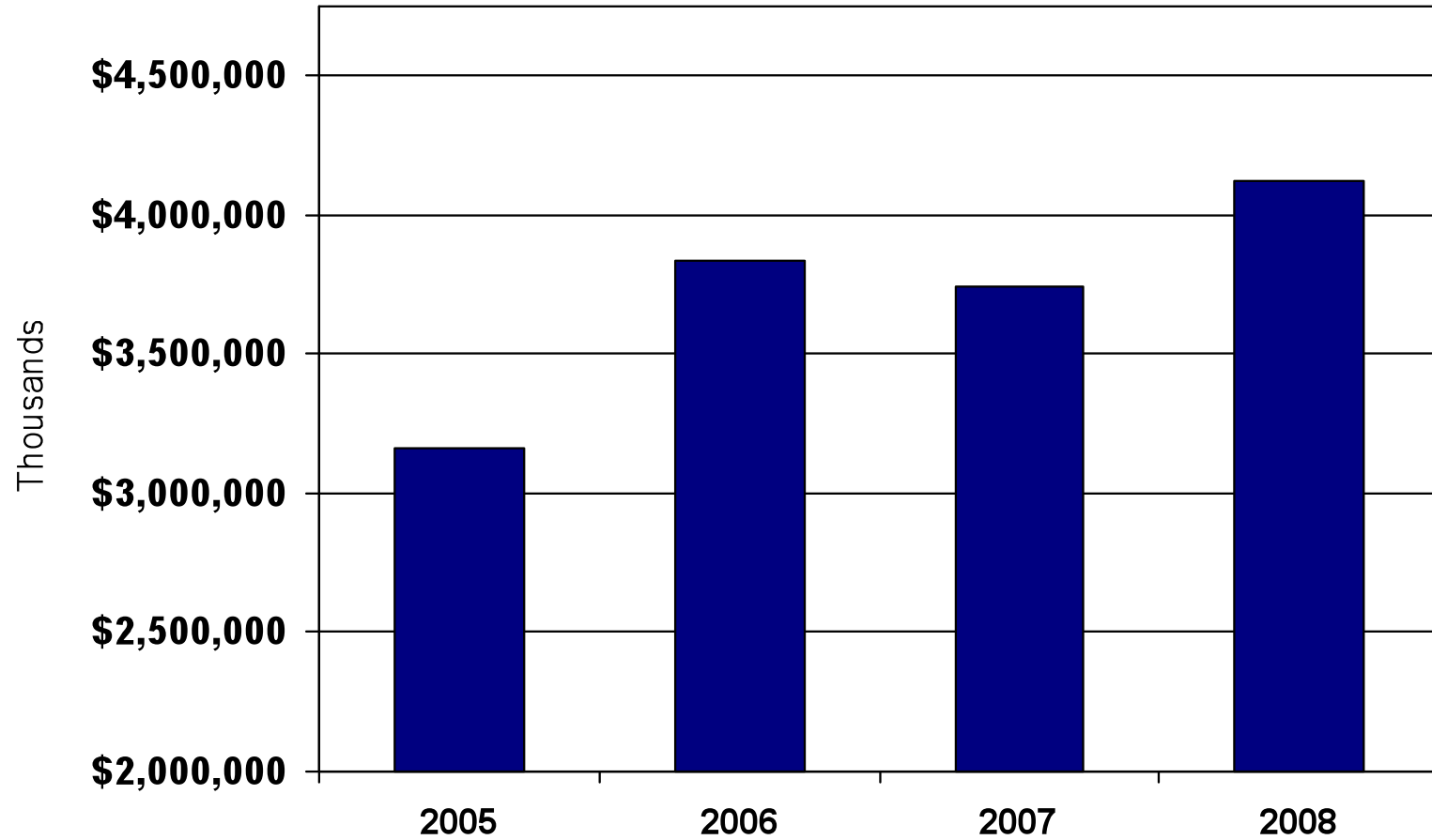


Source: U.S. Department of Commerce International Trade Administration

San Angelo MSA 2008 Gross Sales

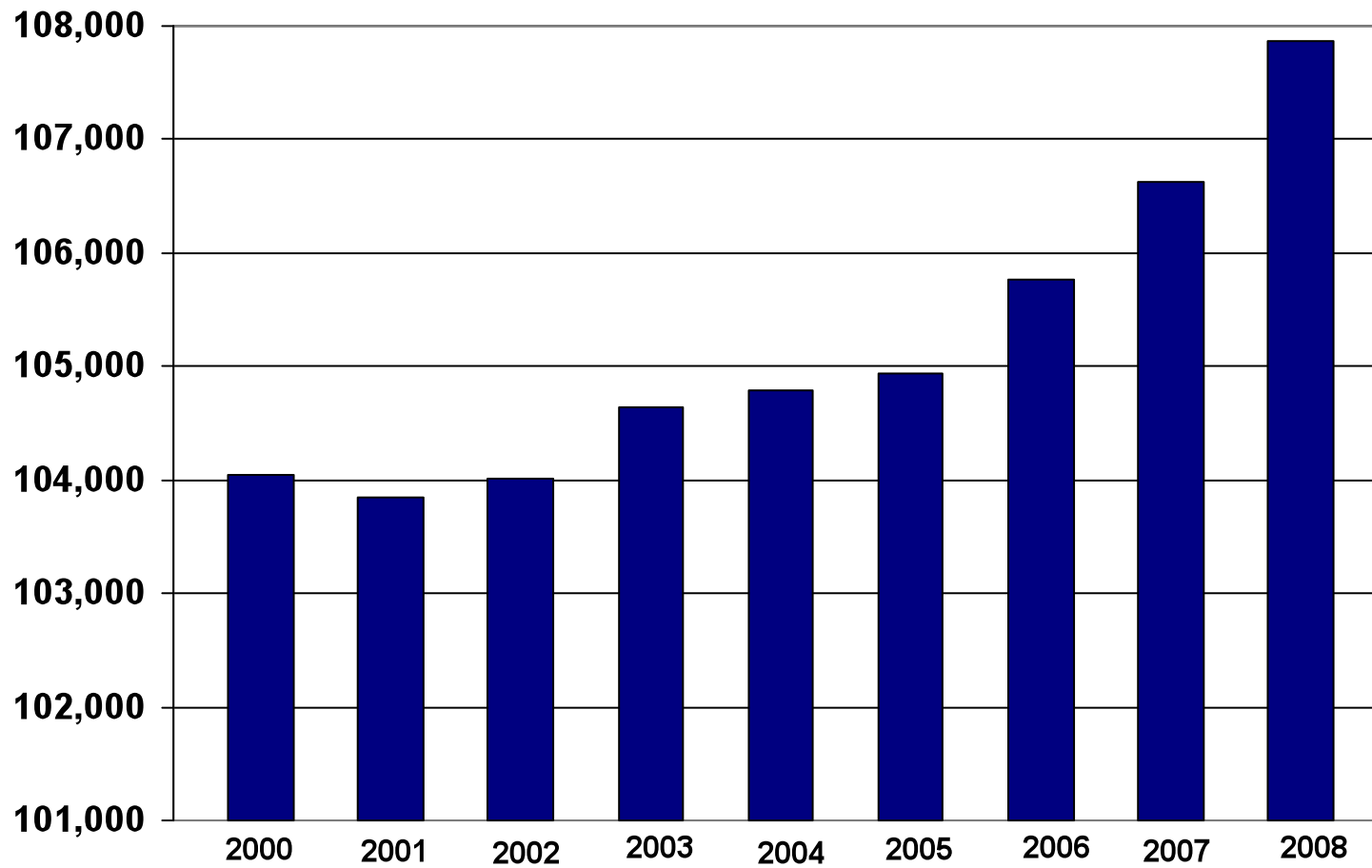


San Angelo MSA Gross Sales



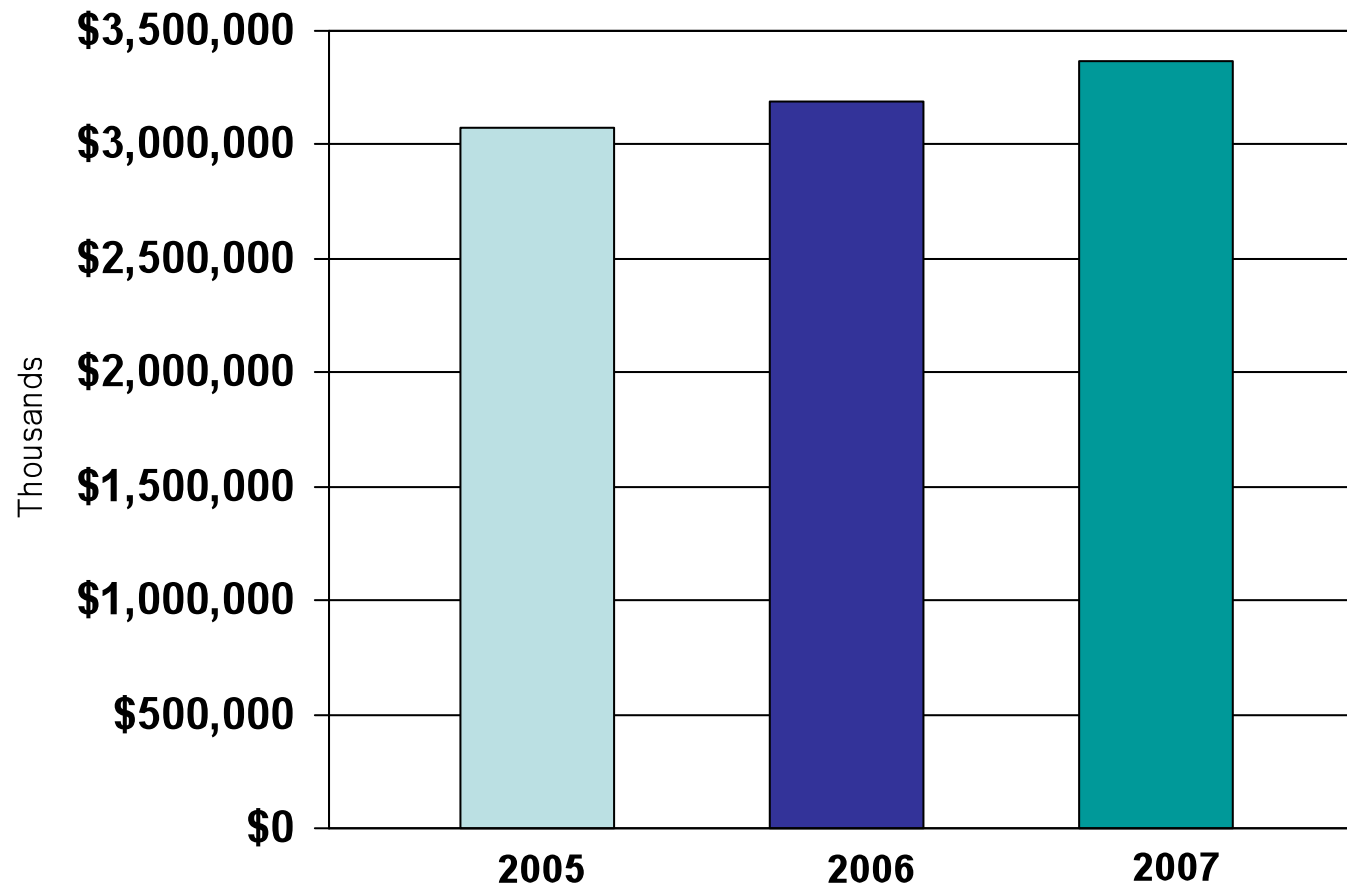
Source: Texas State Comptroller

Tom Green County Population



Source: U.S. Census Population Estimates

San Angelo MSA Personal Income

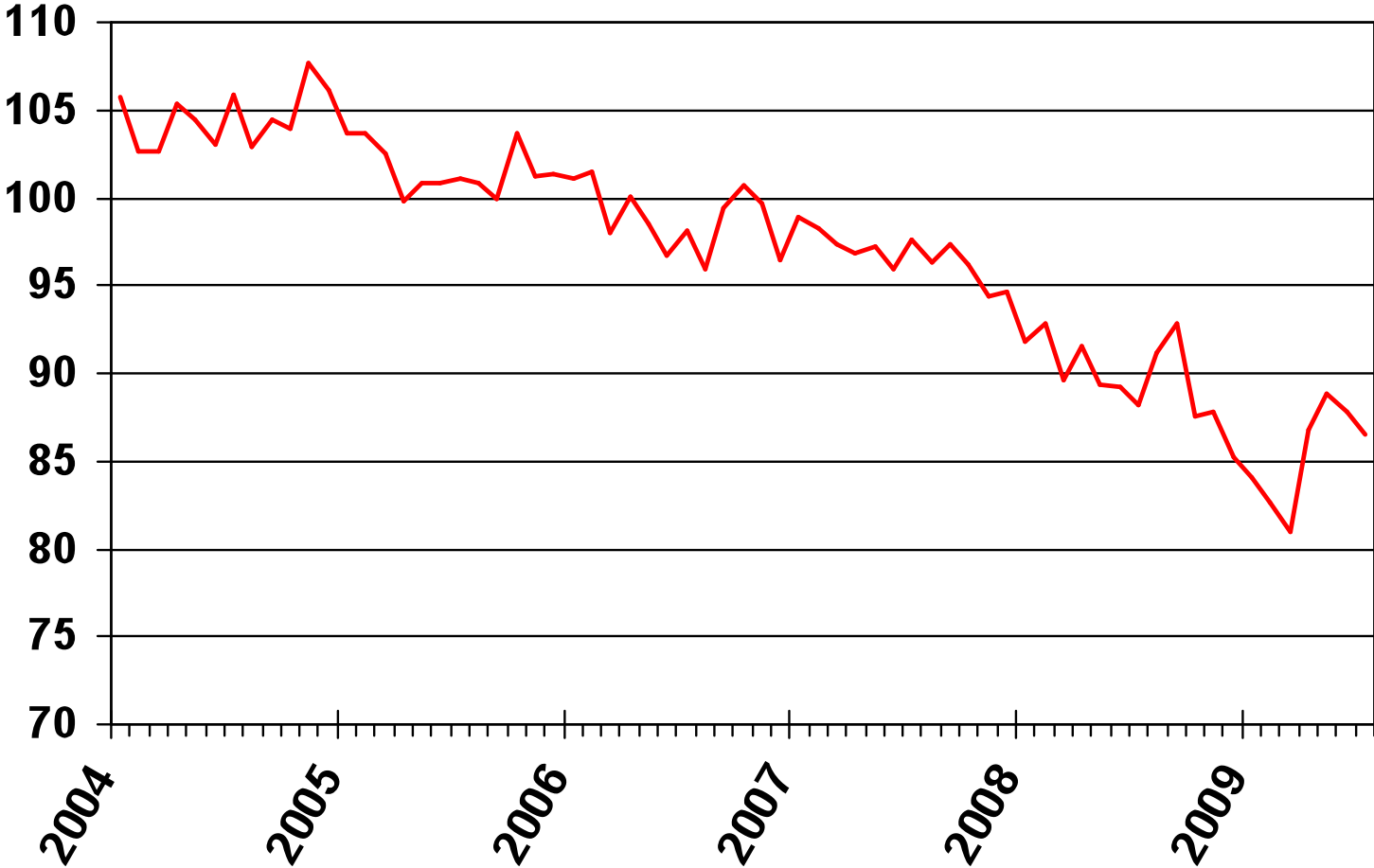


-Percentage change from 2005-2006 is 3.8%

-Percentage change from 2006-2007 is 5.5%

Small Business Optimism Index

Based on Ten Survey Indicators
(Seasonally Adjusted)



Source: NFIB Small Business Economic Trends, August 2009

Most Important Reason for Expansion Outlook

Reason Percent by Expansion Outlook
July 2009

Reason	Good Time	Not Good Time	Uncertain
Economic Conditions	2	55	11
Sales Prospects	1	5	1
Fin. & Interest Rates	1	2	1
Cost of Expansion	0	2	1
Political Climate	0	11	2
Other/Not Available	1	2	1

Outlook for General Business Conditions

Net Percent (“Better” Minus “Worse”) Six Months From Now
(Seasonally Adjusted)

	Jan	Feb	Mar	Apr	May	Jun	Jul	Aug	Sep	Oct	Nov	Dec
2004	41	33	22	34	29	26	37	32	36	30	47	
2005	25	20	16	5	5	16	12	7	3	14	11	37
2006	6	3	-5	-3	-10	-8	-6	-8	2	11	11	12
2007	-1	-2	-7	-8	-3	-5	-1	0	2	-2	-10	-4
2008	-22	-9	-23	-12	-12	-19	-17	4	14	-4	-2	-13
2009	-12	-21	-22	2	12	7	-3					

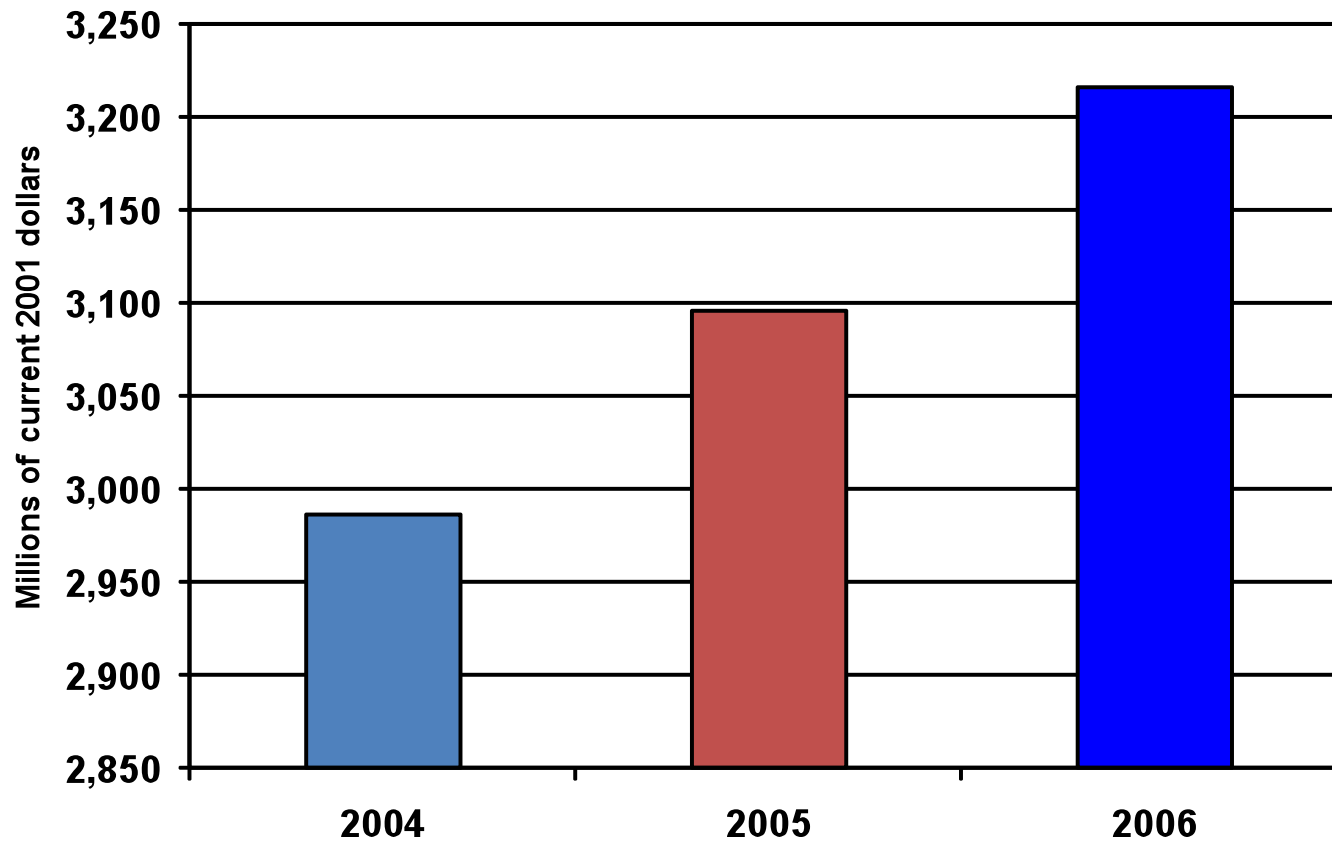
Single Most Important Problem

July 2009

Problem	Current	One Year Ago	Survey High	Survey Low
Taxes	22	17	32	8
Inflation	3	20	41	0
Poor Sales	32	16	33	2
Fin. & Interest Rates	4	3	37	2
Cost of Labor	4	5	9	2
Govt. Reqs. & Red Tape	12	8	27	4
Comp. From Large Bus.	5	6	14	4
Quality of Labor	4	10	23	3
Cost/Avail. of Insurance	9	11	29	4
Other	5	4	31	2

San Angelo MSA GDP

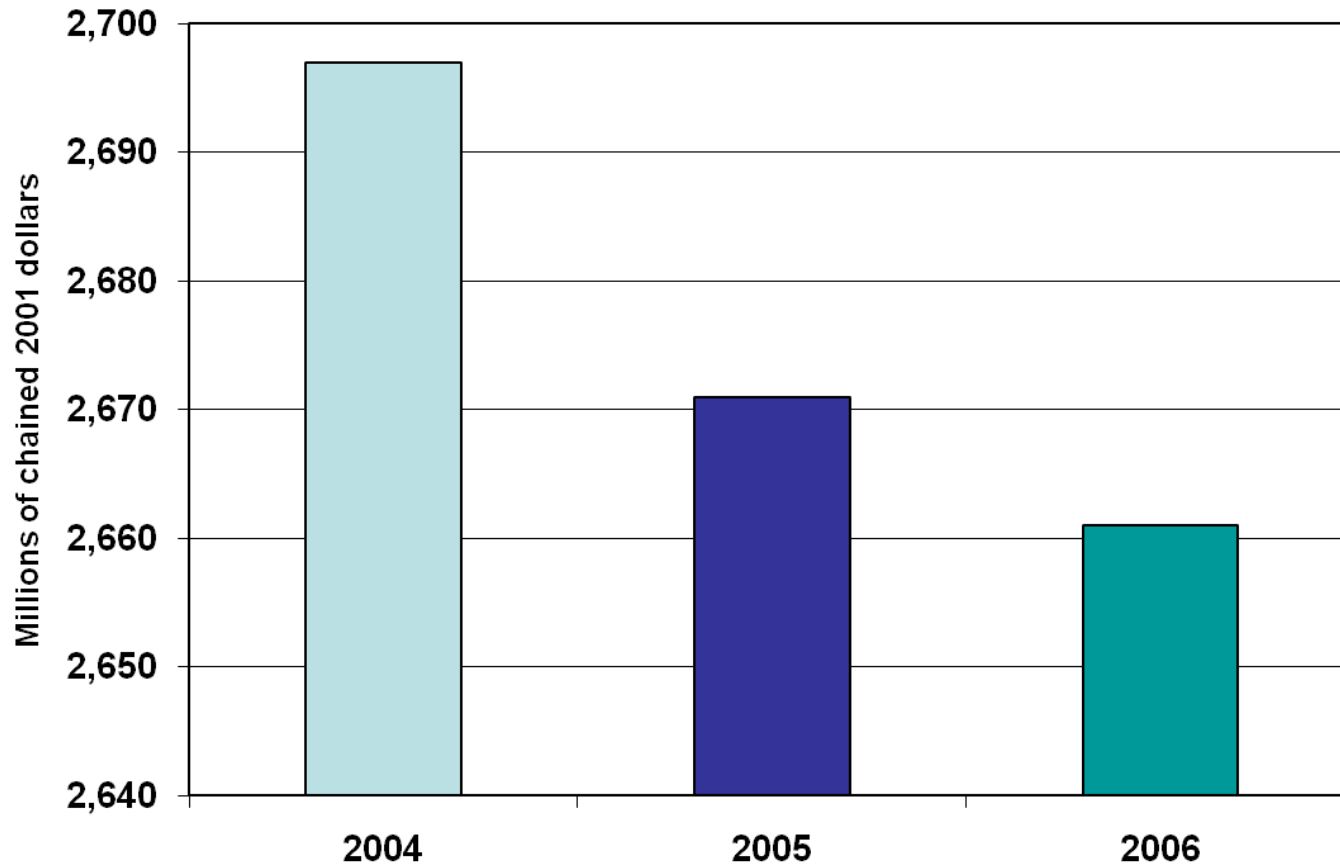
(all industry total)



Source: Bureau of Economic Analysis

San Angelo MSA Real GDP

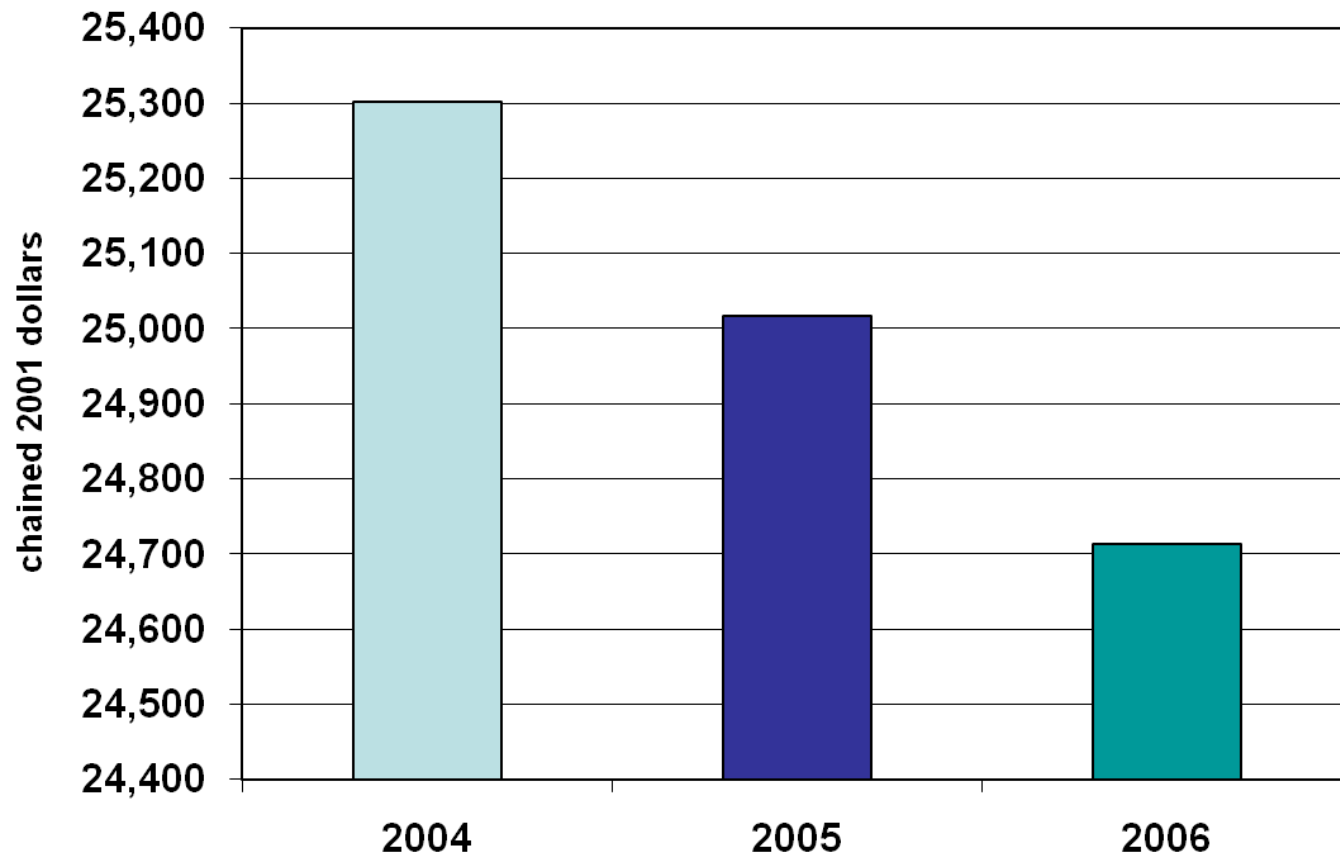
(all industry total)



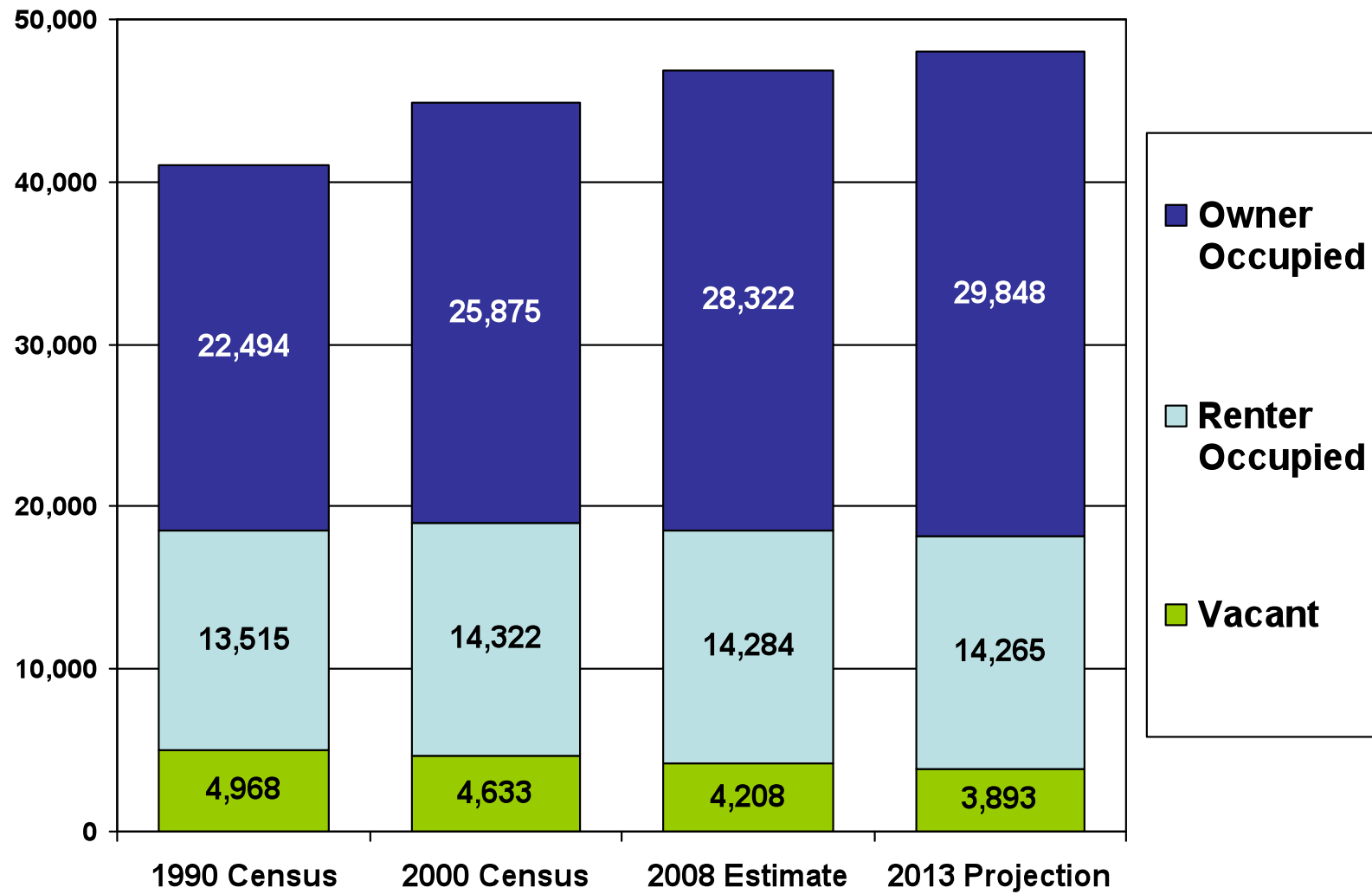
Source: Bureau of Economic Analysis

San Angelo MSA Per Capita Real GDP

(all industry total)



San Angelo MSA Housing Units



Source: SBDC National Information Clearinghouse