

# General Area Statistics for Webb County

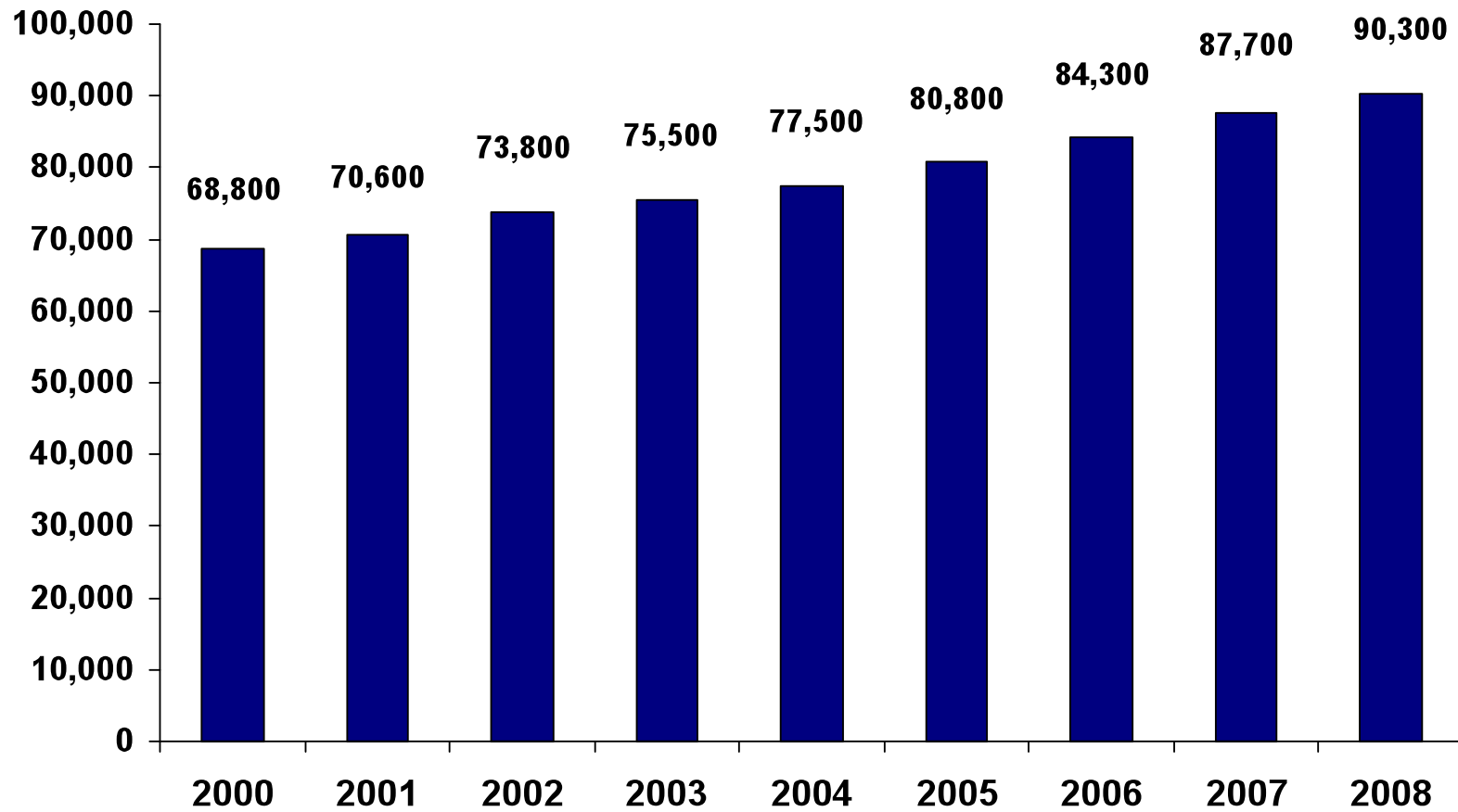
Population <sup>1</sup>	236,941
Average annual wage <sup>2</sup>	\$26,230
Number in labor force <sup>3</sup>	96,821
Number employed <sup>3</sup>	87,741
Percent unemployed <sup>3</sup>	9.4%
Median household income <sup>4</sup>	\$33,905
Median housing value <sup>4</sup>	\$104,800
Median gross rent <sup>4</sup>	\$627
Per Capita Income <sup>4</sup>	\$12,877
Poverty rate <sup>4</sup>	31.1%
High school graduates <sup>4</sup>	60.4%
Bachelor's degree or higher <sup>4</sup>	19.3%

Source: <sup>1</sup>U.S. Census Bureau population estimates, July 2008, <sup>2</sup>Bureau of Labor Statistics, 2008 preliminary (private sector only),

<sup>3</sup>Bureau of Labor Statistics, June 2009, <sup>4</sup>American Community Survey, 2007

# Laredo MSA Nonfarm Employment

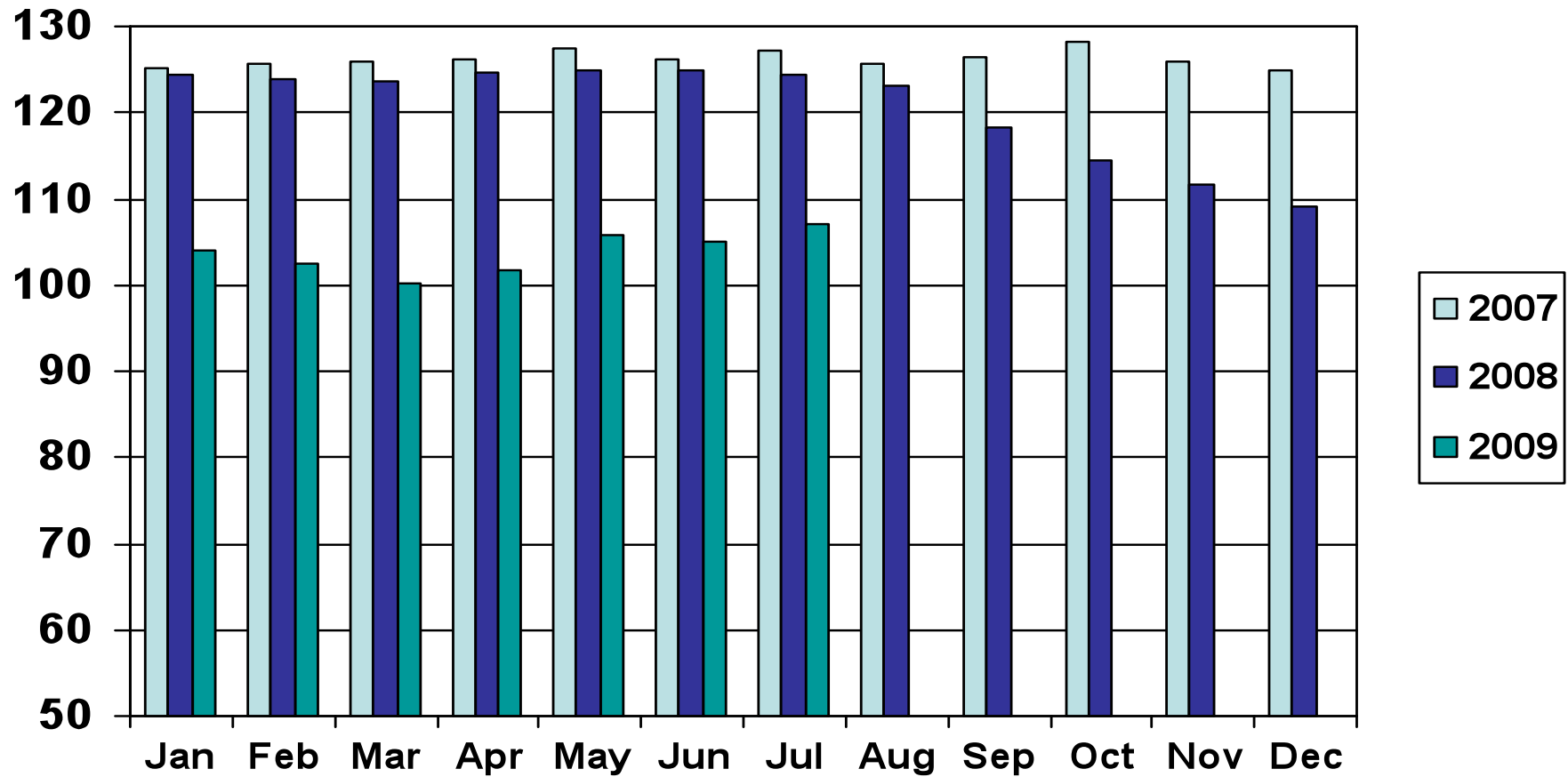
Not Seasonally Adjusted



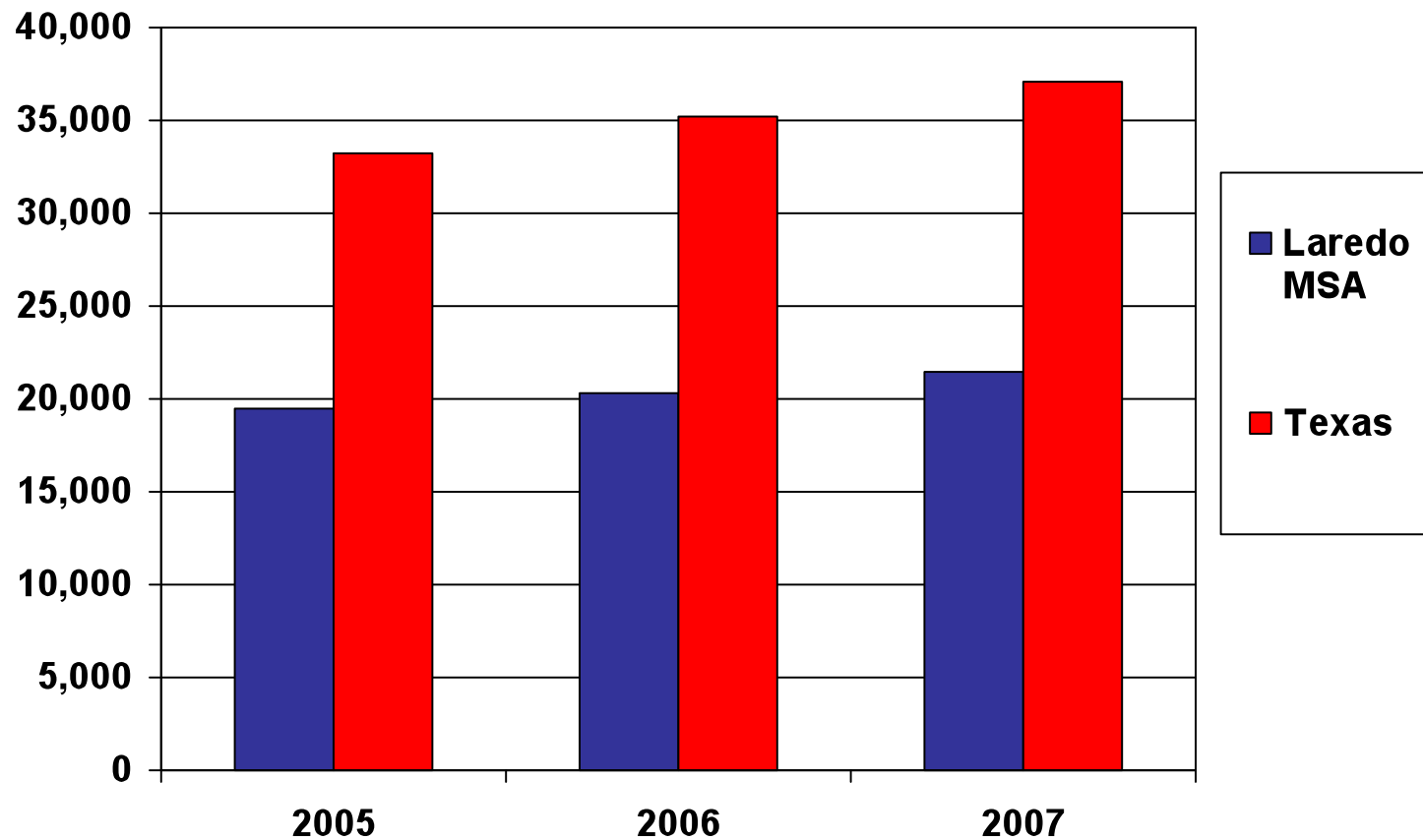
Source: Texas Workforce Commission's Labor Market and Career Information Department

# Texas Index of Leading Indicators

## Seasonally Adjusted



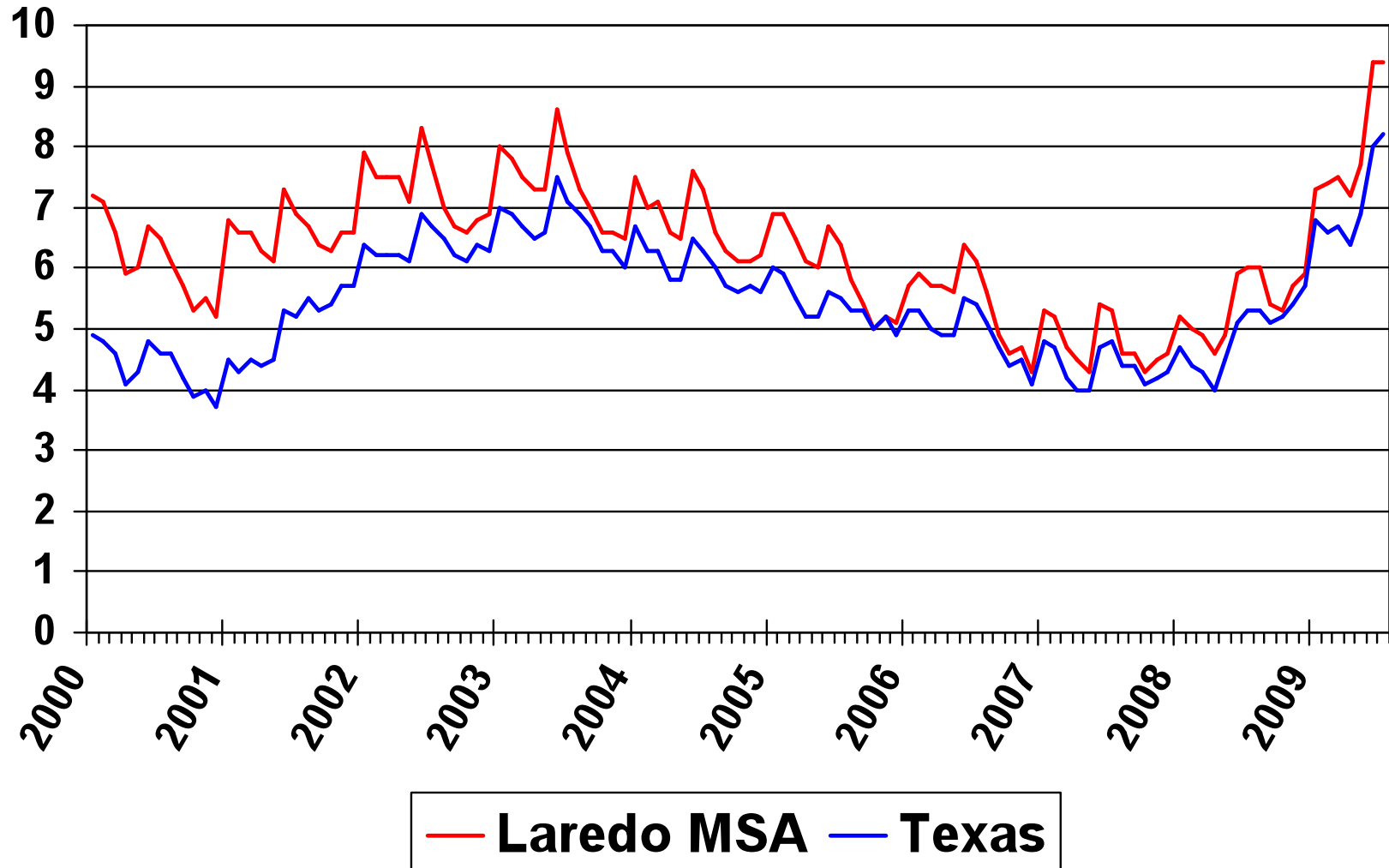
# Laredo MSA Per Capita Personal Income



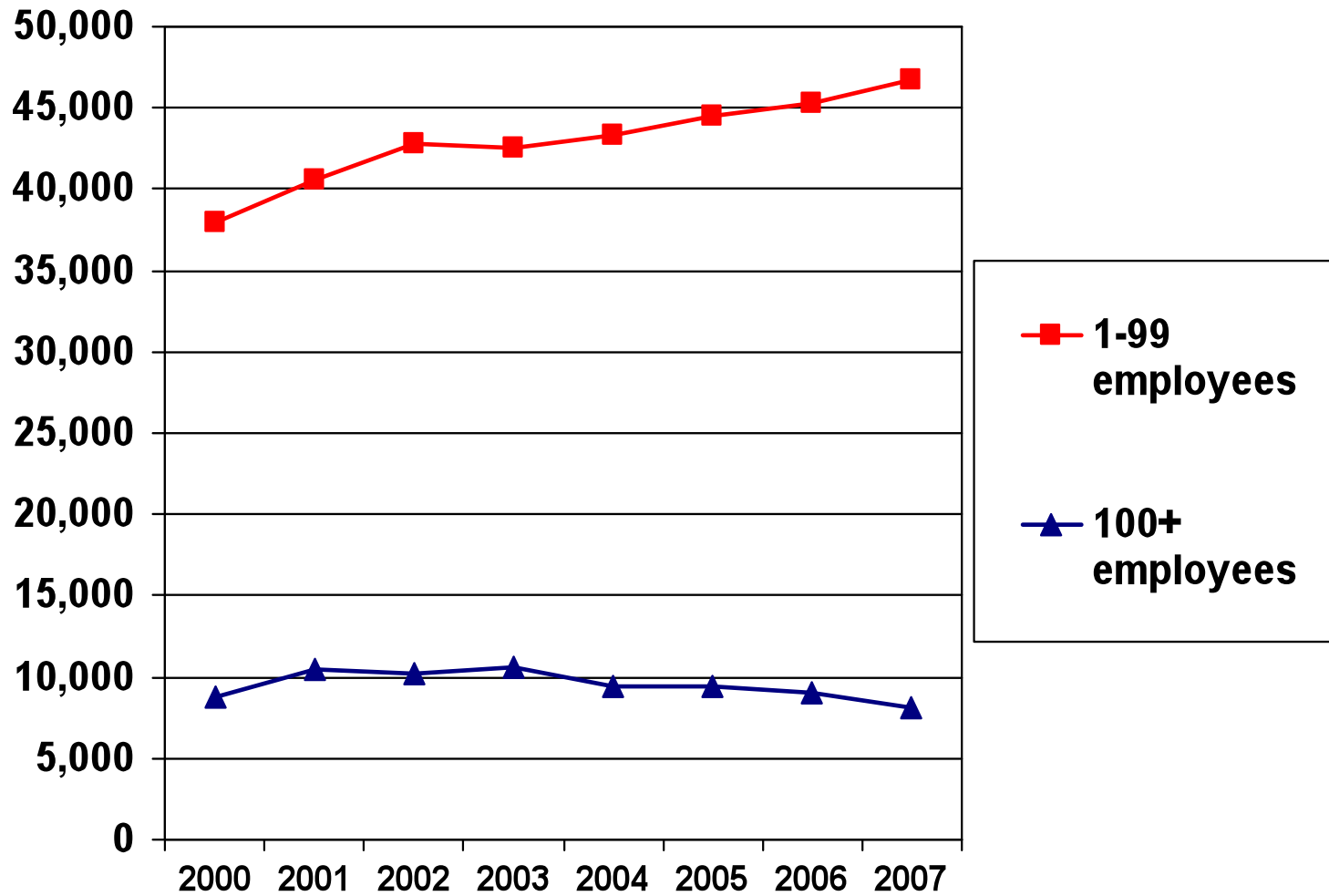
- Laredo MSA percentage change from 2005-2006 is 4.0%.
- Laredo MSA percentage change from 2006-2007 is 5.7%.

# Unemployment Rate

(Not Seasonally Adjusted)

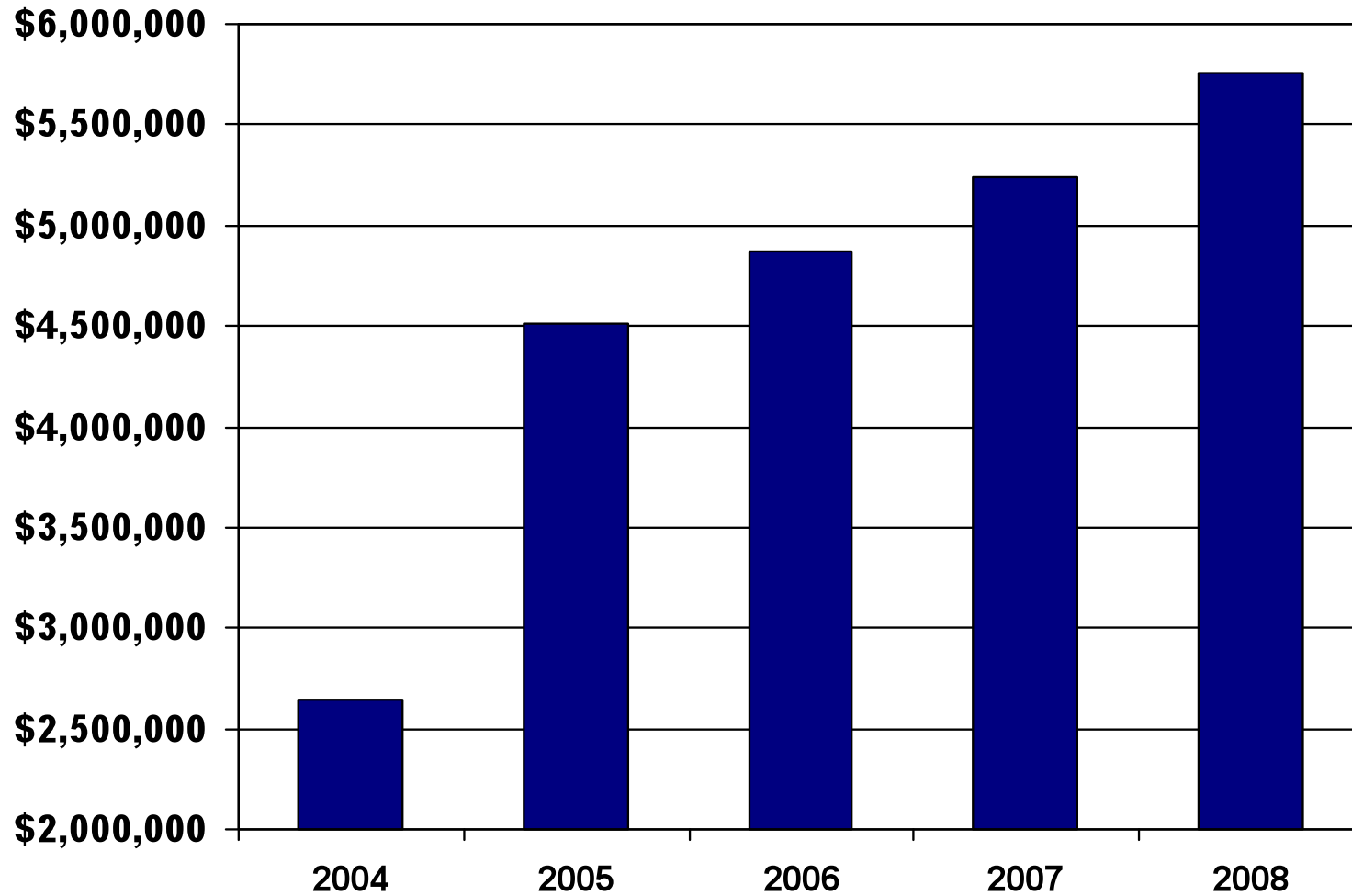


# Laredo MSA Job Growth



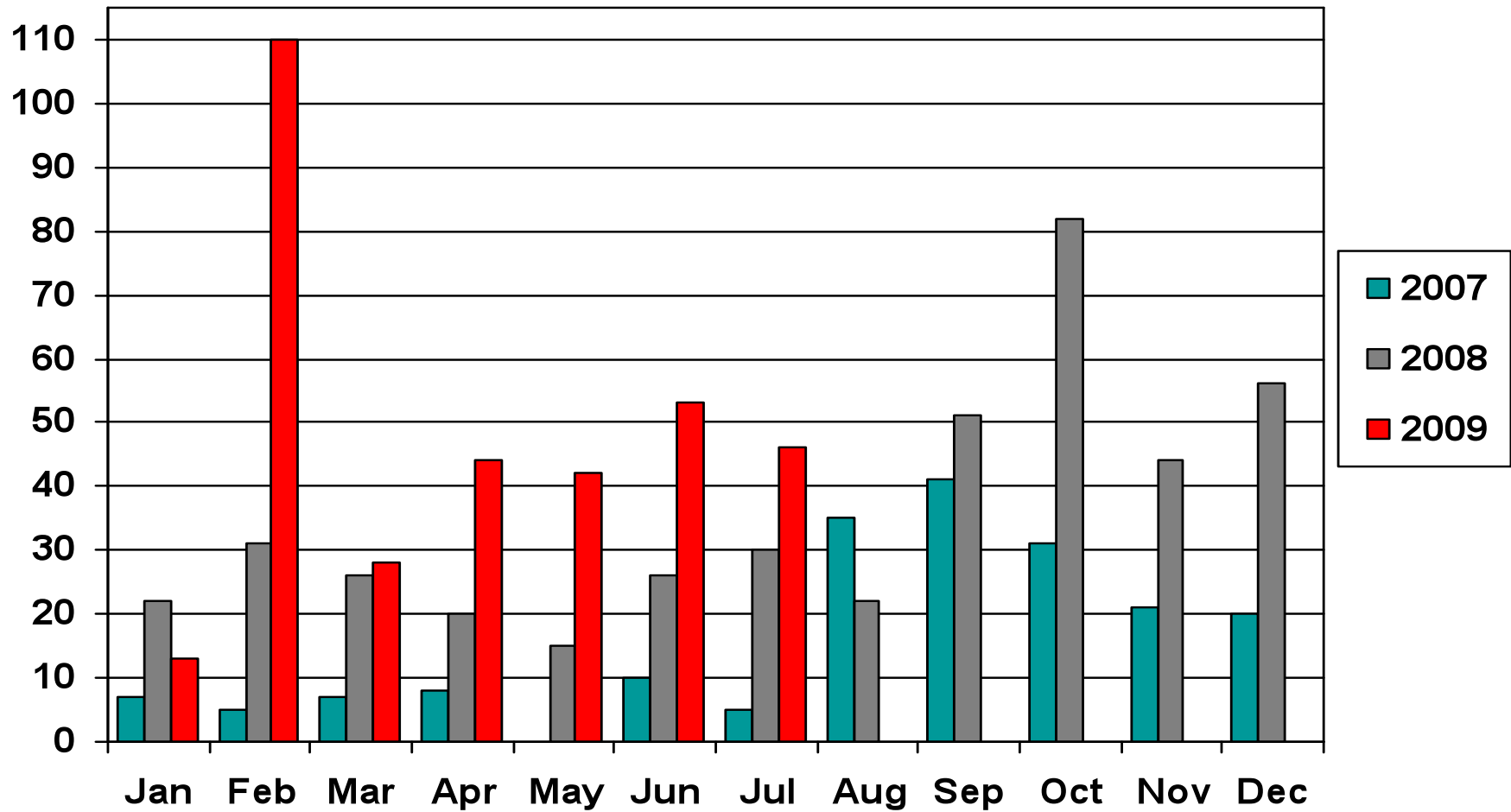
# Laredo City Bank Deposits

(in thousands of dollars)

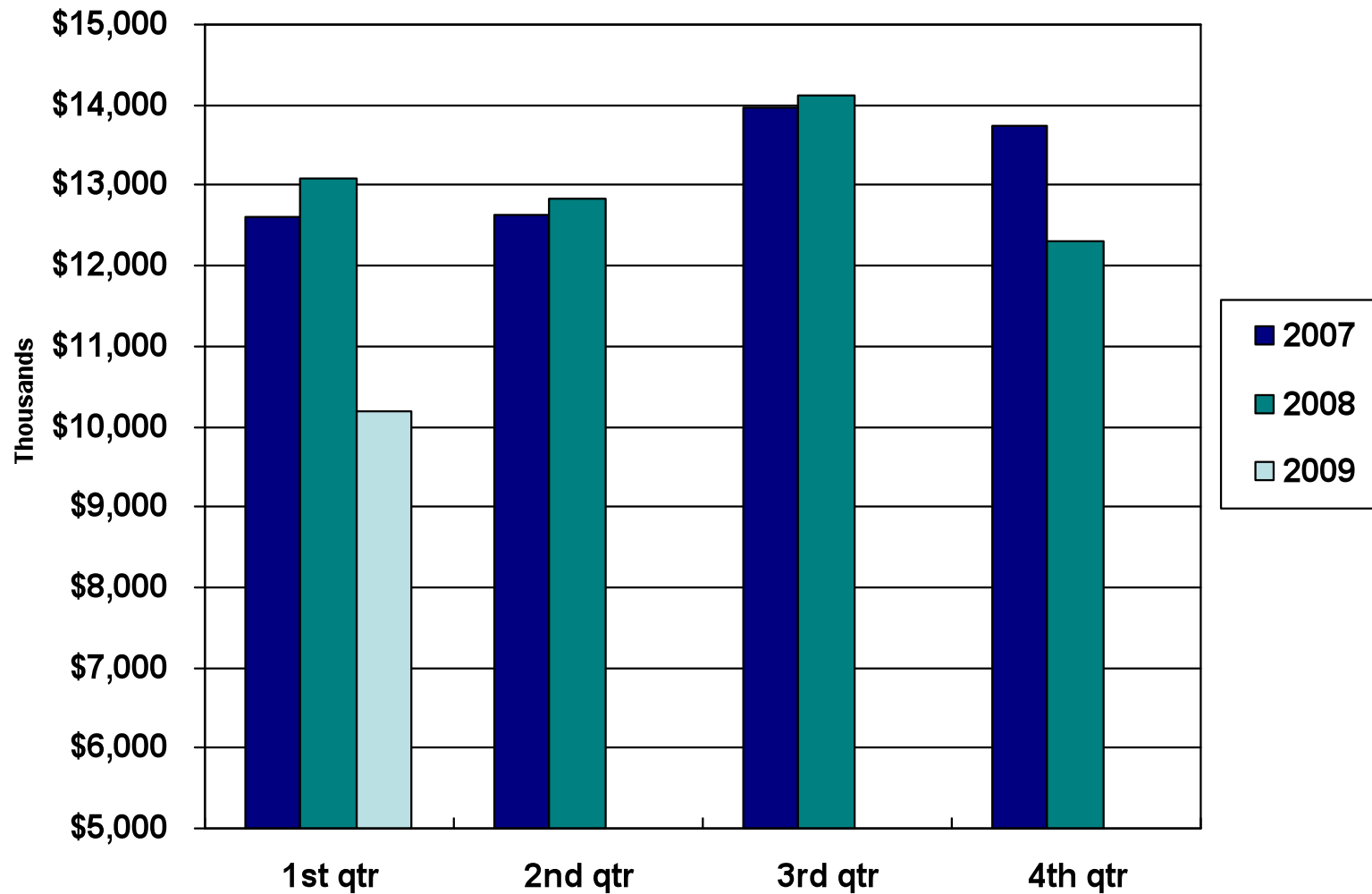


Source: Federal Deposit Insurance Corporation

# Webb County Foreclosures

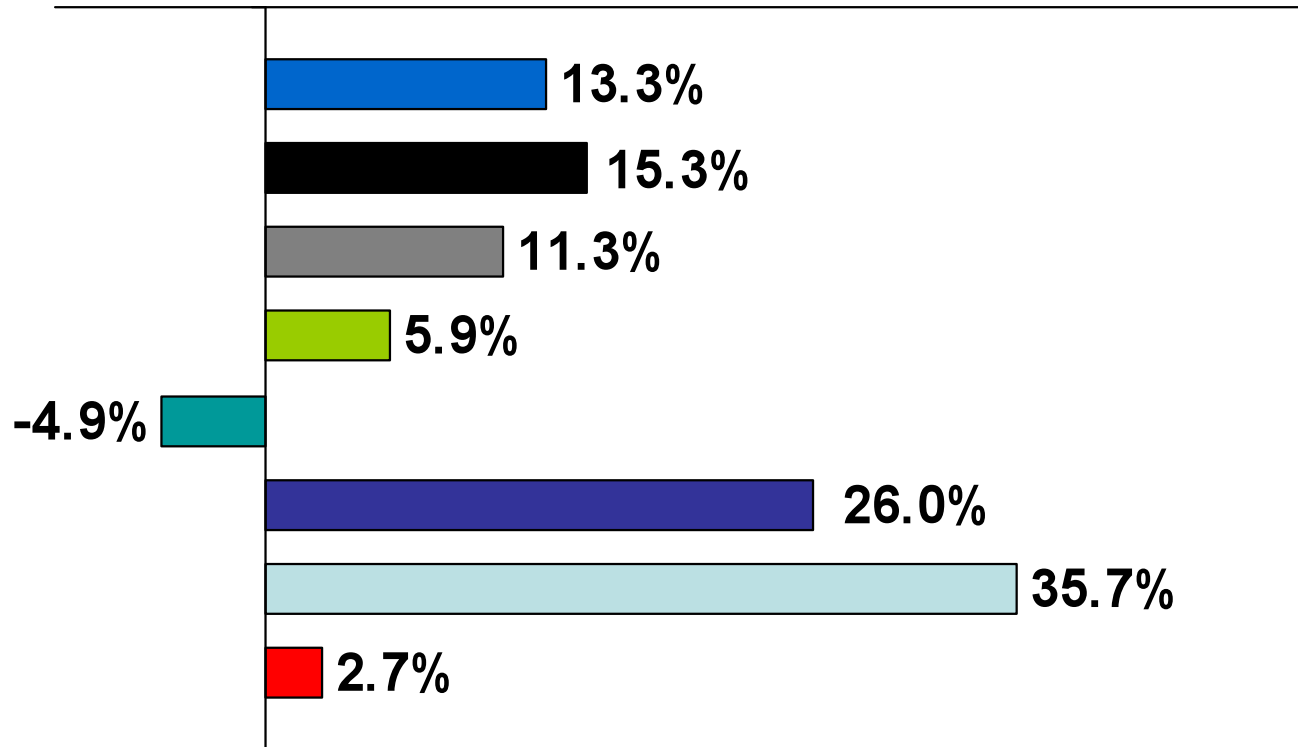


# Laredo City Hotel Receipts



# Area MSA Exports

Percentage Change from 2006 to 2007



**■ Austin-Round Rock**

**■ Corpus Christi**

**■ Laredo**

**■ San Antonio**

**■ Brownsville-Harlingen**

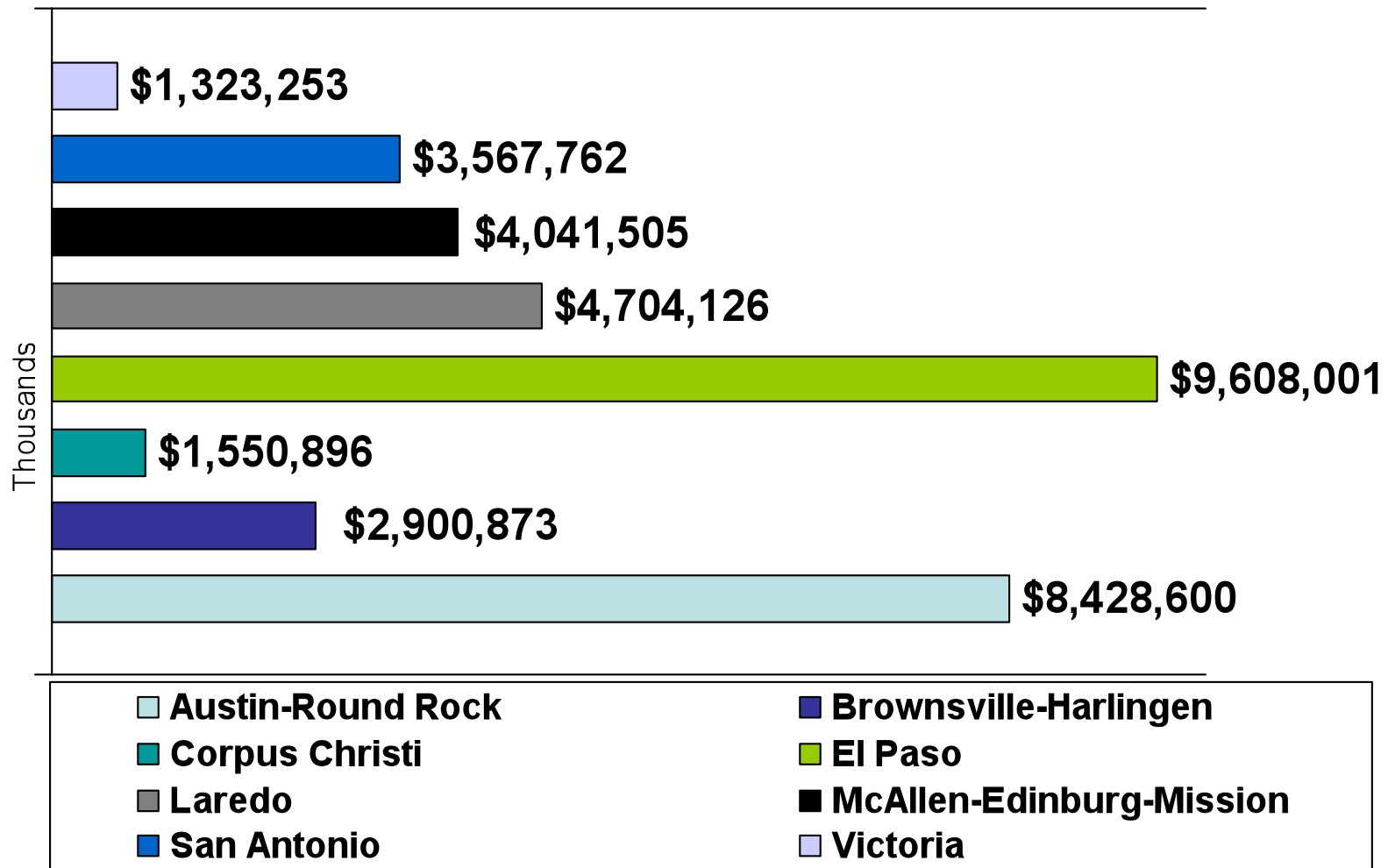
**■ El Paso**

**■ McAllen-Edinburg-Mission**

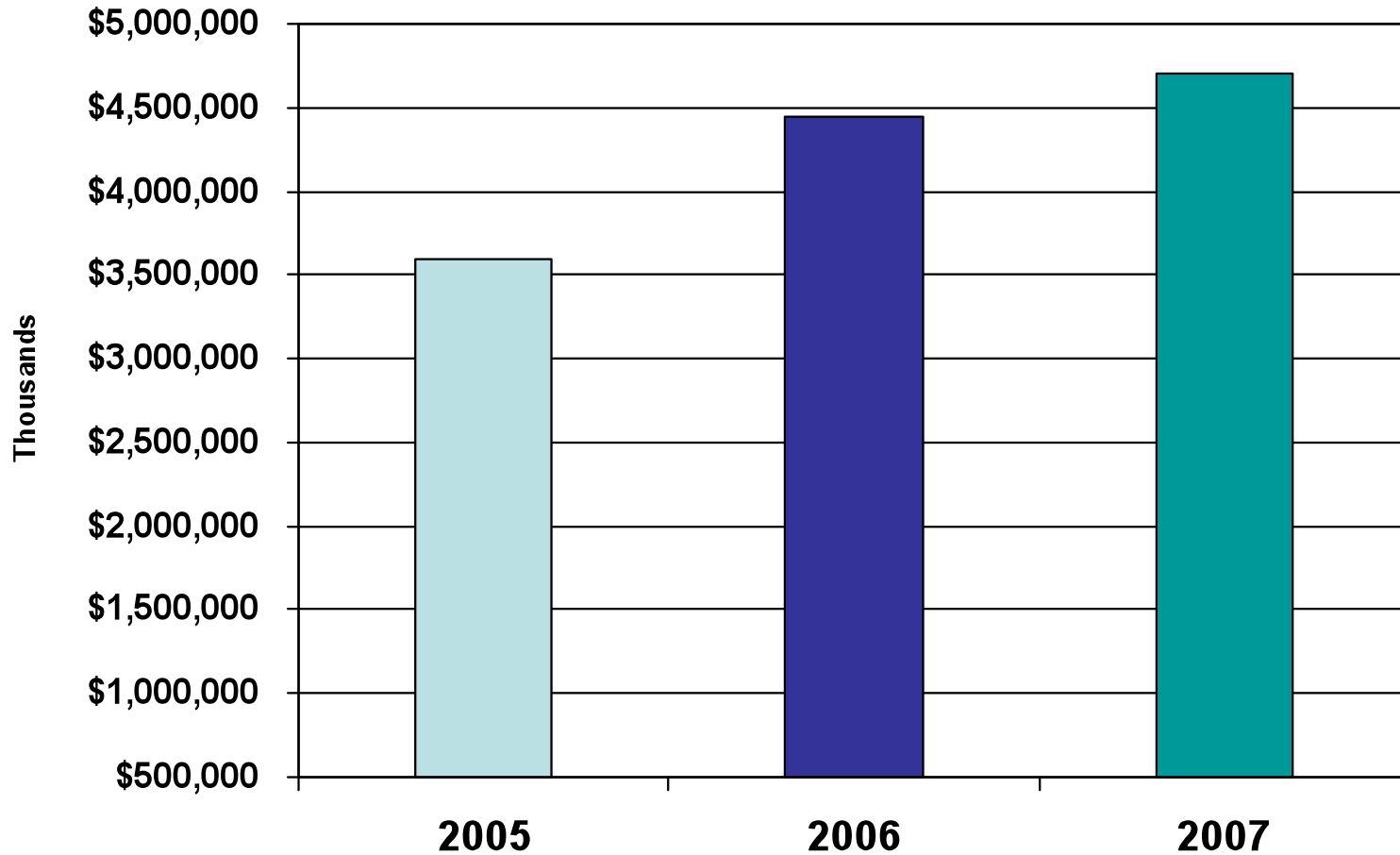
**■ Victoria**

# Area MSA Exports

## 2007

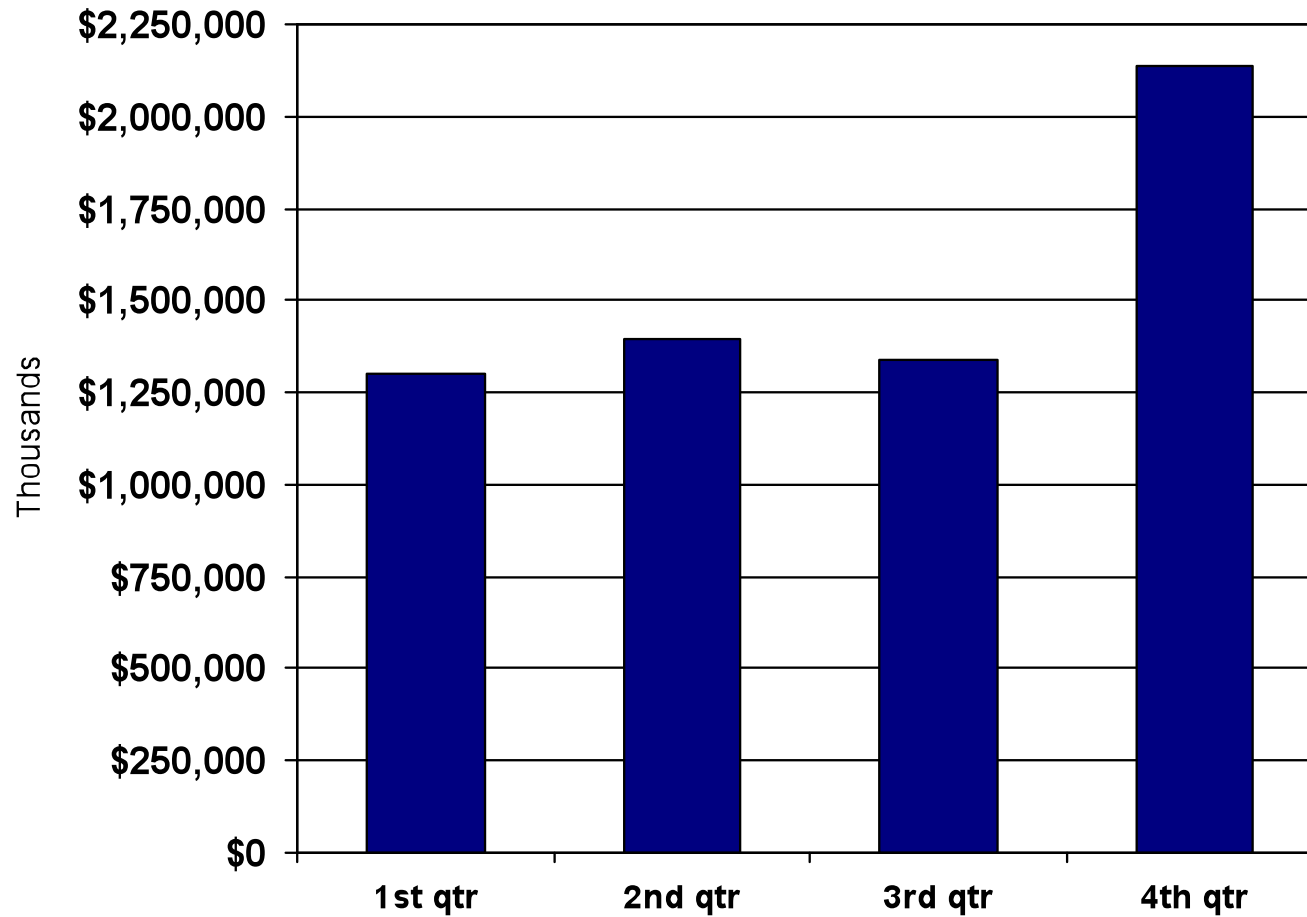


# Laredo MSA Exports

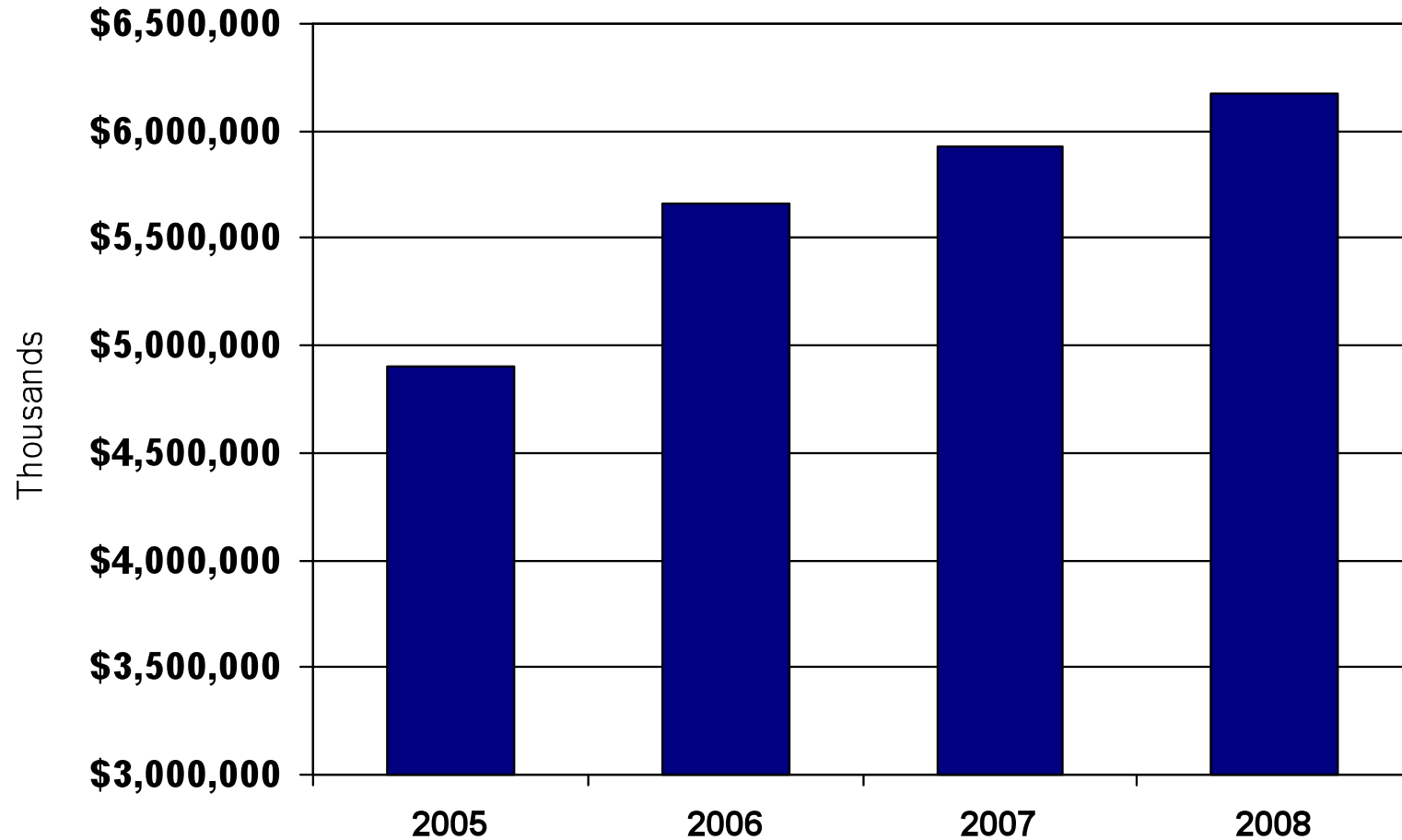


Source: U.S. Department of Commerce International Trade Administration

# Laredo MSA 2008 Gross Sales

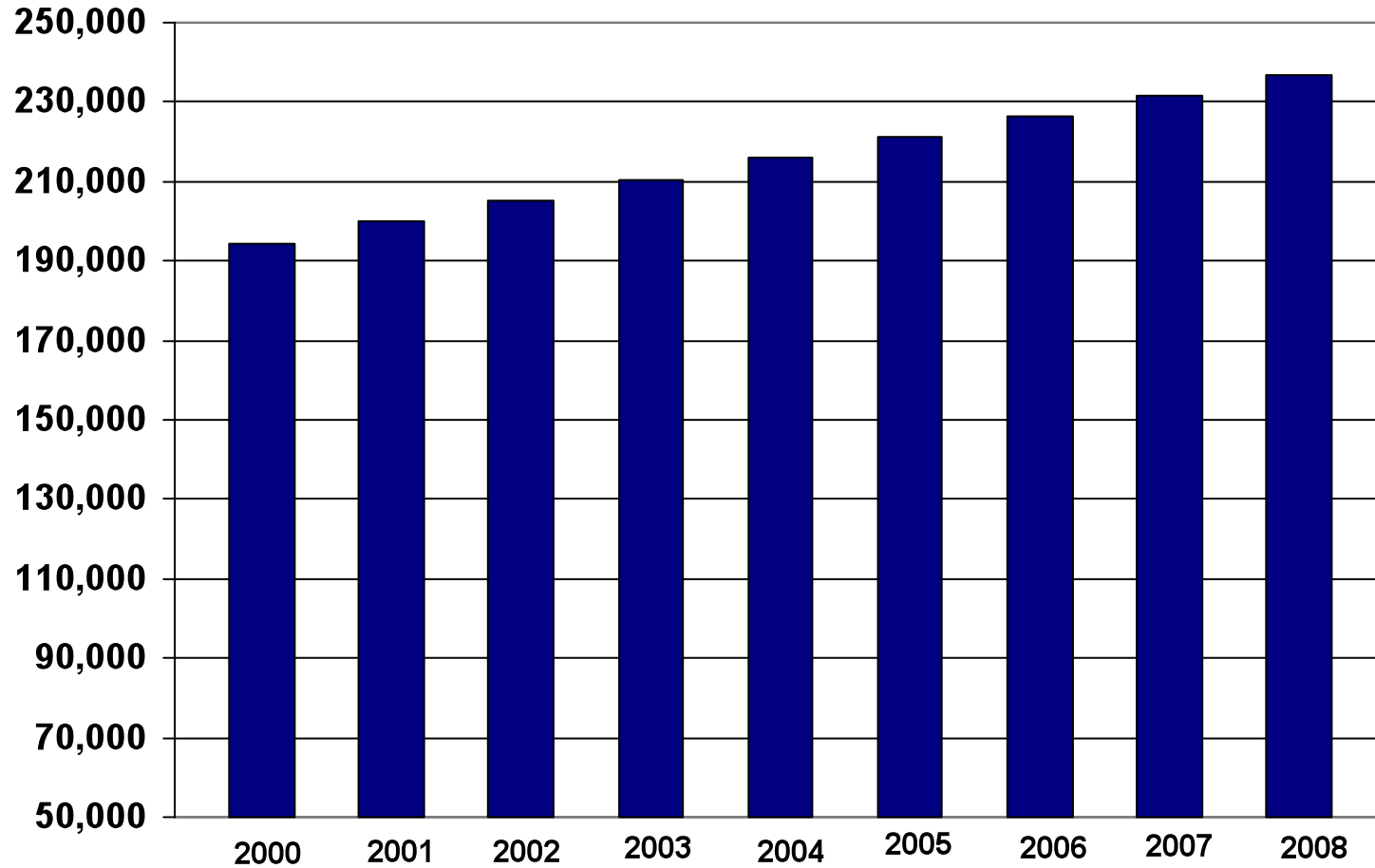


# Laredo MSA Gross Sales



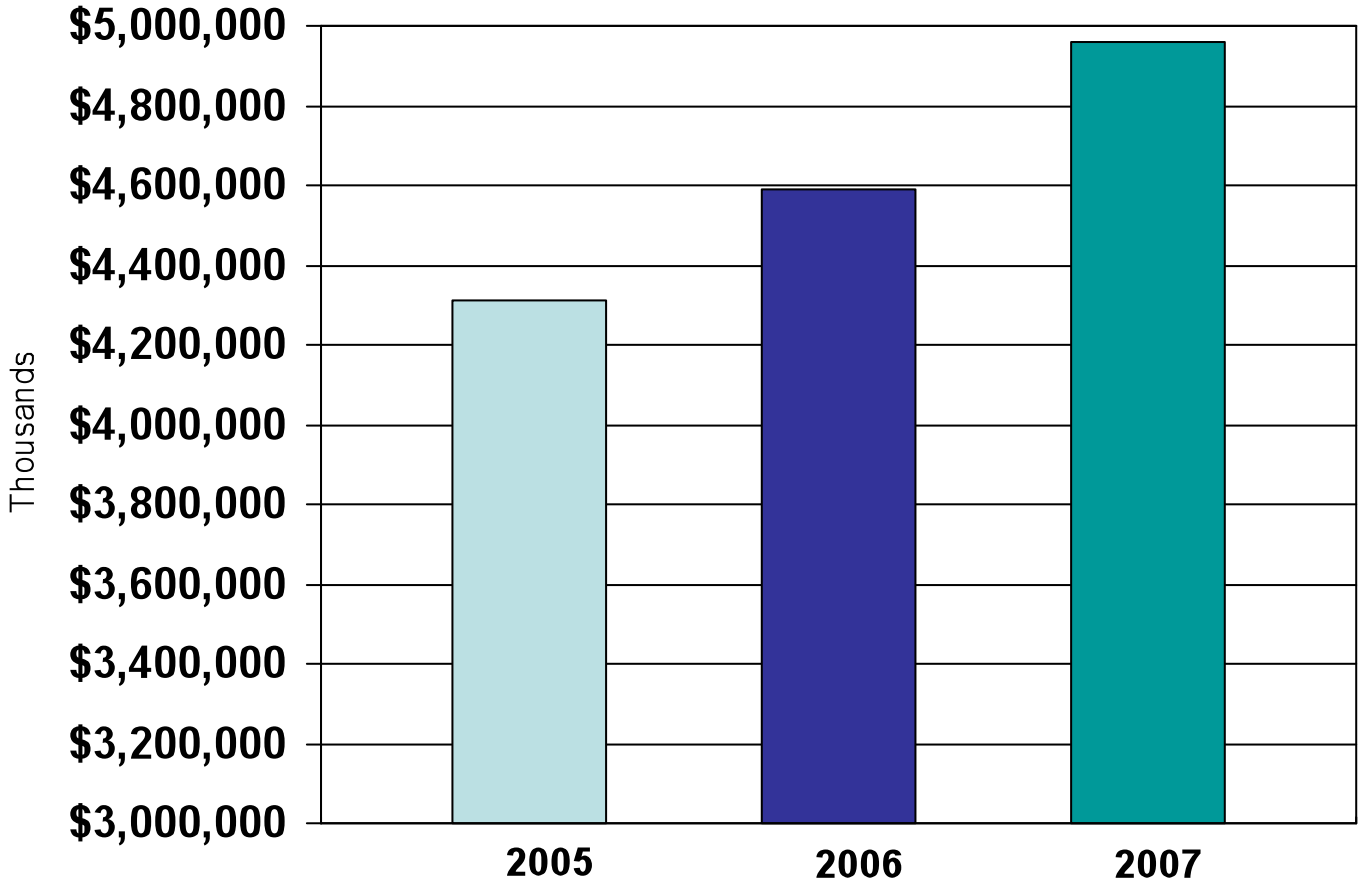
Source: Texas State Comptroller

# Webb County Population



Source: U.S. Census Population Estimates

# Laredo MSA Personal Income

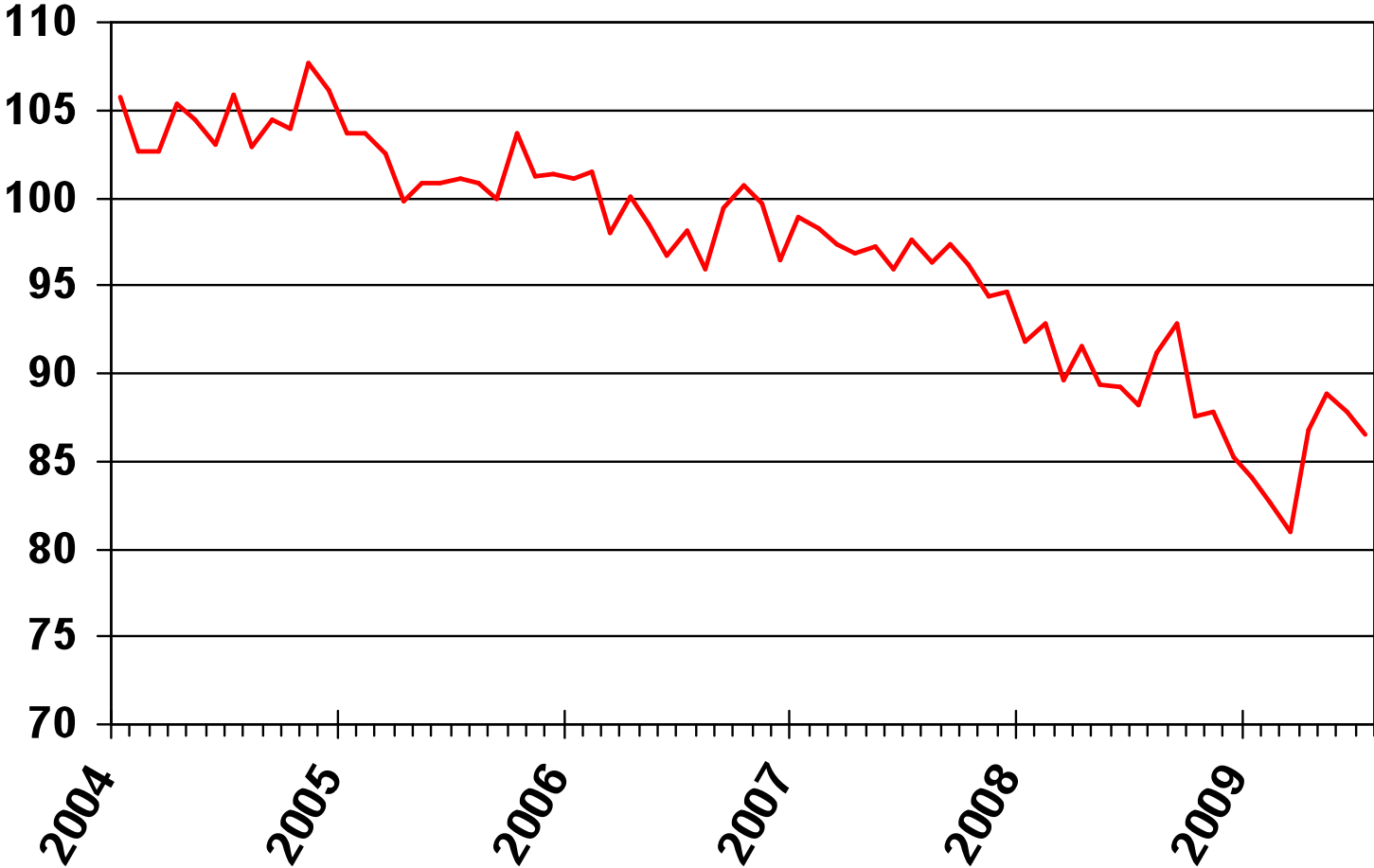


-Percentage change from 2005-2006 is 6.5%  
-Percentage change from 2006-2007 is 8.1%

Source: <http://www.bea.gov/regional/reis/>

# Small Business Optimism Index

Based on Ten Survey Indicators  
(Seasonally Adjusted)



Source: NFIB Small Business Economic Trends, August 2009

# Most Important Reason for Expansion Outlook

Reason Percent by Expansion Outlook  
July 2009

Reason	Good Time	Not Good Time	Uncertain
<b>Economic Conditions</b>	<b>2</b>	<b>55</b>	<b>11</b>
<b>Sales Prospects</b>	<b>1</b>	<b>5</b>	<b>1</b>
<b>Fin. &amp; Interest Rates</b>	<b>1</b>	<b>2</b>	<b>1</b>
<b>Cost of Expansion</b>	<b>0</b>	<b>2</b>	<b>1</b>
<b>Political Climate</b>	<b>0</b>	<b>11</b>	<b>2</b>
<b>Other/Not Available</b>	<b>1</b>	<b>2</b>	<b>1</b>

# Outlook for General Business Conditions

Net Percent ("Better" Minus "Worse") Six Months From Now  
(Seasonally Adjusted)

	Jan	Feb	Mar	Apr	May	Jun	Jul	Aug	Sep	Oct	Nov	Dec
2004	41	33	22	34	29	26	37	32	36	30	47	
2005	25	20	16	5	5	16	12	7	3	14	11	37
2006	6	3	-5	-3	-10	-8	-6	-8	2	11	11	12
2007	-1	-2	-7	-8	-3	-5	-1	0	2	-2	-10	-4
2008	-22	-9	-23	-12	-12	-19	-17	4	14	-4	-2	-13
2009	-12	-21	-22	2	12	7	-3					

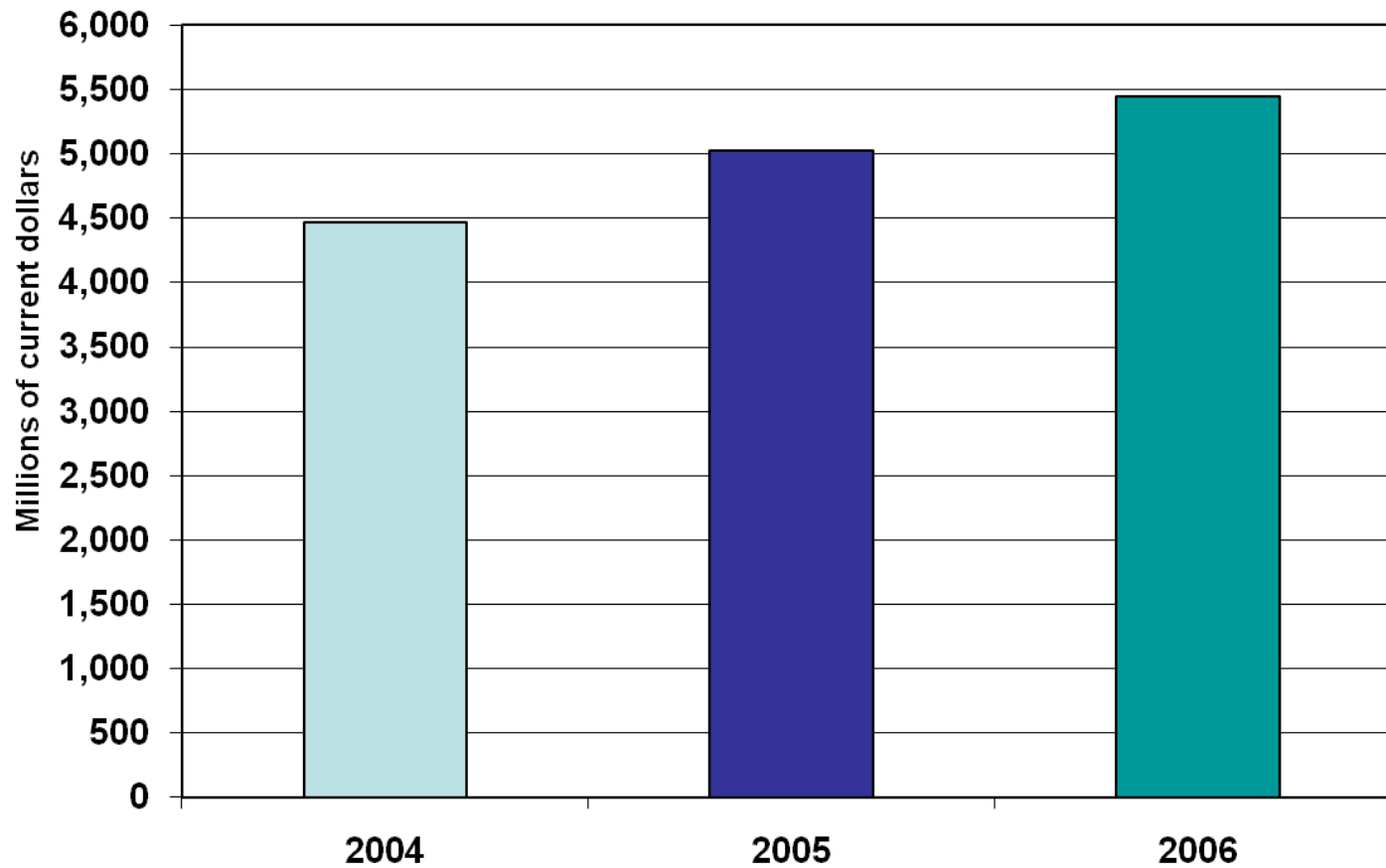
# Single Most Important Problem

July 2009

Problem	Current	One Year Ago	Survey High	Survey Low
Taxes	22	17	32	8
Inflation	3	20	41	0
Poor Sales	32	16	33	2
Fin. & Interest Rates	4	3	37	2
Cost of Labor	4	5	9	2
Govt. Reqs. & Red Tape	12	8	27	4
Comp. From Large Bus.	5	6	14	4
Quality of Labor	4	10	23	3
Cost/Avail. of Insurance	9	11	29	4
Other	5	4	31	2

# Laredo MSA GDP

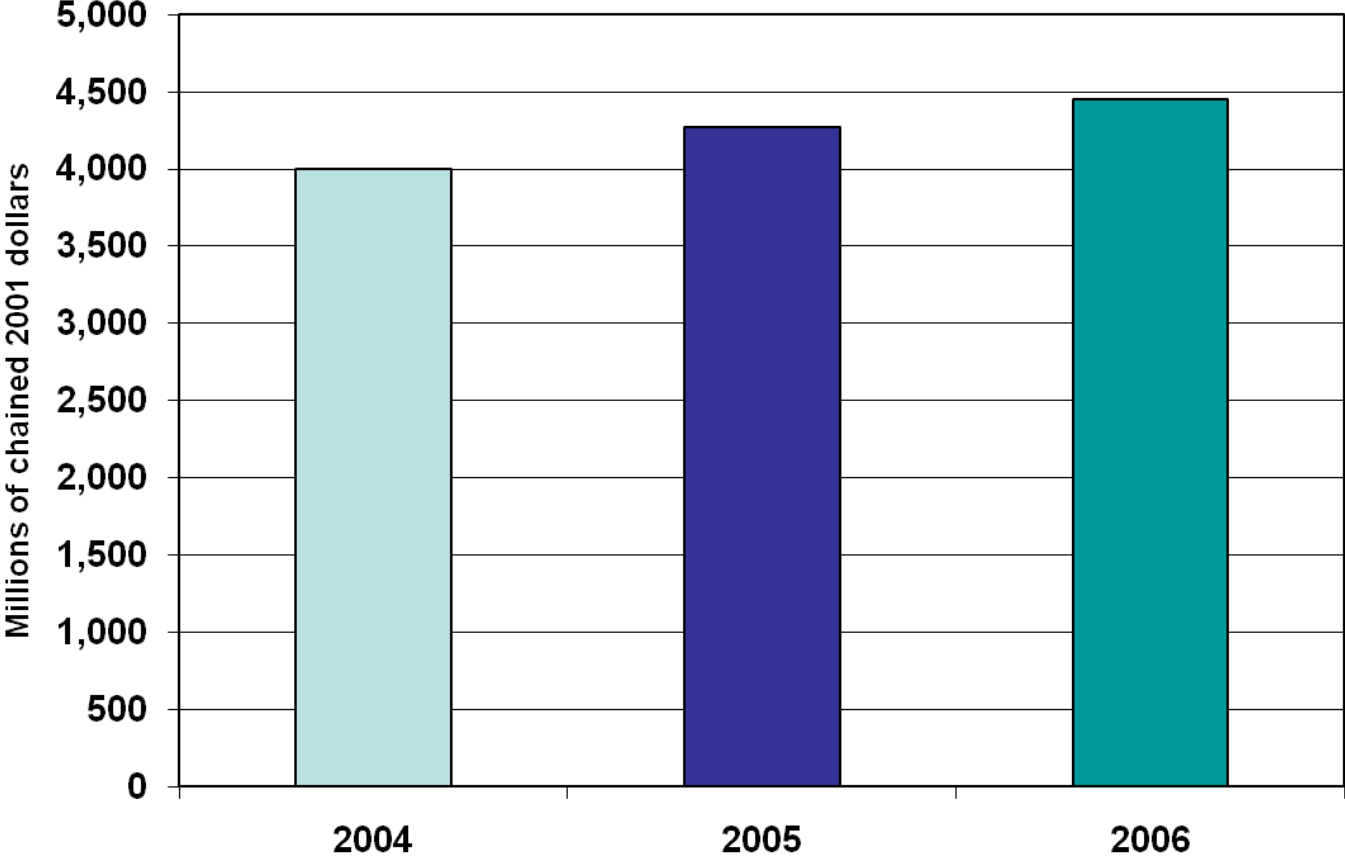
(all industry total)



Source: Bureau of Economic Analysis

# Laredo MSA Real GDP

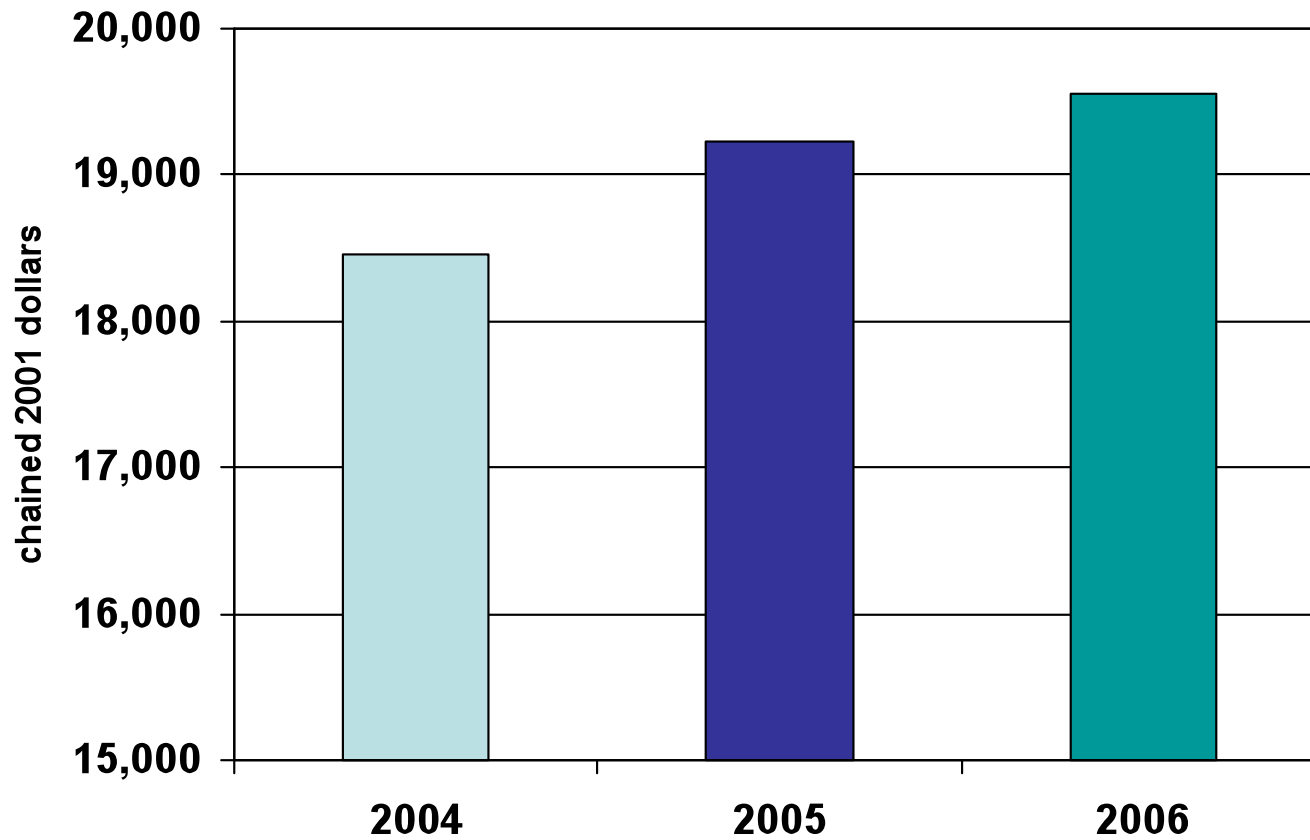
(all industry total)



Source: Bureau of Economic Analysis

# Laredo MSA Per Capita Real GDP

(all industry total)



# Laredo MSA Housing Units

