

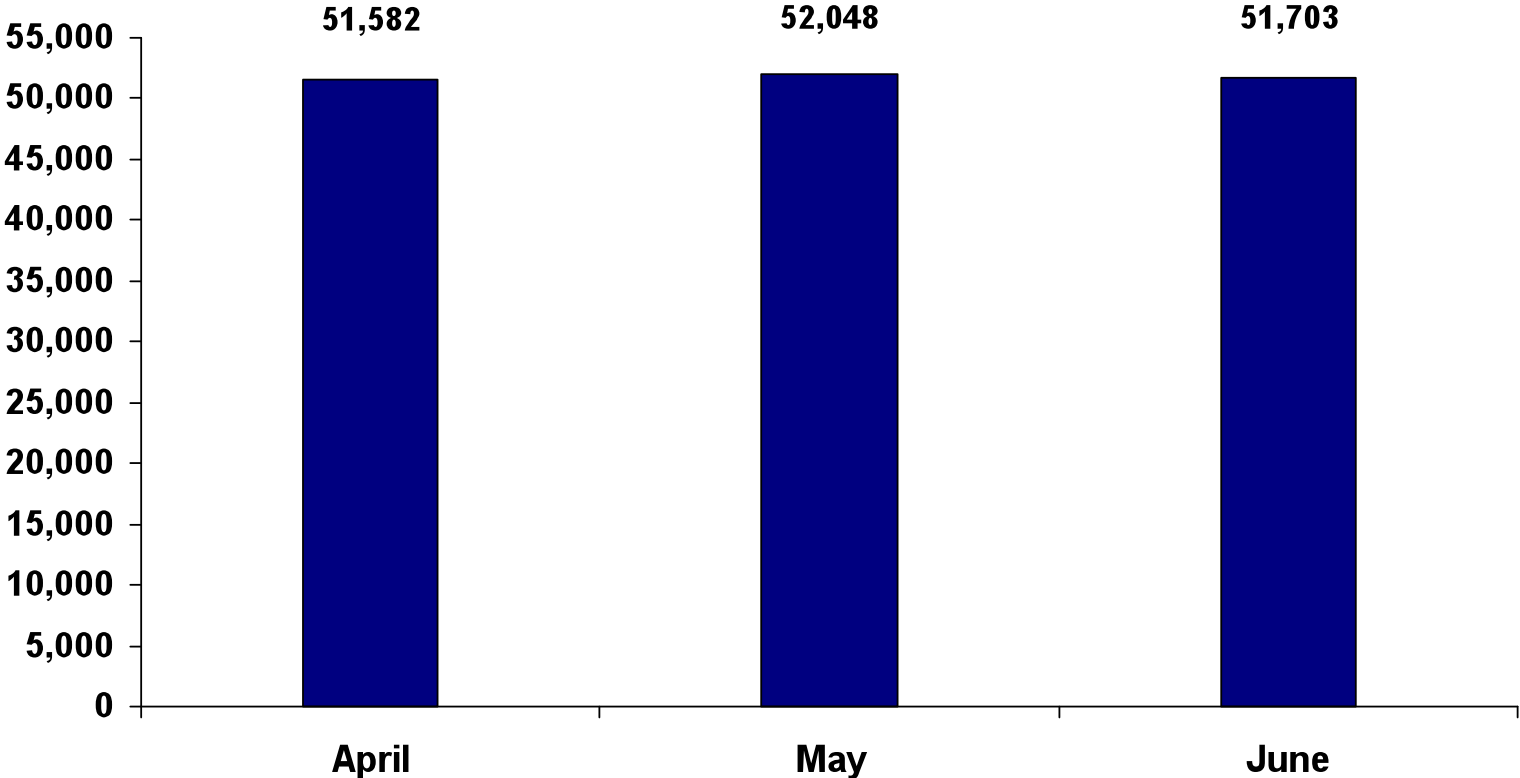
General Area Statistics for Tom Green County

Population ¹	\$108,371
Average annual wage ²	\$31,977
Number in labor force ³	54,526
Number employed ³	51,164
Percent unemployed ³	6.2%
Median household income ⁴	\$43,534
Median housing value ⁴	\$96,900
Median gross rent ⁴	\$609
Per Capita Income ⁴	\$21,340
Poverty rate ⁴	12.5%
High school graduates ⁴	80.8%
Bachelor's degree or higher ⁴	22.4%

Source: ¹U.S. Census Bureau population estimates, July 2009, ²Bureau of Labor Statistics, 2009 preliminary (private sector only),

³Bureau of Labor Statistics, May 2010, ⁴American Community Survey, 2008

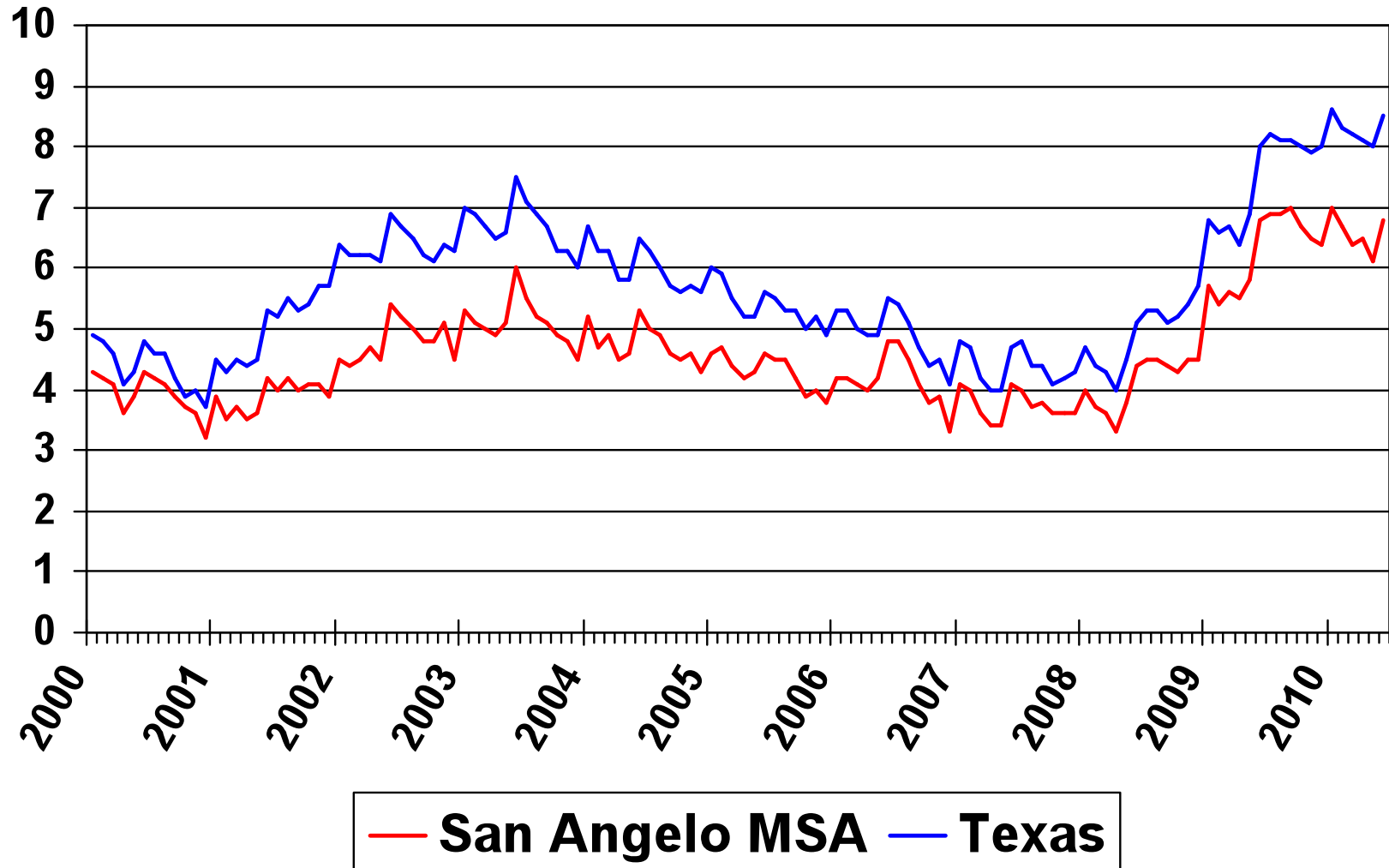
San Angelo MSA Nonfarm Employment Not Seasonally Adjusted



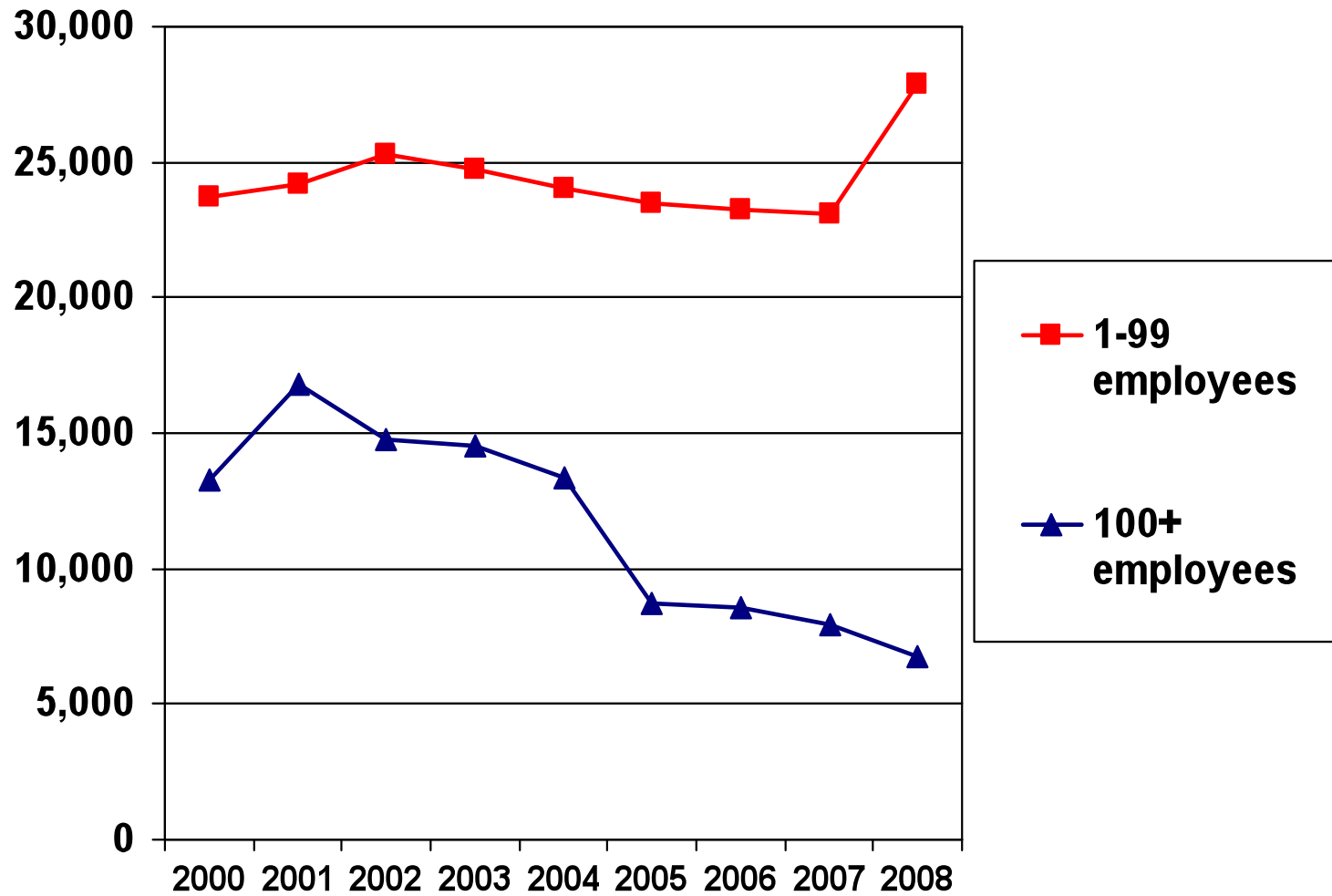
Source: Texas Workforce Commission's Labor Market and Career Information Department

Unemployment Rate

(Not Seasonally Adjusted)

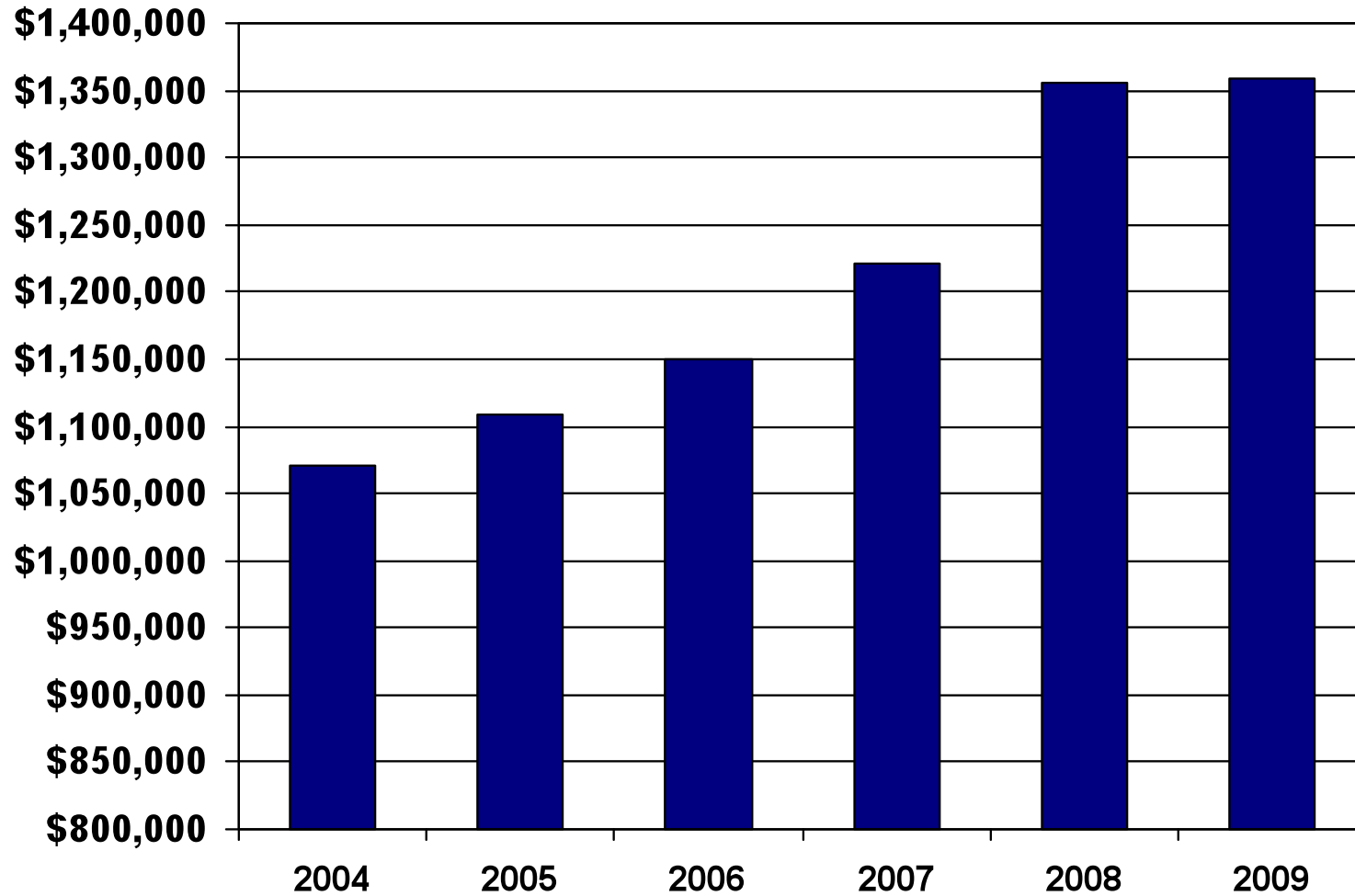


San Angelo MSA Job Growth



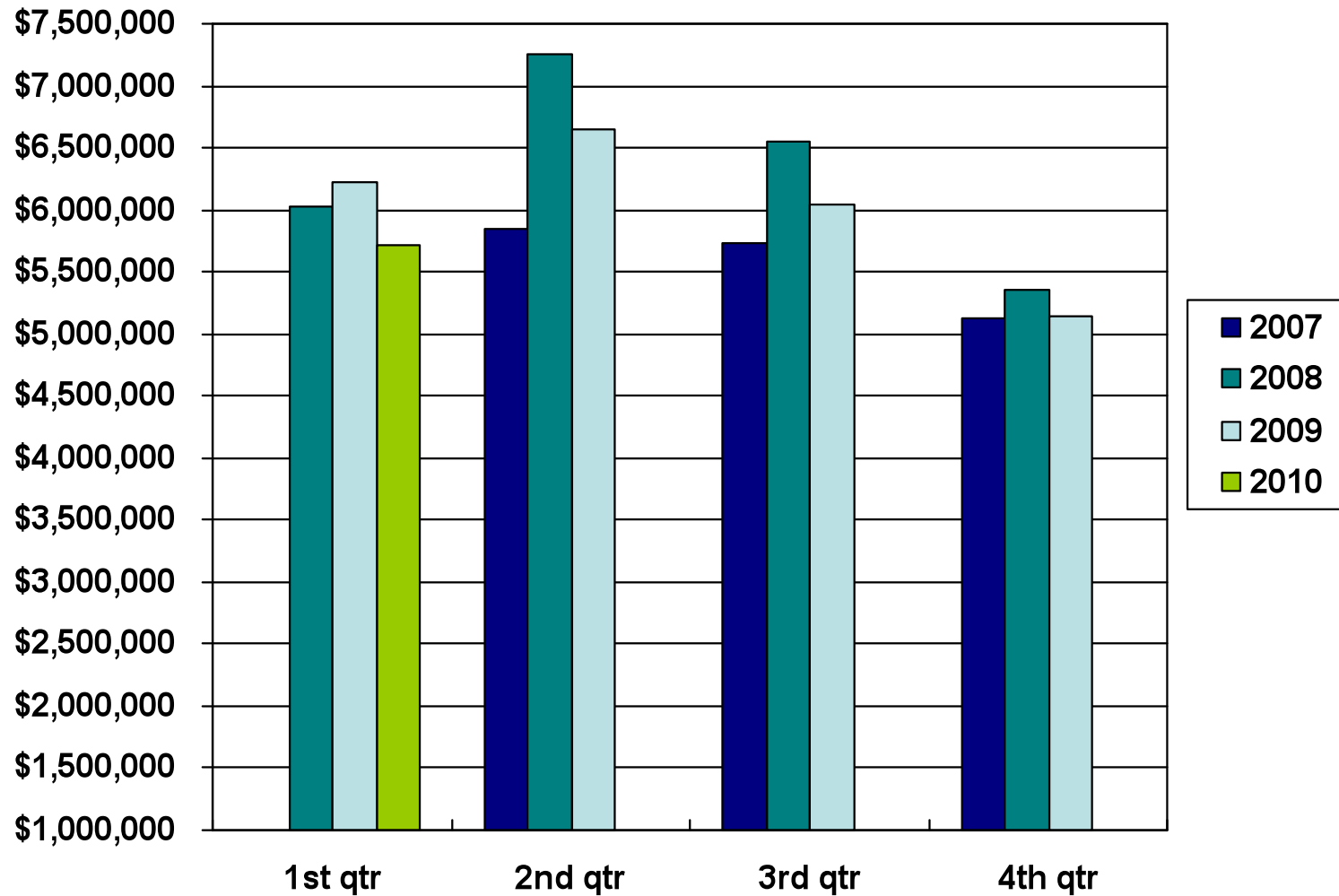
San Angelo City Bank Deposits

(in thousands of dollars)



Source: Federal Deposit Insurance Corporation

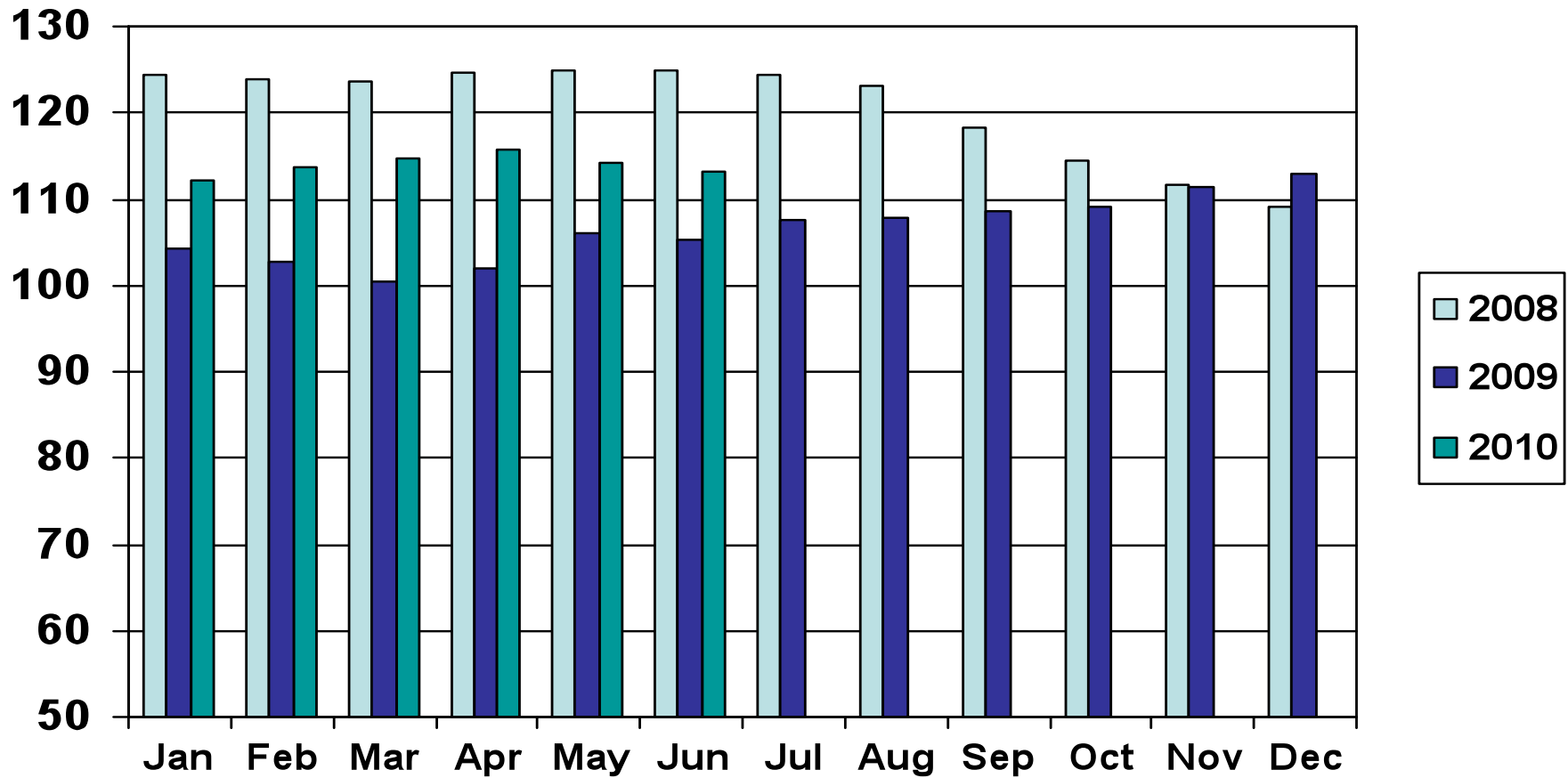
San Angelo City Hotel Receipts



Source: Texas Comptroller of Public Accounts

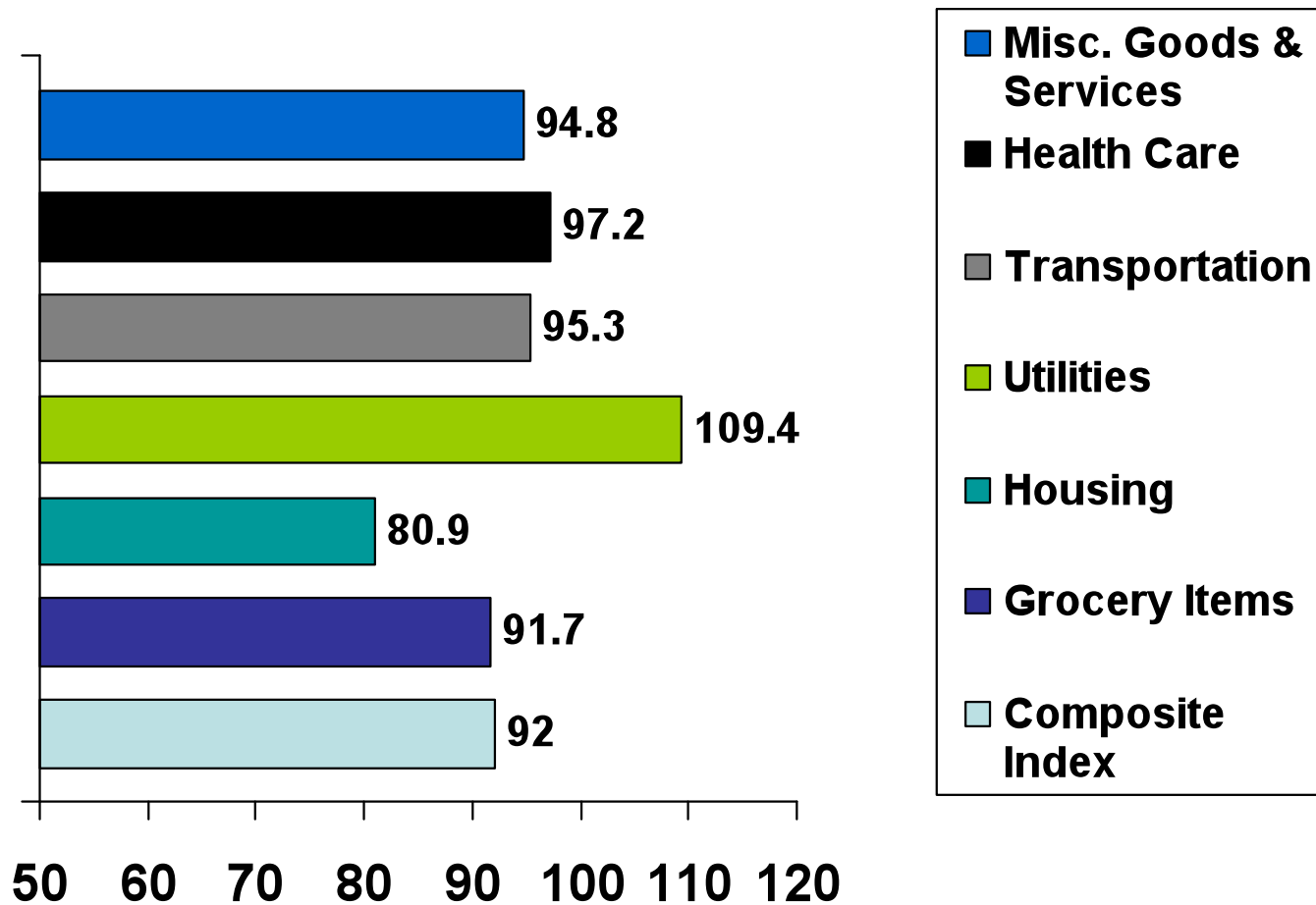
Texas Index of Leading Indicators

Seasonally Adjusted



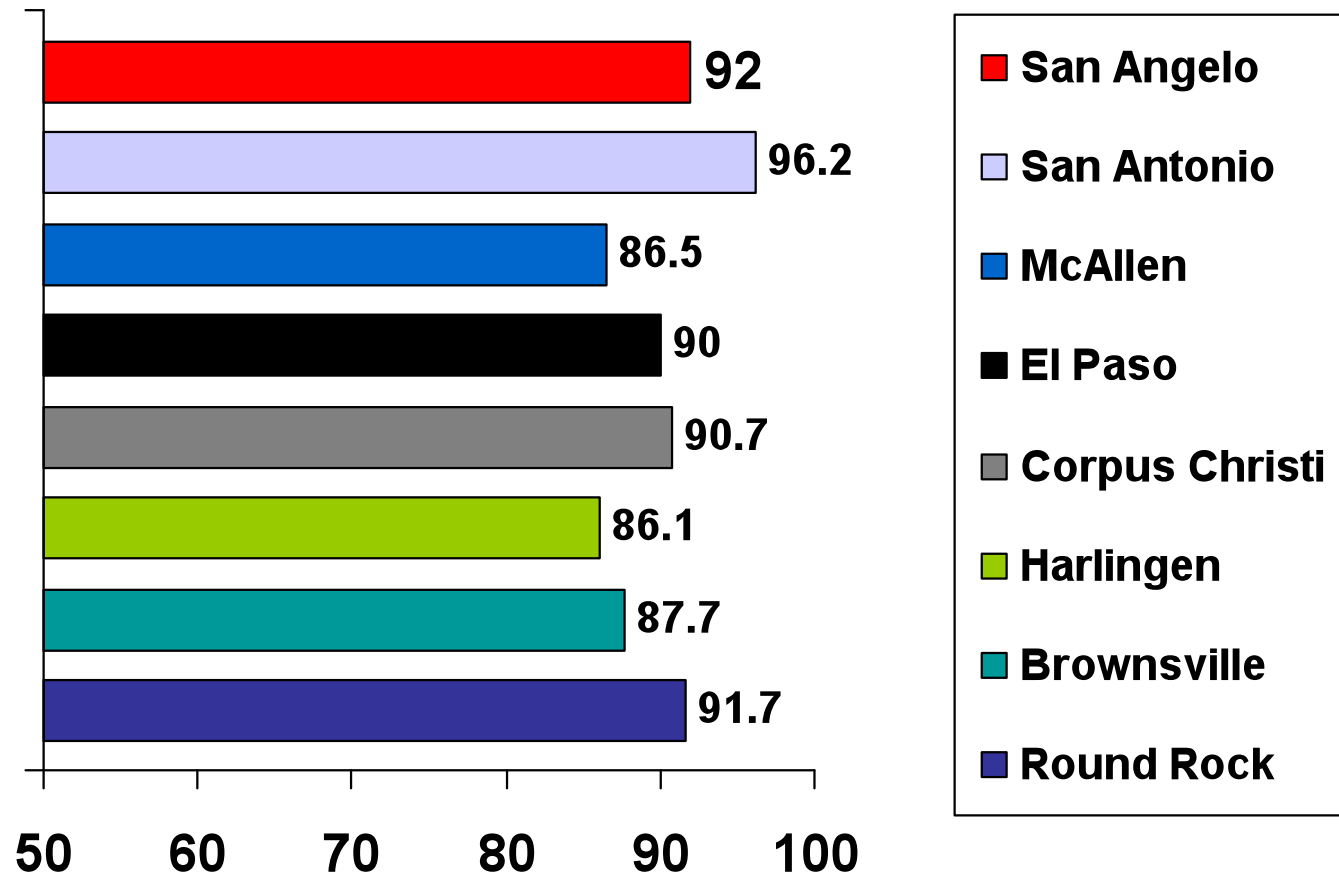
San Angelo Cost of Living Index

2010 First Quarter

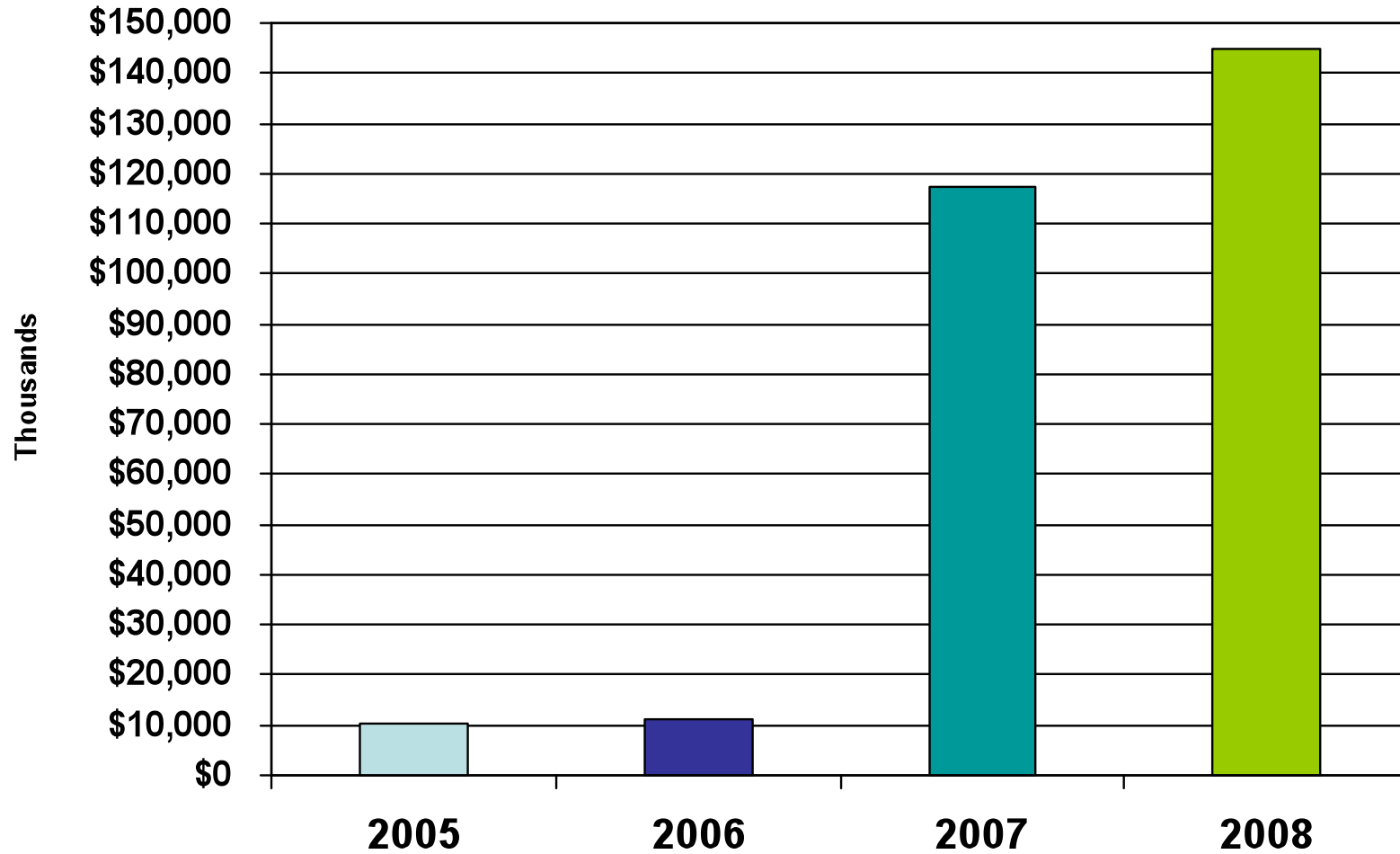


Cost of Living Composite Index

2010 First Quarter

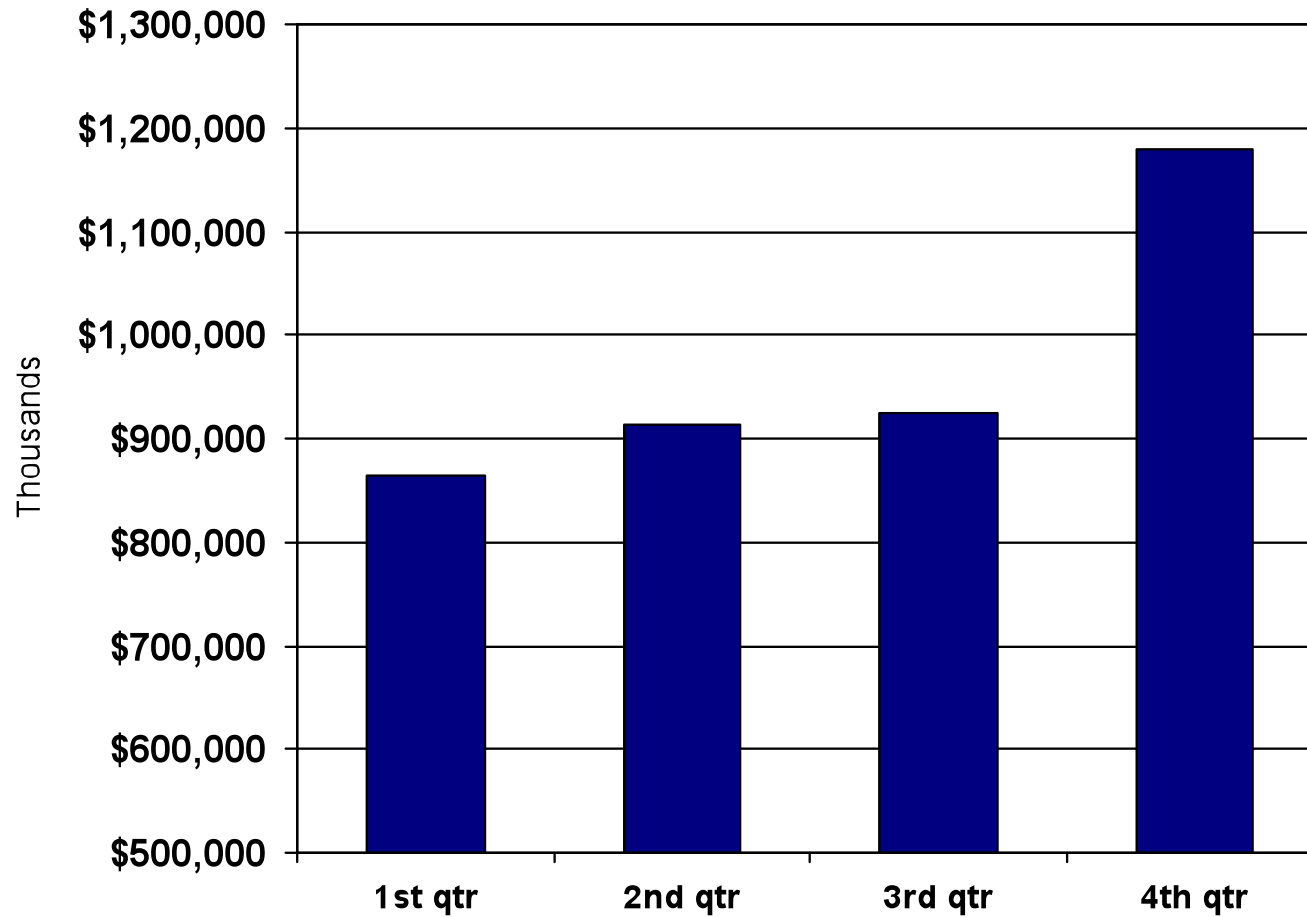


San Angelo MSA Exports



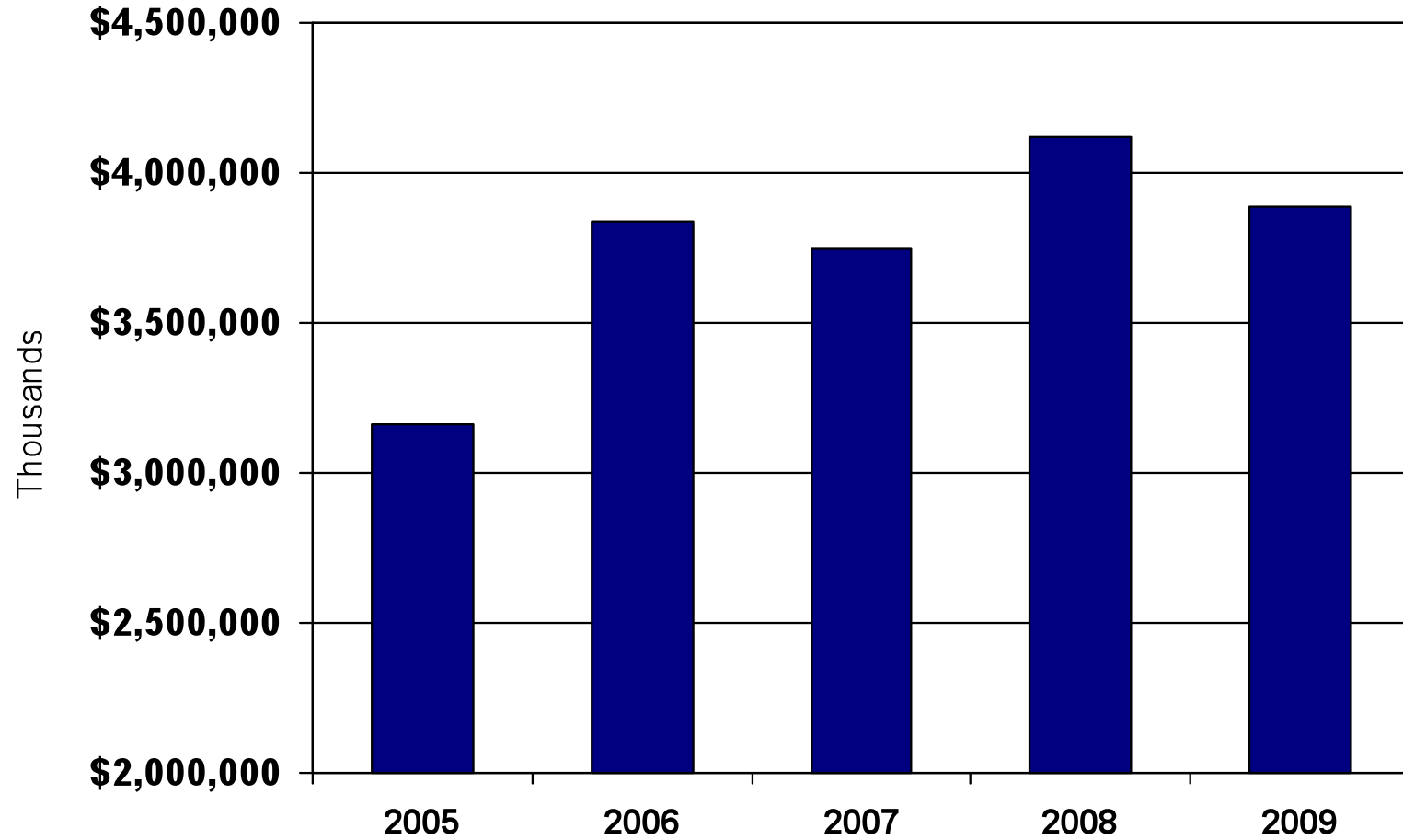
Source: U.S. Department of Commerce International Trade Administration

San Angelo MSA 2009 Gross Sales

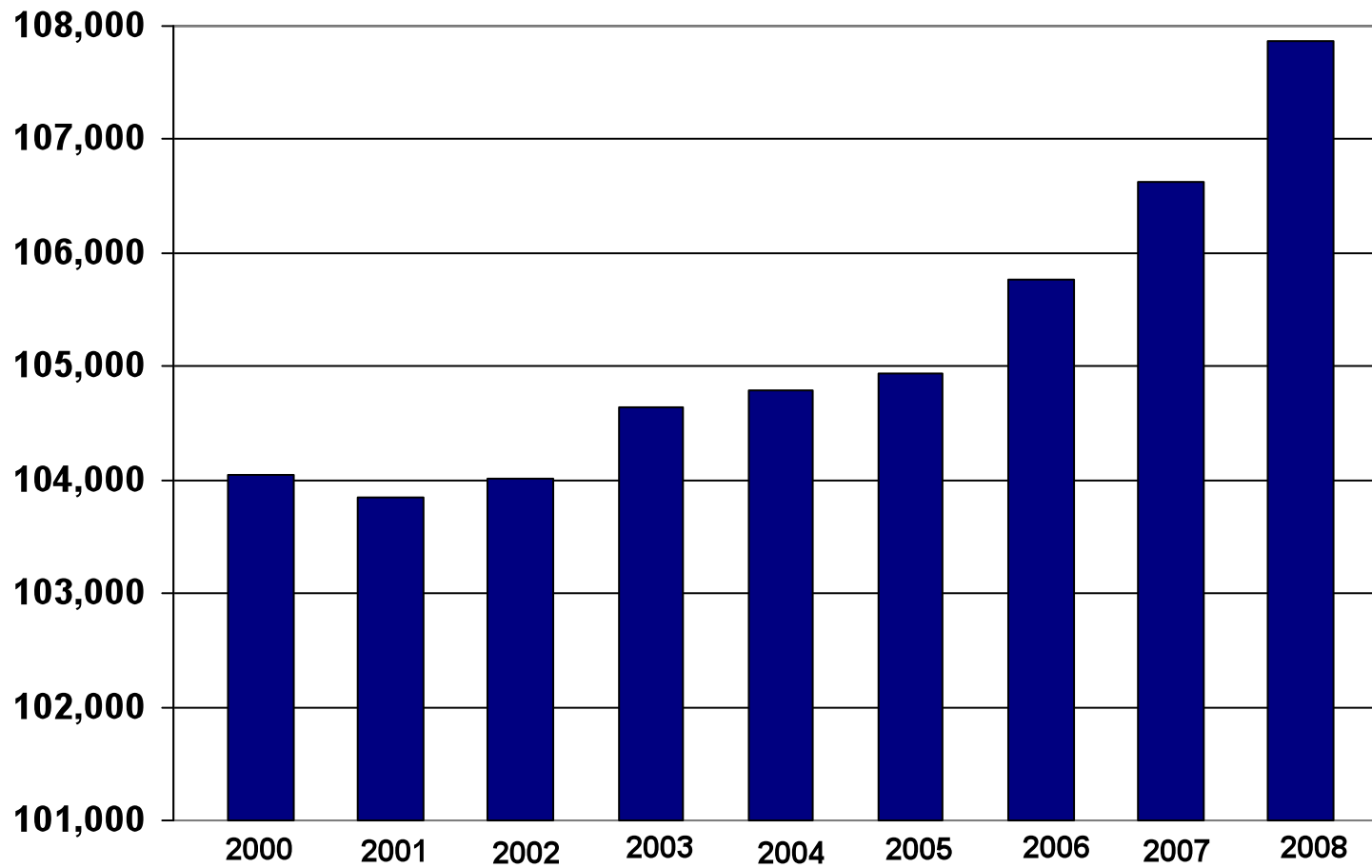


Source: Texas State Comptroller

San Angelo MSA Gross Sales

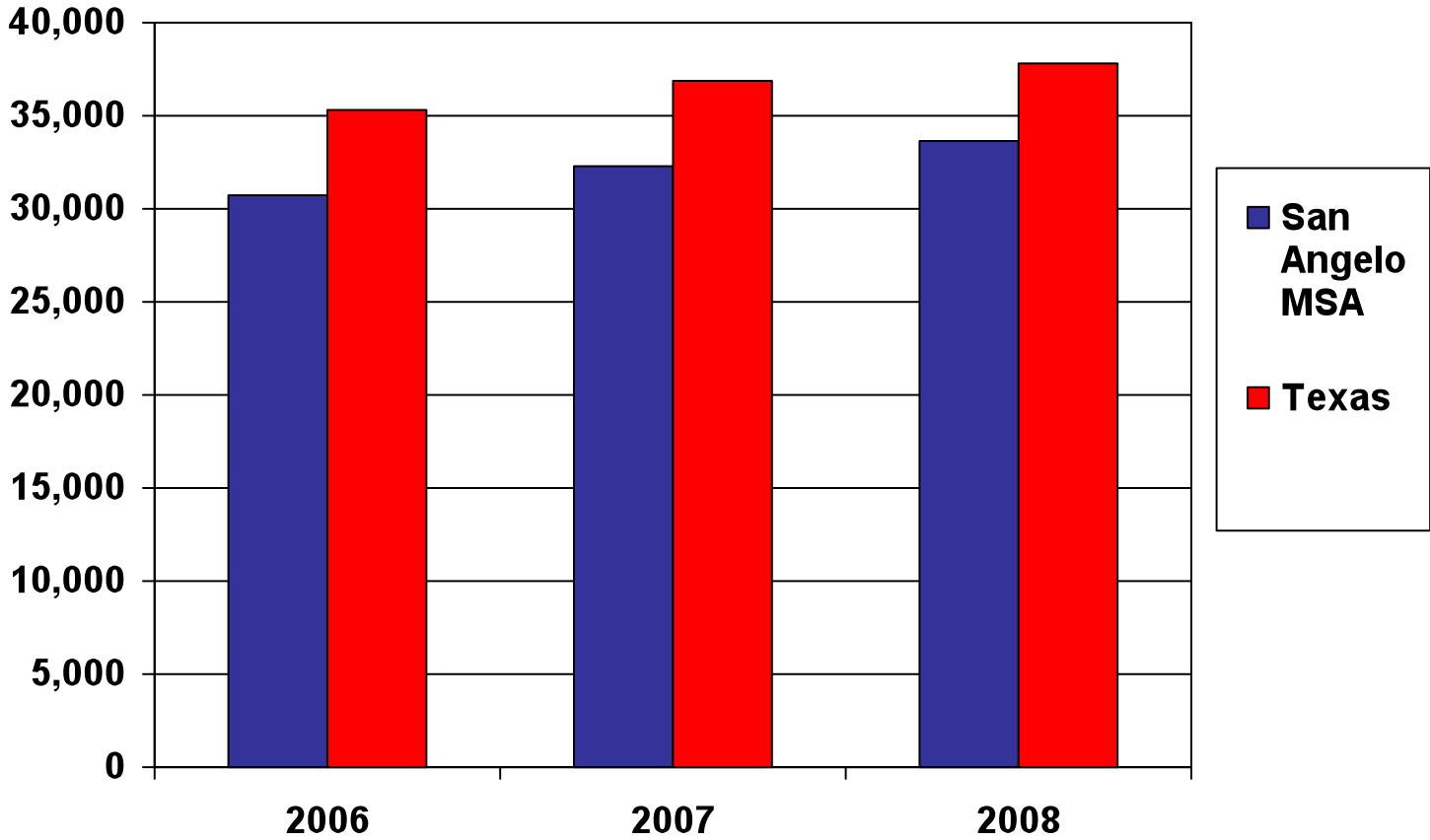


Tom Green County Population



Source: U.S. Census Population Estimates

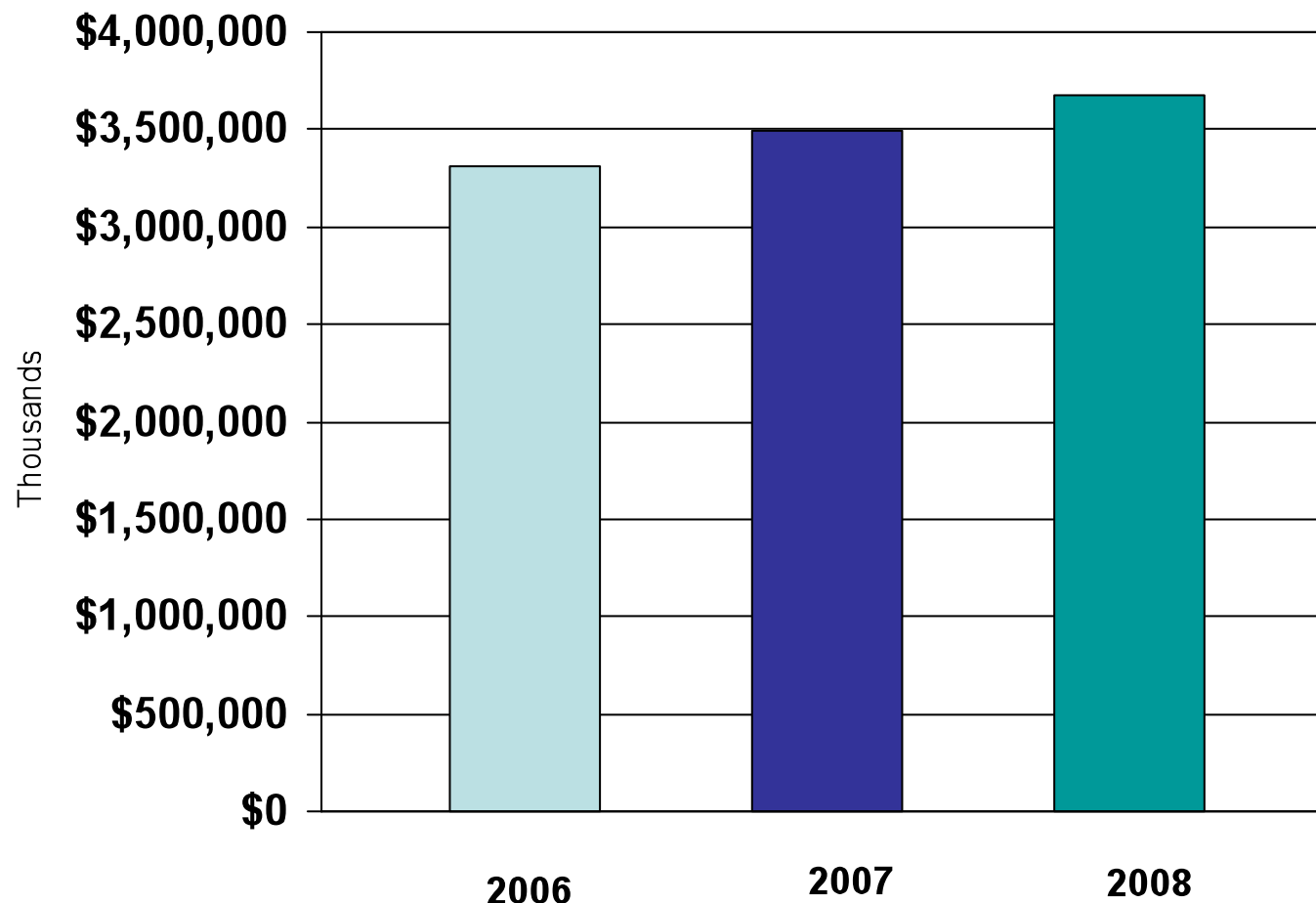
San Angelo MSA Per Capita Personal Income



- San Angelo MSA percentage change from 2006-2007 is 5.0%.
- San Angelo MSA percentage change from 2007-2008 is 4.3%.

Source: Bureau of Economic Analysis <http://www.bea.gov/regional/reis/>

San Angelo MSA Personal Income

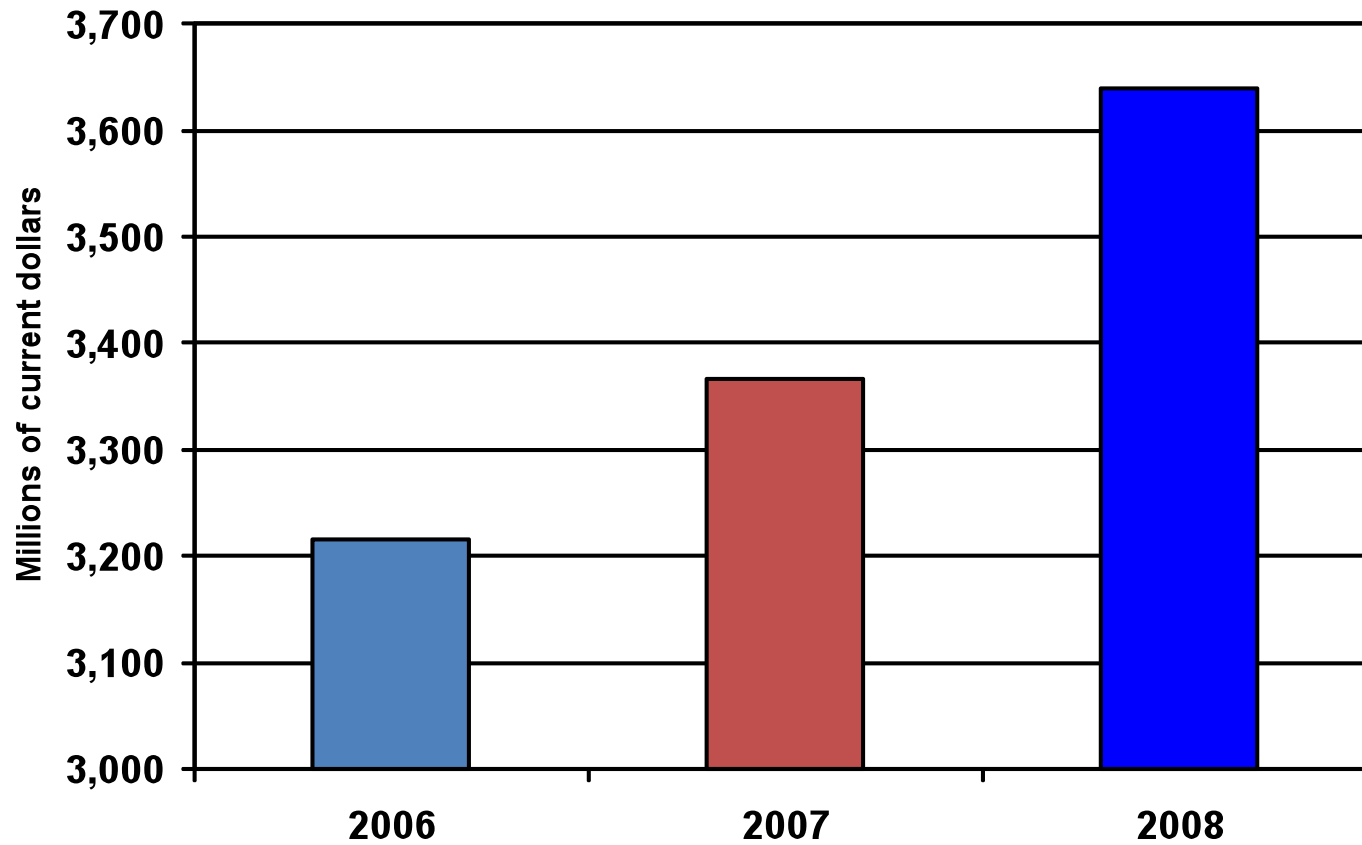


-Percentage change from 2006-2007 is 5.5%

-Percentage change from 2007-2008 is 5.1%

San Angelo MSA GDP

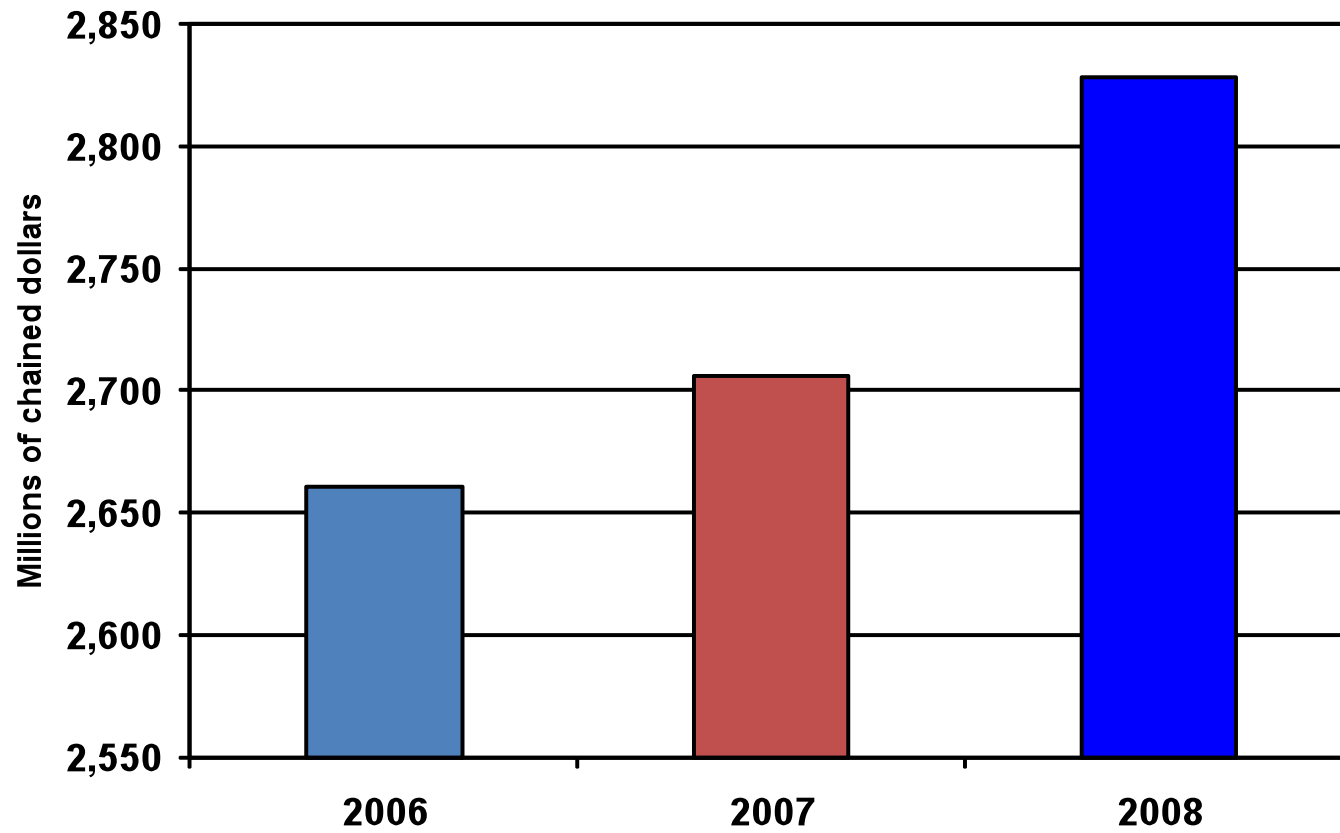
(all industry total)



Source: Bureau of Economic Analysis

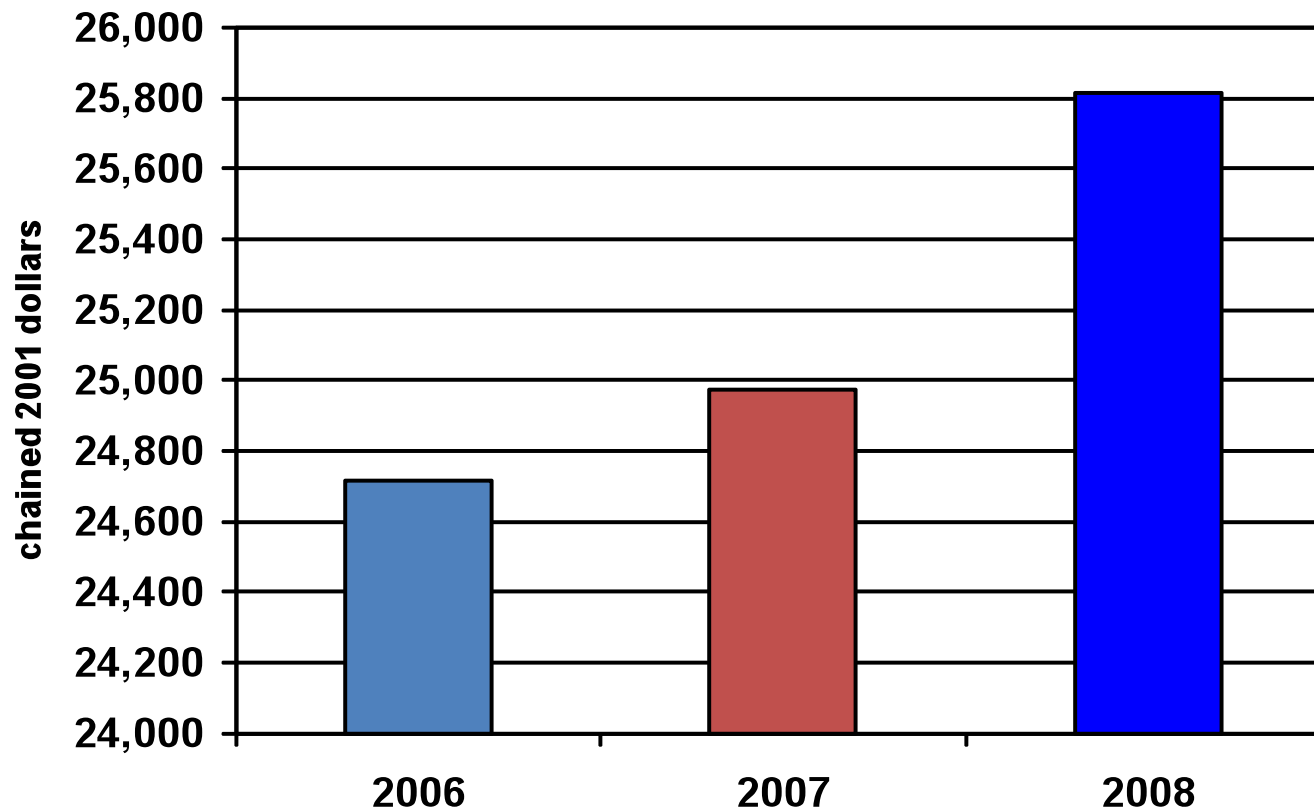
San Angelo MSA Real GDP

(all industry total)

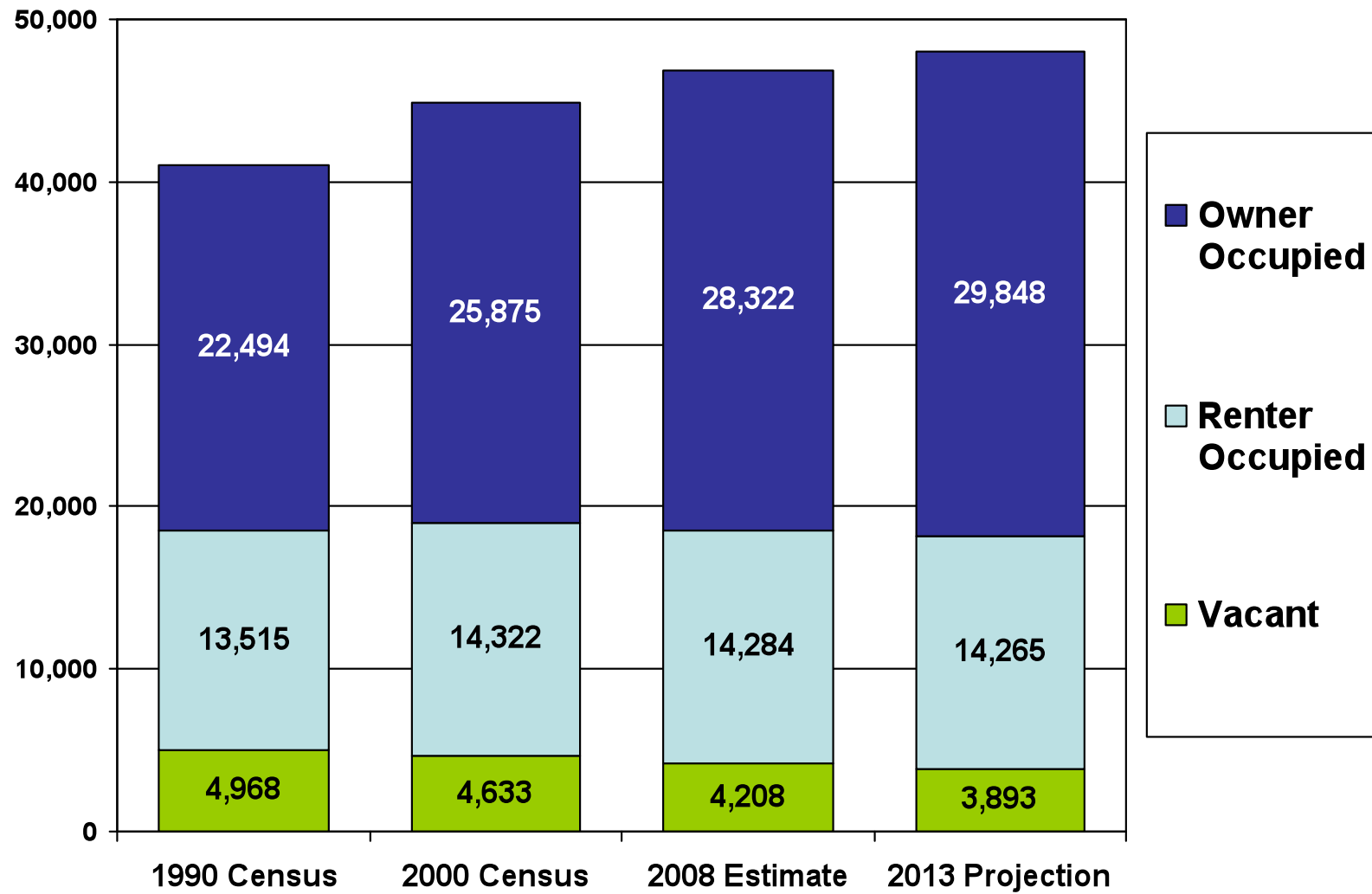


Source: Bureau of Economic Analysis

San Angelo MSA Per Capita Real GDP (all industry total)



San Angelo MSA Housing Units



Source: SBDC National Information Clearinghouse